

1 Q. Please state the intended minimum separation distance between the 3 HVDC
2 cables.

3

4

5 A. The intended minimum separation between HVdc cables is 50 m. The minimum
6 separation is intended to enable repairs to be undertaken on one of the cables
7 without interfering with an adjacent cable.

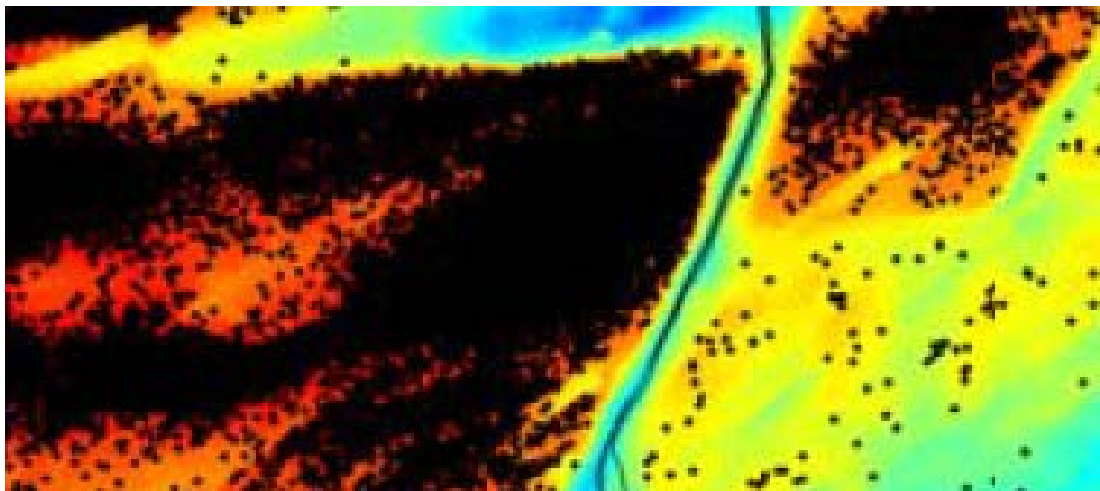
8

9 Maximizing cable placement depth is the most significant protection strategy used
10 for the SOBI crossing. If greater horizontal separation were given priority, then
11 areas exist where the cable would be relocated to shallower water with an
12 increased risk for iceberg damage.

13

14 Referring to Section 6 of Attachment 1 to the response to PUB-NLH-581, C-CORE
15 completed a simulation spanning 140,000 years to assess the risk of damage to the
16 cables from icebergs in the Strait of Belle Isle. In the following extract from Figure 4
17 of that report presented below, iceberg groundings are shown as black dots.

18



1 Although the cables are in close proximity through the deeper water in the corridor,
2 they are shielded from iceberg scour. Relocating in the corridor to provide greater
3 horizontal separation would expose them to greater potential for damage, as the
4 adjacent areas are shallower. The C-CORE model predicts a higher probability of
5 grounding in these areas, and thus a greater potential for cable damage.