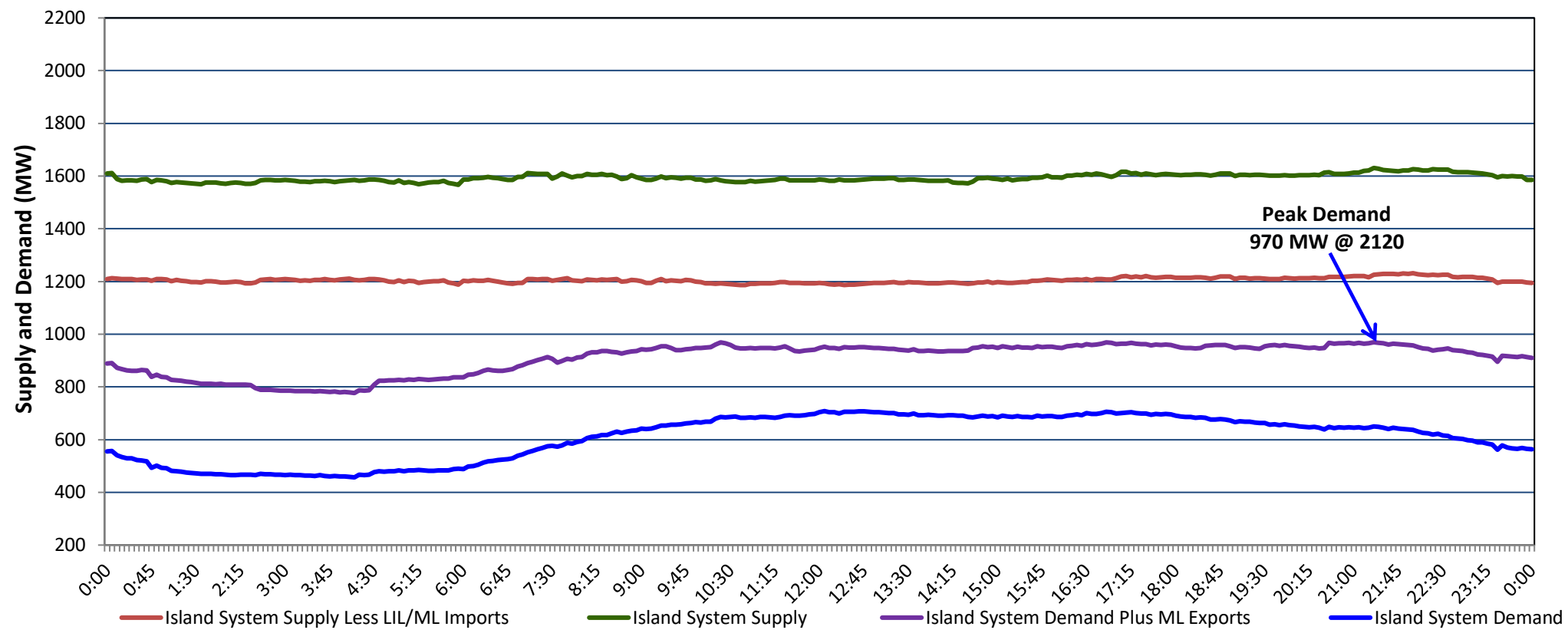


**Newfoundland Labrador Hydro (NLH)
Supply and Demand Status Report Filed Monday, July 31, 2023**

**Section 1
Island Interconnected System Supply, Demand & Exports
Actual 24 Hour System Performance For Friday, July 28, 2023**



Supply Notes For July 28, 2023

- A As of 0701 hours, March 06, 2023, Upper Salmon Unit unavailable (84 MW).
- B As of 0800 hours, May 21, 2023, Holyrood Unit 2 unavailable due to planned outage (170 MW).
- C As of 0903 hours, June 29, 2023, St. Anthony Diesel Plant available at 8.85 MW (9.7 MW).
- D As of 0856 hours, July 01, 2023, Holyrood Unit 3 available but not operating (150 MW).
- E As of 0800 hours, July 09, 2023, Holyrood Unit 1 unavailable due to planned outage (170 MW).
- F As of 0938 hours, July 09, 2023, Cat Arm Unit 1 unavailable due to planned outage (67 MW).
- G As of 2059 hours, July 13, 2023, Stephenville Gas Turbine unavailable (50 MW).
- H As of 0714 hours, July 25, 2023, Hardwoods Gas Turbine unavailable due to planned outage (50 MW).
- I As of 2238 hours, July 25, 2023, Bay d'Espoir Unit 6 unavailable (76.5 MW).

**Section 2
Island Interconnected Supply and Demand**

| Sat, Jul 29, 2023 | Island System Outlook ³ | | Seven-Day Forecast | Temperature (°C) | | Island System Daily Peak Demand (MW) | |
|--|------------------------------------|--------|---------------------------|------------------|---------|--------------------------------------|-----------------------|
| | | | | Morning | Evening | Forecast | Adjusted ⁷ |
| Available Island System Supply: ⁵ | 1,585 | MW | Saturday, July 29, 2023 | 18 | 20 | 1,025 | 1,025 |
| NLH Island Generation: ^{4,8} | 875 | MW | Sunday, July 30, 2023 | 17 | 14 | 995 | 995 |
| NLH Island Power Purchases: ⁶ | 105 | MW | Monday, July 31, 2023 | 14 | 16 | 995 | 995 |
| Other Island Generation: | 210 | MW | Tuesday, August 1, 2023 | 15 | 12 | 765 | 765 |
| ML/LIL Imports: | 395 | MW | Wednesday, August 2, 2023 | 13 | 11 | 765 | 765 |
| Current St. John's Temperature & Windchill: | 18 °C | N/A °C | Thursday, August 3, 2023 | 16 | 16 | 755 | 755 |
| 7-Day Island Peak Demand Forecast: | 1,025 | MW | Friday, August 4, 2023 | 17 | 16 | 750 | 750 |

Supply Notes For July 29, 2023

- Notes:
1. Generation outages for running and corrective maintenance are included. These are not unusual for power system operations. They generally do not impact customer supply. The power system operators schedule outages to system equipment whenever possible to coincide with periods when customer demands are low and sufficient supply reserves are available. However, from time to time equipment outages are necessary and reserves may be impacted.
 2. Due to the Island system having no synchronous connections to the larger North American grid, when there is a sudden loss of large generating units there may be a requirement for some customer's load to be interrupted for short periods to bring generation output equal to customer demand. This automatic action of power system protection, referred to as under frequency load shedding (UFLS), is necessary to ensure the integrity and reliability of system equipment. Under frequency events have typically occurred 5 to 8 times per year on the Island Interconnected System and the resultant customer load interruptions are generally less than 30 minutes. With the activation of the Maritime Link frequency controller during the winter of 2018, UFLS events have occurred less frequently.
 3. As of 0800 Hours.
 4. Gross output including station service at Holyrood (24.5 MW) and improved NLH hydraulic output due to water levels (35 MW).
 5. Gross output from all Island sources (including Note 4).
 6. NLH Island Power Purchases include: CBPP Co-Gen, Nalcor Exploits, Rattle Brook, Star Lake, Wind Generation and capacity assistance (when applicable).
 7. Adjusted for curtailable load, market activities and the impact of voltage reduction when applicable.
 8. Due to limitations inherent in the design of combustion turbines, the output of combustion turbines may be reduced in the event that ambient temperatures exceed the threshold

**Section 3
Island Peak Demand Information
Previous Day Actual Peak and Current Day Forecast Peak**

| | | | |
|-------------------|--|-------|----------|
| Fri, Jul 28, 2023 | Actual Island Peak Demand ⁹ | 21:20 | 970 MW |
| Sat, Jul 29, 2023 | Forecast Island Peak Demand | | 1,025 MW |

Notes: 9. Island Demand / LIL / ML Exports (where applicable) is supplied by NLH generation and purchases, plus generation owned and operated by Newfoundland Power and Corner Brook Pulp & Paper (Deer Lake Power, DLP).