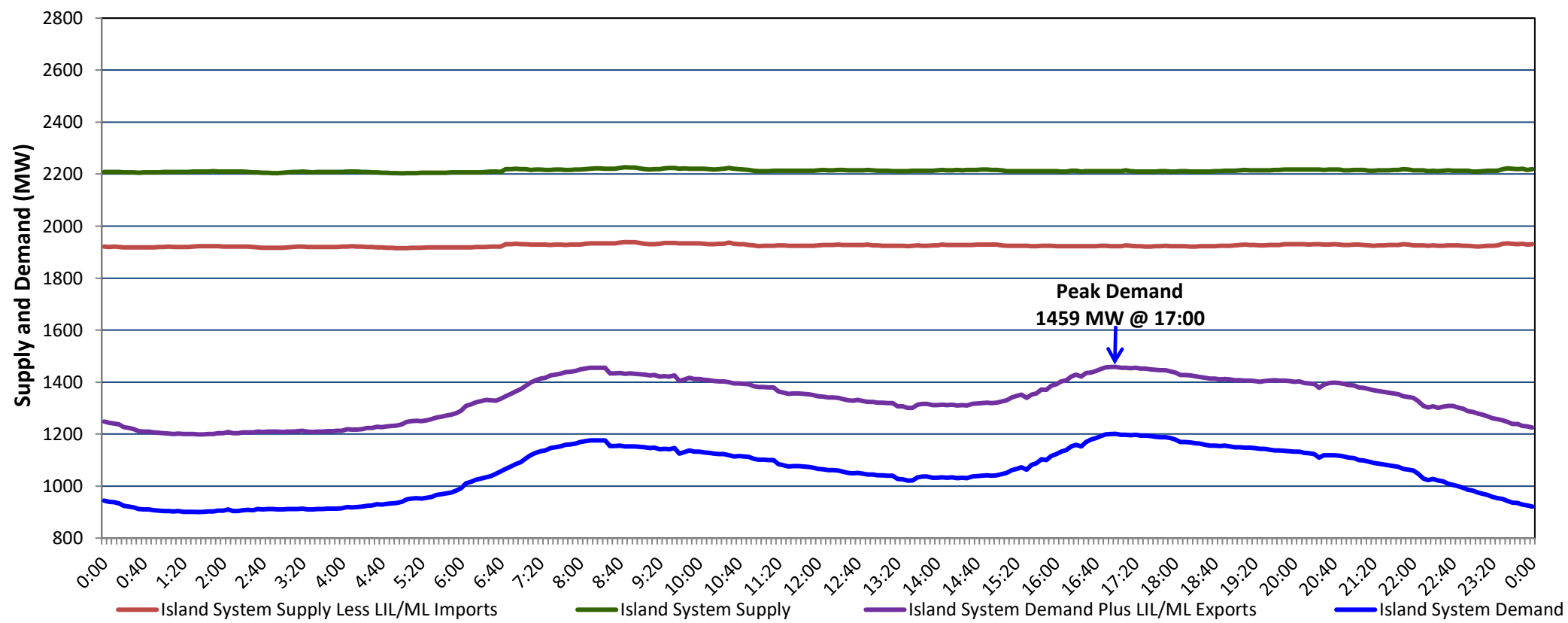


**Newfoundland Labrador Hydro (NLH)
Supply and Demand Status Report Filed Thursday, December 08, 2022**

**Section 1
Island Interconnected System Supply, Demand & Exports
Actual 24 Hour System Performance For Wednesday, December 07, 2022**



Supply Notes For December 07, 2022

A As of 0144 hours, November 24, 2022, Holyrood Unit 1 available at 80 MW (170 MW).

B At 1000 hours, December 07, 2022, St. Anthony Diesel Plant available at full capacity (9.7 MW).

**Section 2
Island Interconnected Supply and Demand**

Thu, Dec 08, 2022	Island System Outlook ³			Seven-Day Forecast	Temperature (°C)		Island System Daily Peak Demand (MW)	
					Morning	Evening	Forecast	Adjusted ⁷
Available Island System Supply: ⁵	1,935	MW		Thursday, December 8, 2022	2	2	1,235	1,141
NLH Island Generation: ^{4,8}	1,605	MW		Friday, December 9, 2022	3	3	1,210	1,116
NLH Island Power Purchases: ⁶	125	MW		Saturday, December 10, 2022	2	1	1,315	1,220
Other Island Generation:	205	MW		Sunday, December 11, 2022	-1	-2	1,380	1,284
ML/LIL Imports:	-	MW		Monday, December 12, 2022	-4	-4	1,395	1,299
Current St. John's Temperature & Windchill:	2 °C	N/A	°C	Tuesday, December 13, 2022	-4	2	1,375	1,279
7-Day Island Peak Demand Forecast:	1,395	MW		Wednesday, December 14, 2022	3	2	1,290	1,195

Supply Notes For December 08, 2022

- Notes:
1. Generation outages for running and corrective maintenance are included. These are not unusual for power system operations. They generally do not impact customer supply. The power system operators schedule outages to system equipment whenever possible to coincide with periods when customer demands are low and sufficient supply reserves are available. However, from time to time equipment outages are necessary and reserves may be impacted.
 2. Due to the Island system having no synchronous connections to the larger North American grid, when there is a sudden loss of large generating units there may be a requirement for some customer's load to be interrupted for short periods to bring generation output equal to customer demand. This automatic action of power system protection, referred to as under frequency load shedding (UFLS), is necessary to ensure the integrity and reliability of system equipment. Under frequency events have typically occurred 5 to 8 times per year on the Island Interconnected System and the resultant customer load interruptions are generally less than 30 minutes. With the activation of the Maritime Link frequency controller during the winter of 2018, UFLS events have occurred less frequently.
 3. As of 0800 Hours.
 4. Gross output including station service at Holyrood (24.5 MW) and improved NLH hydraulic output due to water levels (35 MW).
 5. Gross output from all Island sources (including Note 4).
 6. NLH Island Power Purchases include: CBPP Co-Gen, Nalcor Exploits, Rattle Brook, Star Lake, Wind Generation and capacity assistance (when applicable).
 7. Adjusted for curtailable load, market activities and the impact of voltage reduction when applicable.
 8. Due to limitations inherent in the design of combustion turbines, the output of combustion turbines may be reduced in the event that ambient temperatures exceed the threshold

**Section 3
Island Peak Demand Information
Previous Day Actual Peak and Current Day Forecast Peak**

Wed, Dec 07, 2022	Actual Island Peak Demand ⁹	17:00	1,459 MW
Thu, Dec 08, 2022	Forecast Island Peak Demand		1,235 MW

Notes: 9. Island Demand / LIL / ML Exports (where applicable) is supplied by NLH generation and purchases, plus generation owned and operated by Newfoundland Power and Corner Brook Pulp & Paper (Deer Lake Power, DLP).