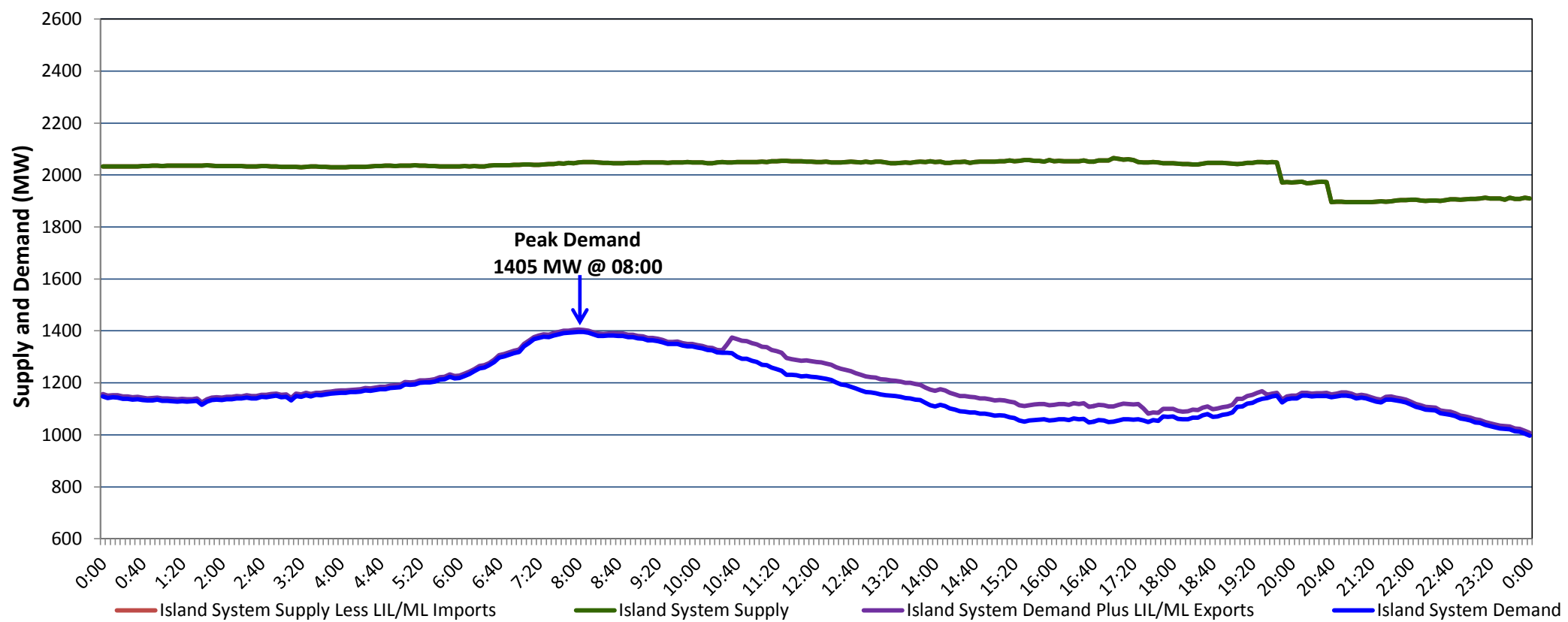


Newfoundland Labrador Hydro (NLH) Supply and Demand Status Report Filed Friday, March 18, 2022

Section 1 Island Interconnected System Supply, Demand & Exports Actual 24 Hour System Performance For Thursday, March 17, 2022



Supply Notes For March 17, 2022

1,2

- A As of 1715 hours, January 21, 2022, Holyrood Unit 2 available at 150 MW (170 MW).
 B At 1948 hours, March 17, 2022, Bay d'Espoir Unit 4 unavailable due to planned outage (76.5 MW).
 C At 2038 hours, March 17, 2022, Bay d'Espoir Unit 3 unavailable due to planned outage (76.5 MW).

Section 2 Island Interconnected Supply and Demand

| Fri, Mar 18, 2022 | Island System Outlook ³ | | Seven-Day Forecast | | Temperature (°C) | | Island System Daily Peak Demand (MW) | |
|--|------------------------------------|-----|--------------------------|---------------------------|------------------|---------|--------------------------------------|-----------------------|
| | | | | | Morning | Evening | Forecast | Adjusted ⁷ |
| Available Island System Supply: ⁵ | 1,910 | MW | Friday, March 18, 2022 | | 2 | 5 | 1,235 | 1,133 |
| NLH Island Generation: ^{4,8} | 1,520 | MW | Saturday, March 19, 2022 | | -2 | -4 | 1,245 | 1,143 |
| NLH Island Power Purchases: ⁶ | 165 | MW | Sunday, March 20, 2022 | | -5 | -3 | 1,310 | 1,207 |
| Other Island Generation: | 225 | MW | Monday, March 21, 2022 | | 2 | 4 | 1,200 | 1,098 |
| ML/LIL Imports: | - | MW | Tuesday, March 22, 2022 | | -1 | -3 | 1,290 | 1,187 |
| Current St. John's Temperature & Windchill: | 3 °C | N/A | °C | Wednesday, March 23, 2022 | -2 | -2 | 1,310 | 1,207 |
| 7-Day Island Peak Demand Forecast: | 1,360 | MW | Thursday, March 24, 2022 | | -3 | -1 | 1,360 | 1,256 |

Supply Notes For March 18, 2022

3

- Notes:
1. Generation outages for running and corrective maintenance are included. These are not unusual for power system operations. They generally do not impact customer supply. The power system operators schedule outages to system equipment whenever possible to coincide with periods when customer demands are low and sufficient supply reserves are available. However, from time to time equipment outages are necessary and reserves may be impacted.
 2. Due to the Island system having no synchronous connections to the larger North American grid, when there is a sudden loss of large generating units there may be a requirement for some customer's load to be interrupted for short periods to bring generation output equal to customer demand. This automatic action of power system protection, referred to as under frequency load shedding (UFLS), is necessary to ensure the integrity and reliability of system equipment. Under frequency events have typically occurred 5 to 8 times per year on the Island Interconnected System and the resultant customer load interruptions are generally less than 30 minutes. With the activation of the Maritime Link frequency controller during the winter of 2018, UFLS events have occurred less frequently.
 3. As of 0800 Hours.
 4. Gross output including station service at Holyrood (24.5 MW) and improved NLH hydraulic output due to water levels (35 MW).
 5. Gross output from all Island sources (including Note 4).
 6. NLH Island Power Purchases include: CBPP Co-Gen, Nalcor Exploits, Rattle Brook, Star Lake, Wind Generation and capacity assistance (when applicable).
 7. Adjusted for curtailable load, market activities and the impact of voltage reduction when applicable.
 8. Due to limitations inherent in the design of combustion turbines, the output of combustion turbines may be reduced in the event that ambient temperatures exceed the threshold

Section 3 Island Peak Demand Information Previous Day Actual Peak and Current Day Forecast Peak

| | | | |
|-------------------|--|------|----------|
| Thu, Mar 17, 2022 | Actual Island Peak Demand ⁹ | 8:00 | 1,405 MW |
| Fri, Mar 18, 2022 | Forecast Island Peak Demand | | 1,235 MW |

- Notes: 9. Island Demand / LIL / ML Exports (where applicable) is supplied by NLH generation and purchases, plus generation owned and operated by Newfoundland Power and Corner Brook Pulp & Paper (Deer Lake Power, DLP).