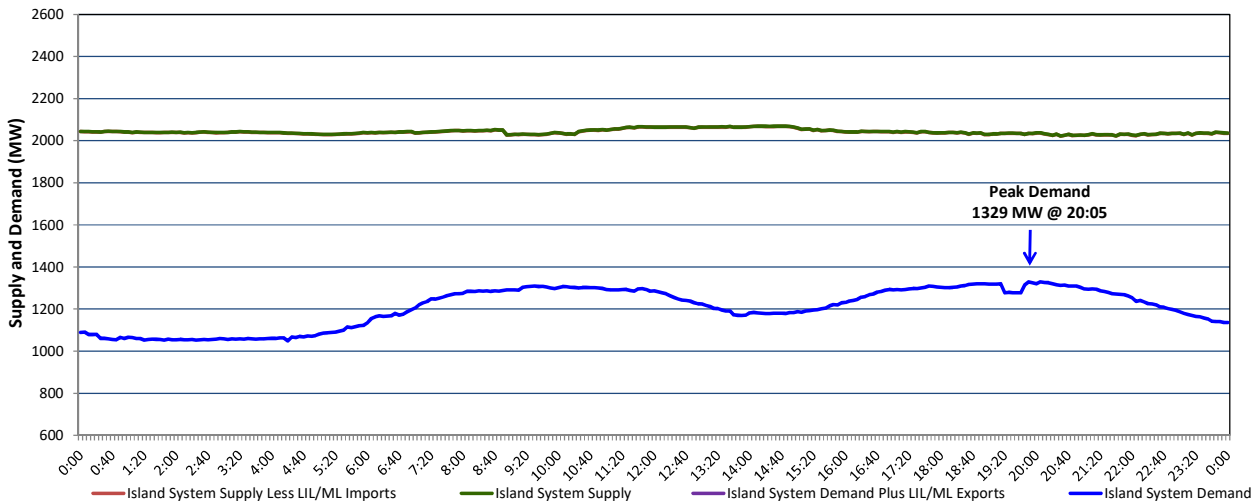


**Newfoundland Labrador Hydro (NLH)
Supply and Demand Status Report Filed Wednesday, March 09, 2022**

**Section 1
Island Interconnected System Supply, Demand & Exports
Actual 24 Hour System Performance For Tuesday, March 08, 2022**



Supply Notes For March 08, 2022

1,2

A As of 1715 hours, January 21, 2022, Holyrood Unit 2 available at 150 MW (170 MW).

**Section 2
Island Interconnected Supply and Demand**

Wed, Mar 09, 2022	Island System Outlook ³			Seven-Day Forecast	Temperature (°C)		Island System Daily Peak Demand (MW)	
					Morning	Evening	Forecast	Adjusted ⁷
Available Island System Supply: ⁵	2,021	MW		Wednesday, March 9, 2022	-3	-8	1,435	1,330
NLH Island Generation: ^{4,8}	1,675	MW		Thursday, March 10, 2022	0	-2	1,435	1,330
NLH Island Power Purchases: ⁶	125	MW		Friday, March 11, 2022	2	-6	1,290	1,187
Other Island Generation:	220	MW		Saturday, March 12, 2022	-3	-3	1,320	1,217
ML/LIL Imports:	1	MW		Sunday, March 13, 2022	8	-5	1,435	1,330
Current St. John's Temperature & Windchill:	-3	-14	°C	Monday, March 14, 2022	-3	-5	1,450	1,345
7-Day Island Peak Demand Forecast:		1,450	MW	Tuesday, March 15, 2022	2	1	1,310	1,207

Supply Notes For March 09, 2022

3

- Notes:
1. Generation outages for running and corrective maintenance are included. These are not unusual for power system operations. They generally do not impact customer supply. The power system operators schedule outages to system equipment whenever possible to coincide with periods when customer demands are low and sufficient supply reserves are available. However, from time to time equipment outages are necessary and reserves may be impacted.
 2. Due to the Island system having no synchronous connections to the larger North American grid, when there is a sudden loss of large generating units there may be a requirement for some customer's load to be interrupted for short periods to bring generation output equal to customer demand. This automatic action of power system protection, referred to as under frequency load shedding (UFLS), is necessary to ensure the integrity and reliability of system equipment. Under frequency events have typically occurred 5 to 8 times per year on the Island Interconnected System and the resultant customer load interruptions are generally less than 30 minutes. With the activation of the Maritime Link frequency controller during the winter of 2018, UFLS events have occurred less frequently.
 3. As of 0800 Hours.
 4. Gross output including station service at Holyrood (24.5 MW) and improved NLH hydraulic output due to water levels (35 MW).
 5. Gross output from all Island sources (including Note 4).
 6. NLH Island Power Purchases include: CBPP Co-Gen, Nalcor Exploits, Rattle Brook, Star Lake, Wind Generation and capacity assistance (when applicable).
 7. Adjusted for curtailable load, market activities and the impact of voltage reduction when applicable.
 8. Due to limitations inherent in the design of combustion turbines, the output of combustion turbines may be reduced in the event that ambient temperatures exceed the threshold

**Section 3
Island Peak Demand Information
Previous Day Actual Peak and Current Day Forecast Peak**

Tue, Mar 08, 2022	Actual Island Peak Demand ⁹	20:05	1,329 MW
Wed, Mar 09, 2022	Forecast Island Peak Demand		1,435 MW

Notes: 9. Island Demand / LIL / ML Exports (where applicable) is supplied by NLH generation and purchases, plus generation owned and operated by Newfoundland Power and Corner Brook Pulp & Paper (Deer Lake Power, DLP).