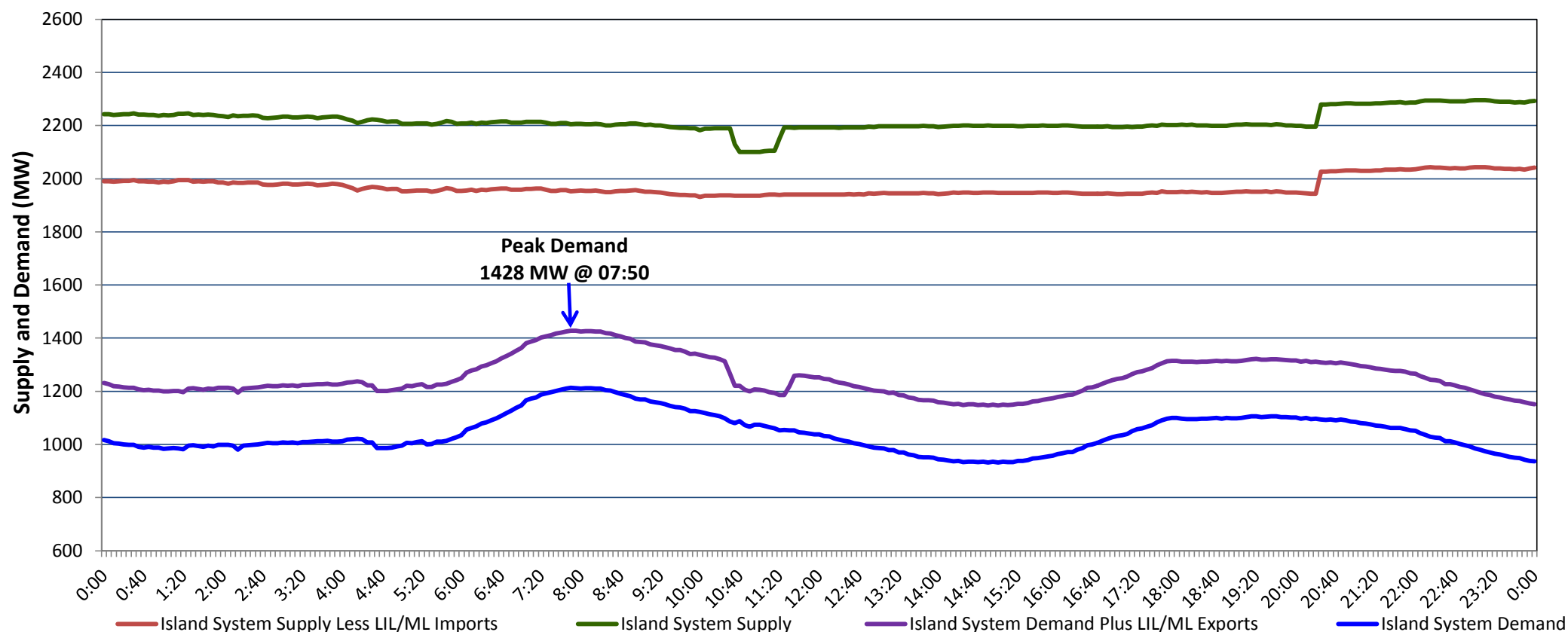


**Newfoundland Labrador Hydro (NLH)  
Supply and Demand Status Report Filed Friday, February 11, 2022**

**Section 1  
Island Interconnected System Supply, Demand & Exports  
Actual 24 Hour System Performance For Thursday, February 10, 2022**



**Supply Notes For February 10, 2022**

1,2

- A As of 1715 hours, January 21, 2022, Holyrood Unit 2 available at 150 MW (170 MW).
- B At 2025 hours, February 10, 2022, Upper Salmon Unit available (84 MW).

**Section 2  
Island Interconnected Supply and Demand**

| Fri, Feb 11, 2022                            | Island System Outlook <sup>3</sup> |     |    | Seven-Day Forecast           | Temperature (°C) |         | Island System Daily Peak Demand (MW) |                       |
|----------------------------------------------|------------------------------------|-----|----|------------------------------|------------------|---------|--------------------------------------|-----------------------|
|                                              |                                    |     |    |                              | Morning          | Evening | Forecast                             | Adjusted <sup>7</sup> |
| Available Island System Supply: <sup>5</sup> | 2,195                              | MW  |    | Friday, February 11, 2022    | 1                | 2       | 1,410                                | 1,306                 |
| NLH Island Generation: <sup>4,8</sup>        | 1,675                              | MW  |    | Saturday, February 12, 2022  | -1               | 6       | 1,200                                | 1,098                 |
| NLH Island Power Purchases: <sup>6</sup>     | 125                                | MW  |    | Sunday, February 13, 2022    | 6                | 2       | 1,205                                | 1,103                 |
| Other Island Generation:                     | 230                                | MW  |    | Monday, February 14, 2022    | -2               | -3      | 1,480                                | 1,375                 |
| ML/LIL Imports:                              | 165                                | MW  |    | Tuesday, February 15, 2022   | -11              | -10     | 1,560                                | 1,454                 |
| Current St. John's Temperature & Windchill:  | 2 °C                               | N/A | °C | Wednesday, February 16, 2022 | -10              | -10     | 1,545                                | 1,439                 |
| 7-Day Island Peak Demand Forecast:           | 1,560                              | MW  |    | Thursday, February 17, 2022  | -3               | 3       | 1,360                                | 1,256                 |

**Supply Notes For February 11, 2022**

3

- Notes:
1. Generation outages for running and corrective maintenance are included. These are not unusual for power system operations. They generally do not impact customer supply. The power system operators schedule outages to system equipment whenever possible to coincide with periods when customer demands are low and sufficient supply reserves are available. However, from time to time equipment outages are necessary and reserves may be impacted.
  2. Due to the Island system having no synchronous connections to the larger North American grid, when there is a sudden loss of large generating units there may be a requirement for some customer's load to be interrupted for short periods to bring generation output equal to customer demand. This automatic action of power system protection, referred to as under frequency load shedding (UFLS), is necessary to ensure the integrity and reliability of system equipment. Under frequency events have typically occurred 5 to 8 times per year on the Island Interconnected System and the resultant customer load interruptions are generally less than 30 minutes. With the activation of the Maritime Link frequency controller during the winter of 2018, UFLS events have occurred less frequently.
  3. As of 0800 Hours.
  4. Gross output including station service at Holyrood (24.5 MW) and improved NLH hydraulic output due to water levels (35 MW).
  5. Gross output from all Island sources (including Note 4).
  6. NLH Island Power Purchases include: CBPP Co-Gen, Nalcor Exploits, Rattle Brook, Star Lake, Wind Generation and capacity assistance (when applicable).
  7. Adjusted for curtailable load, market activities and the impact of voltage reduction when applicable.
  8. Due to limitations inherent in the design of combustion turbines, the output of combustion turbines may be reduced in the event that ambient temperatures exceed the threshold required for full rated output. This threshold is dependent on the design of each turbine.

**Section 3  
Island Peak Demand Information  
Previous Day Actual Peak and Current Day Forecast Peak**

|                   |                                        |       |          |
|-------------------|----------------------------------------|-------|----------|
| Thu, Feb 10, 2022 | Actual Island Peak Demand <sup>9</sup> | 07:50 | 1,428 MW |
| Fri, Feb 11, 2022 | Forecast Island Peak Demand            |       | 1,410 MW |

- Notes: 9. Island Demand / LIL / ML Exports (where applicable) is supplied by NLH generation and purchases, plus generation owned and operated by Newfoundland Power and Corner Brook Pulp & Paper (Deer Lake Power, DLP).