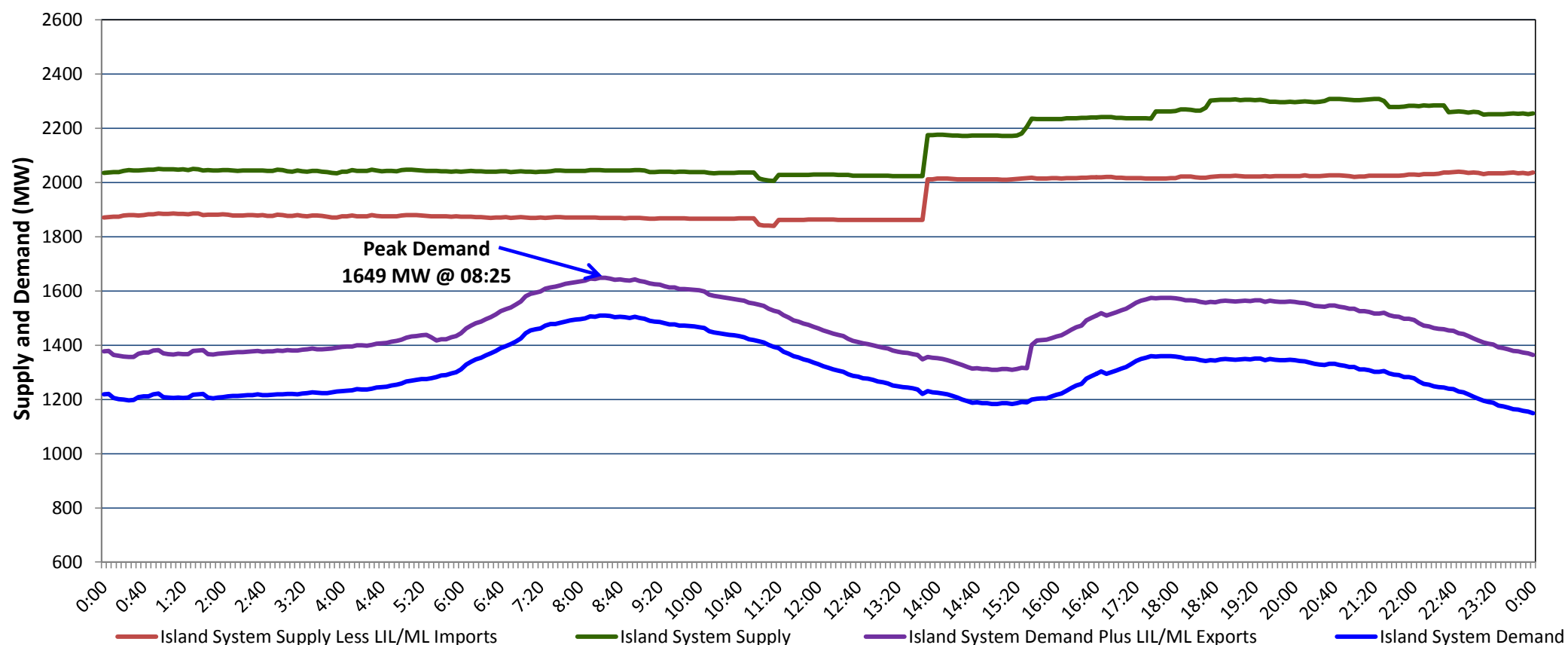


**Newfoundland Labrador Hydro (NLH)  
Supply and Demand Status Report Filed Thursday, February 03, 2022**

**Section 1  
Island Interconnected System Supply, Demand & Exports  
Actual 24 Hour System Performance For Wednesday, February 02, 2022**



**Supply Notes For February 02, 2022**

1,2

- A As of 1715 hours, January 21, 2022, Holyrood Unit 2 available at 150 MW (170 MW).  
 B At 1350 hours, February 02, 2022, Holyrood Unit 3 available (150 MW).

**Section 2  
Island Interconnected Supply and Demand**

Thu, Feb 03, 2022	Island System Outlook <sup>3</sup>		Seven-Day Forecast	Temperature (°C)		Island System Daily Peak Demand (MW)	
				Morning	Evening	Forecast	Adjusted <sup>7</sup>
Available Island System Supply: <sup>5</sup>	2,290	MW	Thursday, February 03, 2022	-3	1	1,575	1,469
NLH Island Generation: <sup>4,8</sup>	1,675	MW	Friday, February 04, 2022	3	0	1,400	1,296
NLH Island Power Purchases: <sup>6</sup>	120	MW	Saturday, February 05, 2022	8	7	1,225	1,123
Other Island Generation:	225	MW	Sunday, February 06, 2022	-7	-9	1,490	1,385
ML/LIL Imports:	270	MW	Monday, February 07, 2022	-10	-5	1,515	1,409
Current St. John's Temperature & Windchill:	-2 °C	-9 °C	Tuesday, February 08, 2022	-4	-2	1,360	1,256
7-Day Island Peak Demand Forecast:	1,575	MW	Wednesday, February 09, 2022	3	-1	1,300	1,197

**Supply Notes For February 03, 2022**

3

- Notes:
1. Generation outages for running and corrective maintenance are included. These are not unusual for power system operations. They generally do not impact customer supply. The power system operators schedule outages to system equipment whenever possible to coincide with periods when customer demands are low and sufficient supply reserves are available. However, from time to time equipment outages are necessary and reserves may be impacted.
  2. Due to the Island system having no synchronous connections to the larger North American grid, when there is a sudden loss of large generating units there may be a requirement for some customer's load to be interrupted for short periods to bring generation output equal to customer demand. This automatic action of power system protection, referred to as under frequency load shedding (UFLS), is necessary to ensure the integrity and reliability of system equipment. Under frequency events have typically occurred 5 to 8 times per year on the Island Interconnected System and the resultant customer load interruptions are generally less than 30 minutes. With the activation of the Maritime Link frequency controller during the winter of 2018, UFLS events have occurred less frequently.
  3. As of 0800 Hours.
  4. Gross output including station service at Holyrood (24.5 MW) and improved NLH hydraulic output due to water levels (35 MW).
  5. Gross output from all Island sources (including Note 4).
  6. NLH Island Power Purchases include: CBPP Co-Gen, Nalcor Exploits, Rattle Brook, Star Lake, Wind Generation and capacity assistance (when applicable).
  7. Adjusted for curtailable load, market activities and the impact of voltage reduction when applicable.
  8. Due to limitations inherent in the design of combustion turbines, the output of combustion turbines may be reduced in the event that ambient temperatures exceed the threshold required for full rated output. This threshold is dependent on the design of each turbine.

**Section 3  
Island Peak Demand Information  
Previous Day Actual Peak and Current Day Forecast Peak**

Wed, Feb 02, 2022	Actual Island Peak Demand <sup>9</sup>	08:25	1,649 MW
Thu, Feb 03, 2022	Forecast Island Peak Demand		1,575 MW

- Notes: 9. Island Demand / LIL / ML Exports (where applicable) is supplied by NLH generation and purchases, plus generation owned and operated by Newfoundland Power and Corner Brook Pulp & Paper (Deer Lake Power, DLP).