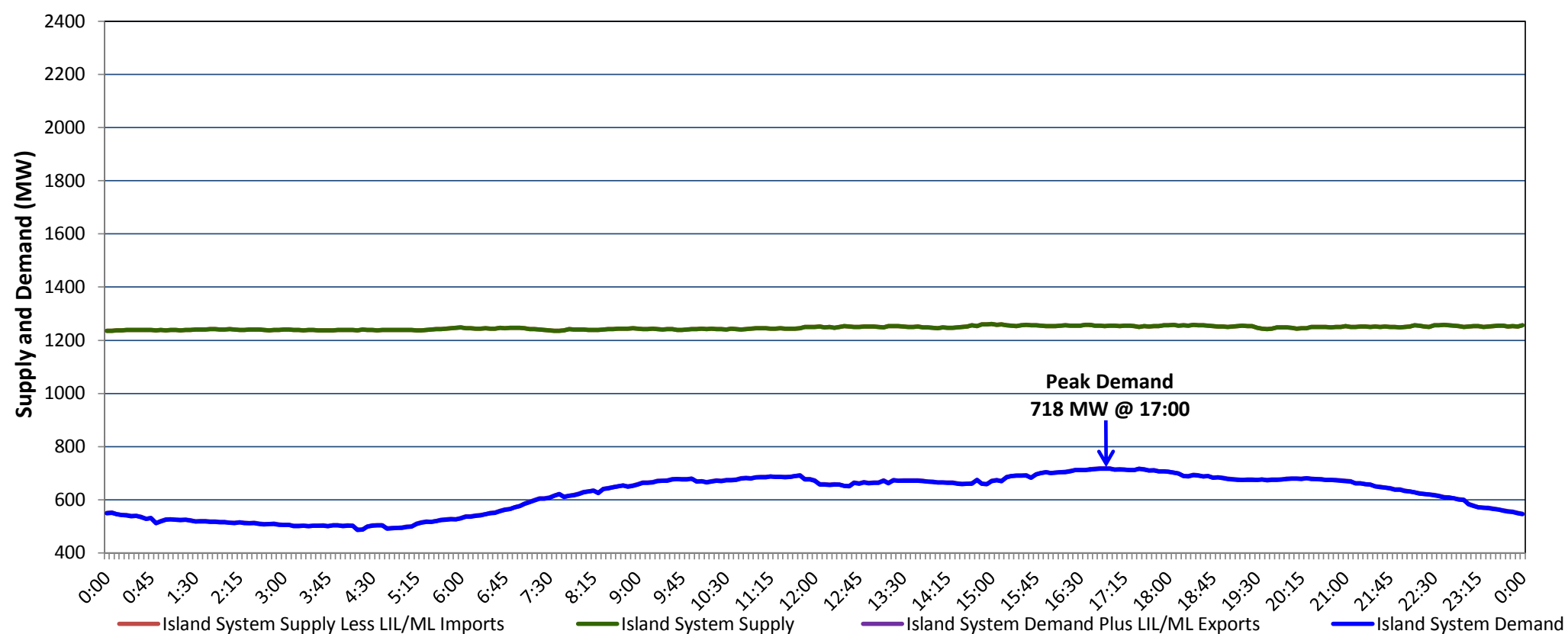


**Newfoundland Labrador Hydro (NLH)
Supply and Demand Status Report Filed Monday, August 30, 2021**

**Section 1
Island Interconnected System Supply, Demand & Exports
Actual 24 Hour System Performance For Friday, August 27, 2021**



Supply Notes For August 27, 2021

- 1,2
- A As of 0804 hours, May 26, 2021, Holyrood Unit 1 unavailable due to planned outage (170 MW).
 - B As of 0850 hours, July 25, 2021, Bay d'Espoir Unit 5 unavailable due to planned outage (76.5 MW).
 - C As of 1051 hours, July 25, 2021, Bay d'Espoir Unit 6 unavailable due to planned outage (76.5 MW).
 - D As of 1052 hours, August 01, 2021, Upper Salmon Unit unavailable due to planned outage (84 MW).
 - E As of 1500 hours, August 12, 2021, Holyrood Unit 2 unavailable due to planned outage (170 MW).
 - F At 2046 hours, August 27, 2021, Holyrood Unit 3 unavailable due to planned outage (150 MW).

**Section 2
Island Interconnected Supply and Demand**

Sat, Aug 28, 2021	Island System Outlook ³			Seven-Day Forecast	Temperature (°C)		Island System Daily Peak Demand (MW)	
					Morning	Evening	Forecast	Adjusted ⁷
Available Island System Supply: ⁵	1,215	MW		Saturday, August 28, 2021	14	12	750	750
NLH Island Generation: ^{4,8}	900	MW		Sunday, August 29, 2021	12	12	760	760
NLH Island Power Purchases: ⁶	90	MW		Monday, August 30, 2021	12	13	785	785
Other Island Generation:	225	MW		Tuesday, August 31, 2021	15	15	745	745
ML/LIL Imports:	-	MW		Wednesday, September 01, 2021	17	18	730	730
Current St. John's Temperature & Windchill:	14 °C	N/A	°C	Thursday, September 02, 2021	17	16	730	730
7-Day Island Peak Demand Forecast:	815	MW		Friday, September 03, 2021	19	11	815	815

Supply Notes For August 28, 2021

- 3
- G At 0054 hours, August 28, 2021, Cat Arm Unit 2 unavailable (67 MW).

- Notes:
1. Generation outages for running and corrective maintenance are included. These are not unusual for power system operations. They generally do not impact customer supply. The power system operators schedule outages to system equipment whenever possible to coincide with periods when customer demands are low and sufficient supply reserves are available. However, from time to time equipment outages are necessary and reserves may be impacted.
 2. Due to the Island system having no synchronous connections to the larger North American grid, when there is a sudden loss of large generating units there may be a requirement for some customer's load to be interrupted for short periods to bring generation output equal to customer demand. This automatic action of power system protection, referred to as under frequency load shedding (UFLS), is necessary to ensure the integrity and reliability of system equipment. Under frequency events have typically occurred 5 to 8 times per year on the Island Interconnected System and the resultant customer load interruptions are generally less than 30 minutes. With the activation of the Maritime Link frequency controller during the winter of 2018, UFLS events have occurred less frequently.
 3. As of 0800 Hours.
 4. Gross output including station service at Holyrood (24.5 MW) and improved NLH hydraulic output due to water levels (35 MW).
 5. Gross output from all Island sources (including Note 4).
 6. NLH Island Power Purchases include: CBPP Co-Gen, Nalcor Exploits, Rattle Brook, Star Lake, Wind Generation and capacity assistance (when applicable).
 7. Adjusted for curtailable load, market activities and the impact of voltage reduction when applicable.
 8. Due to limitations inherent in the design of combustion turbines, the output of combustion turbines may be reduced in the event that ambient temperatures exceed the threshold required for full rated output. This threshold is dependent on the design of each turbine.

**Section 3
Island Peak Demand Information
Previous Day Actual Peak and Current Day Forecast Peak**

Fri, Aug 27, 2021	Actual Island Peak Demand ⁸	17:00	718 MW
Sat, Aug 28, 2021	Forecast Island Peak Demand		750 MW

- Notes: 8. Island Demand / LIL / ML Exports (where applicable) is supplied by NLH generation and purchases, plus generation owned and operated by Newfoundland Power and Corner Brook Pulp & Paper (Deer Lake Power, DLP).