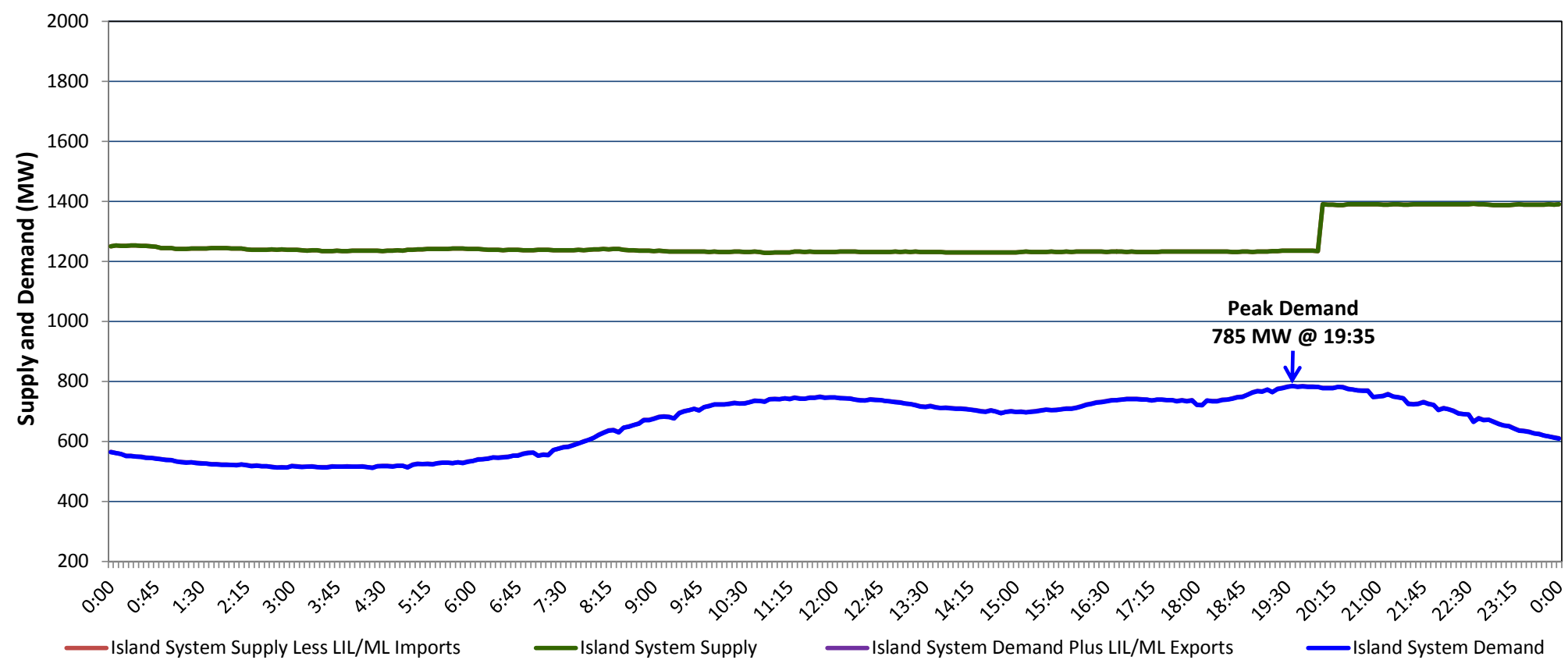


**Newfoundland Labrador Hydro (NLH)
Supply and Demand Status Report Filed Monday, October 05, 2020**

**Section 1
Island Interconnected System Supply, Demand & Exports
Actual 24 Hour System Performance For Sunday, October 04, 2020**



Supply Notes For October 04, 2020

- 1,2
- A As of 0853 hours, June 21, 2020, Holyrood Unit 3 available but not operating (150 MW).
 - B As of 0808 hours, July 15, 2020, Holyrood Unit 2 unavailable due to planned outage (170 MW).
 - C As of 1811 hours, September 02, 2020, Holyrood Unit 1 available but not operating (170 MW).
 - D As of 0705 hours, September 22, 2020, Hardwoods Gas Turbine unavailable due to planned outage (50 MW).
 - E As of 0734 hours, September 27, 2020, Hinds Lake Unit unavailable due to planned outage (75 MW).
 - F At 2102 hours, October 04, 2020, Bay d'Espoir Unit 7 available (154.4 MW).

**Section 2
Island Interconnected Supply and Demand**

Mon, Oct 05, 2020	Island System Outlook ³	Seven-Day Forecast	Temperature (°C)		Island System Daily Peak Demand (MW)	
			Morning	Evening	Forecast	Adjusted ⁷
Available Island System Supply: ⁵	1,335 MW	Monday, October 05, 2020	8	7	845	845
NLH Island Generation: ⁴	1,000 MW	Tuesday, October 06, 2020	8	7	875	875
NLH Island Power Purchases: ⁶	105 MW	Wednesday, October 07, 2020	9	12	825	825
Other Island Generation:	230 MW	Thursday, October 08, 2020	14	12	815	815
ML/LIL Imports:	- MW	Friday, October 09, 2020	8	3	940	940
Current St. John's Temperature & Windchill:	8 °C	Saturday, October 10, 2020	6	7	1,155	1,155
7-Day Island Peak Demand Forecast:	1,155 MW	Sunday, October 11, 2020	14	13	1,145	1,145

Supply Notes For October 05, 2020

- 3
- G At 0648 hours, October 05, 2020, Bay d'Espoir Unit 3 unavailable due to planned outage (76.5 MW).

- Notes:
- Generation outages for running and corrective maintenance are included. These are not unusual for power system operations. They generally do not impact customer supply. The power system operators schedule outages to system equipment whenever possible to coincide with periods when customer demands are low and sufficient supply reserves are available. However, from time to time equipment outages are necessary and reserves may be impacted.
 - Due to the Island system having no synchronous connections to the larger North American grid, when there is a sudden loss of large generating units there may be a requirement for some customer's load to be interrupted for short periods to bring generation output equal to customer demand. This automatic action of power system protection, referred to as under frequency load shedding (UFLS), is necessary to ensure the integrity and reliability of system equipment. Under frequency events have typically occurred 5 to 8 times per year on the Island Interconnected System and the resultant customer load interruptions are generally less than 30 minutes. With the activation of the Maritime Link frequency controller during the winter of 2018, UFLS events have occurred less frequently.
 - As of 0800 Hours.
 - Gross output including station service at Holyrood (24.5 MW) and improved NLH hydraulic output due to water levels (35 MW).
 - Gross output from all Island sources (including Note 4).
 - NLH Island Power Purchases include: CBPP Co-Gen, Nalcor Exploits, Rattle Brook, Star Lake, Wind Generation and capacity assistance (when applicable).
 - Adjusted for curtailable load, market activities and the impact of voltage reduction when applicable.

**Section 3
Island Peak Demand Information
Previous Day Actual Peak and Current Day Forecast Peak**

Sun, Oct 04, 2020	Actual Island Peak Demand ⁸	19:35	785 MW
Mon, Oct 05, 2020	Forecast Island Peak Demand		845 MW

- Notes: 8. Island Demand / LIL / ML Exports (where applicable) is supplied by NLH generation and purchases, plus generation owned and operated by Newfoundland Power and Corner Brook Pulp & Paper (Deer Lake Power, DLP).