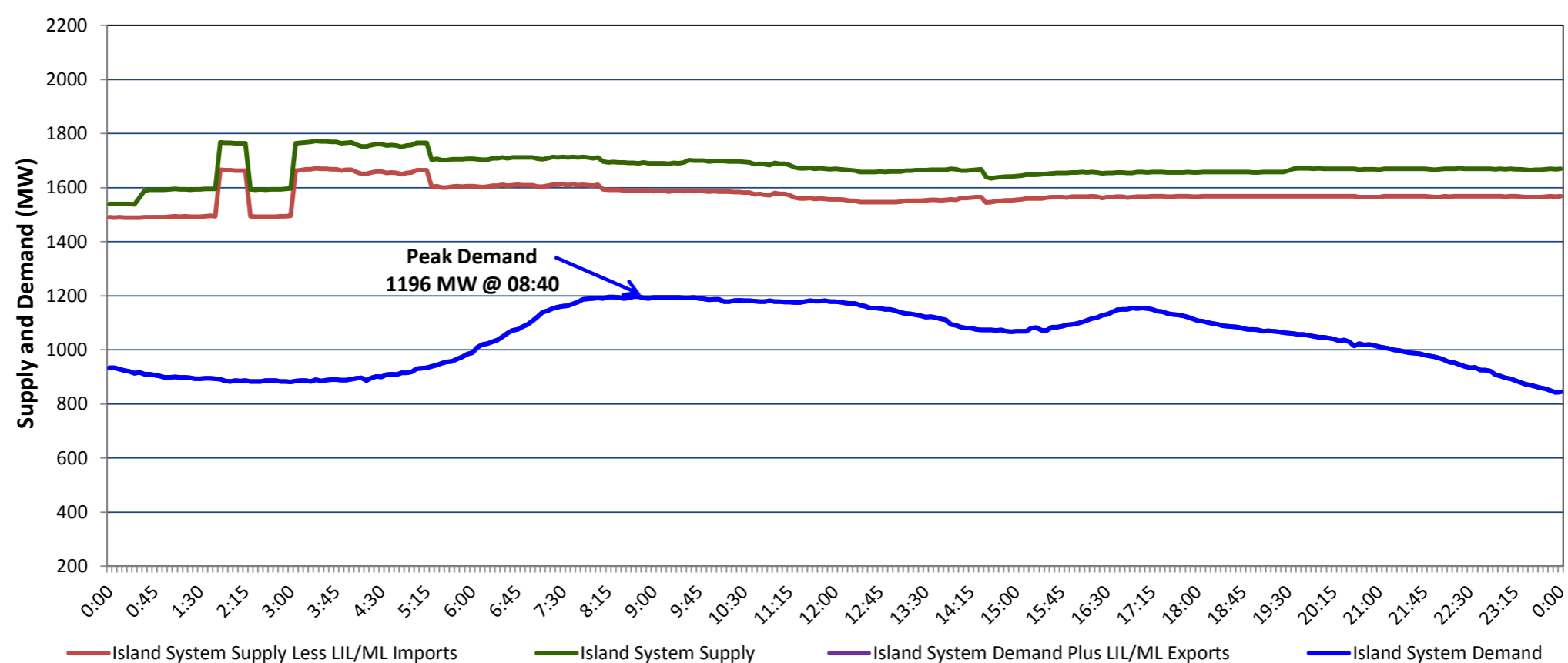


**Newfoundland Labrador Hydro (NLH)
Supply and Demand Status Report Filed Wednesday, November 20, 2019**

**Section 1
Island Interconnected System Supply, Demand & Exports
Actual 24 Hour System Performance For Tuesday, November 19, 2019**



Supply Notes For November 19, 2019

- A As of 1150 hours, August 18, 2019, Hinds Lake Unit unavailable due to planned outage (75 MW).
- B As of 0800 hours, November 07, 2019, St. Anthony Diesel Plant available at 8.85 MW (9.7 MW).
- C As of 0800 hours, November 10, 2019, Holyrood Gas Turbine unavailable due to planned outage (123.5 MW).
- D As of 1124 hours, November 17, 2019, Bay d'Espoir Unit 4 unavailable (76.5 MW).
- E As of 1400 hours, November 17, 2019, Bay d'Espoir Unit 3 available at 70 MW (76.5 MW).
- F As of 0636 hours, November 18, 2019, Paradise River Unit unavailable (8 MW).
- G At 0149 hours, November 19, 2019, Holyrood Unit 2 returned to service (170 MW).
- H At 0219 hours, November 19, 2019, Holyrood Unit 2 unavailable (170 MW).
- I At 0301 hours, November 19, 2019, Holyrood Unit 2 available (170 MW).
- J At 0520 hours, November 19, 2019, Cat Arm Unit 2 unavailable due to planned outage (67 MW).
- K At 1426 hours, November 19, 2019, Stephenville Gas Turbine unavailable due to planned outage 25 MW (50 MW).

**Section 2
Island Interconnected Supply and Demand**

Wed, Nov 20, 2019	Island System Outlook ³	Seven-Day Forecast	Temperature (°C)		Island System Daily Peak Demand (MW)	
			Morning	Evening	Forecast	Adjusted ⁷
Available Island System Supply: ⁵	1,682 MW	Wednesday, November 20, 2019	4	3	1,185	1,091
NLH Island Generation: ⁴	1,285 MW	Thursday, November 21, 2019	3	5	1,240	1,146
NLH Island Power Purchases: ⁶	105 MW	Friday, November 22, 2019	5	4	1,165	1,072
Other Island Generation:	190 MW	Saturday, November 23, 2019	3	3	1,165	1,072
ML/LIL Imports:	102 MW	Sunday, November 24, 2019	2	2	1,195	1,101
Current St. John's Temperature & Windchill:	3 °C	Monday, November 25, 2019	4	2	1,300	1,205
7-Day Island Peak Demand Forecast:	1,300 MW	Tuesday, November 26, 2019	6	6	1,160	1,067

Supply Notes For November 20, 2019

- Notes:
1. Generation outages for running and corrective maintenance are included. These are not unusual for power system operations. They generally do not impact customer supply. The power system operators schedule outages to system equipment whenever possible to coincide with periods when customer demands are low and sufficient supply reserves are available. However, from time to time equipment outages are necessary and reserves may be impacted.
 2. Due to the Island system having no synchronous connections to the larger North American grid, when there is a sudden loss of large generating units there may be a requirement for some customer's load to be interrupted for short periods to bring generation output equal to customer demand. This automatic action of power system protection, referred to as under frequency load shedding (UFLS), is necessary to ensure the integrity and reliability of system equipment. Under frequency events have typically occurred 5 to 8 times per year on the Island Interconnected System and the resultant customer load interruptions are generally less than 30 minutes. With the activation of the Maritime Link frequency controller during the winter of 2018, UFLS events have occurred less frequently.
 3. As of 0800 Hours.
 4. Gross output including station service at Holyrood (24.5 MW) and improved NLH hydraulic output due to water levels (35 MW).
 5. Gross output from all Island sources (including Note 4).
 6. NLH Island Power Purchases include: CBPP Co-Gen, Nalcor Exploits, Rattle Brook, Star Lake, Wind Generation and capacity assistance (when applicable).
 7. Adjusted for curtailable load, market activities and the impact of voltage reduction when applicable.

**Section 3
Island Peak Demand Information
Previous Day Actual Peak and Current Day Forecast Peak**

Tue, Nov 19, 2019	Actual Island Peak Demand ⁸	08:40	1,196 MW
Wed, Nov 20, 2019	Forecast Island Peak Demand		1,185 MW

- Notes: 8. Island Demand / LIL / ML Exports (where applicable) is supplied by NLH generation and purchases, plus generation owned and operated by Newfoundland Power and Corner Brook Pulp & Paper (Deer Lake Power, DLP).