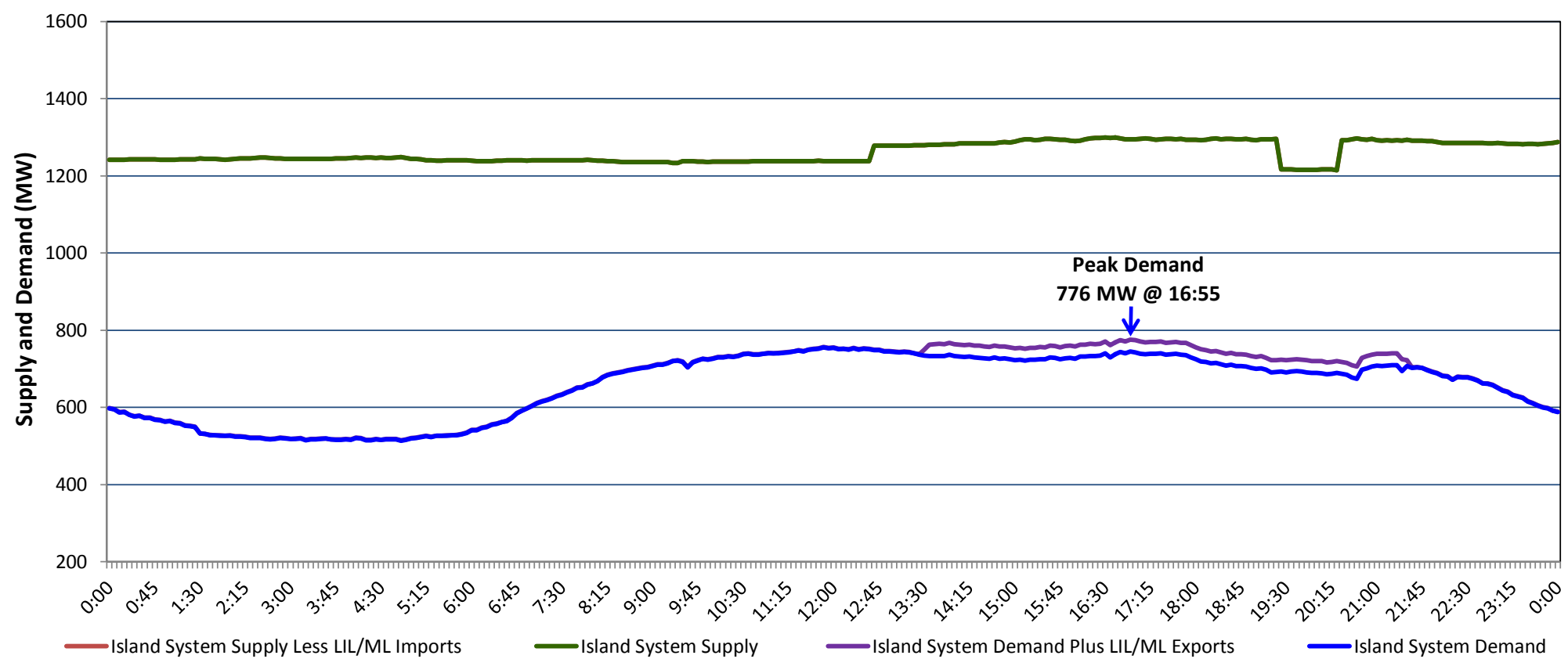


**Newfoundland Labrador Hydro (NLH)  
Supply and Demand Status Report Filed Wednesday, July 31, 2019**

**Section 1  
Island Interconnected System Supply, Demand & Exports  
Actual 24 Hour System Performance For Tuesday, July 30, 2019**



**Supply Notes For July 30, 2019**

1,2

- A As of 1303 hours, May 26, 2019, Bay d'Espoir Unit 7 unavailable due to planned outage (153.4 MW).
- B As of 0800 hours, June 17, 2019, Holyrood Unit 2 unavailable due to planned outage (170 MW).
- C As of 1457 hours, June 28, 2019, Stephenville Gas Turbine available at 25 MW (50 MW).
- D As of 0644 hours, July 29, 2019, Paradise River Unit unavailable (8 MW).
- E As of 0800 hours, July 29, 2019, Holyrood Unit 1 unavailable due to planned outage (170 MW).
- F As of 0800 hours, July 29, 2019, Holyrood Unit 3 unavailable due to planned outage (150 MW).
- G At 1239 hours, July 30, 2019, Granite Canal Unit available (40 MW).
- H At 1925 hours, July 30, 2019, Bay d'Espoir Unit 1 unavailable due to planned outage (76.5 MW).
- I At 2022 hours, July 30, 2019, Bay d'Espoir Unit 1 available (76.5 MW).

**Section 2  
Island Interconnected Supply and Demand**

Wed, Jul 31, 2019	Island System Outlook <sup>3</sup>	Seven-Day Forecast	Temperature (°C)		Island System Daily Peak Demand (MW)	
			Morning	Evening	Forecast	Adjusted <sup>7</sup>
Available Island System Supply: <sup>5</sup>	<b>1,195</b> MW	Wednesday, July 31, 2019	14	21	<b>775</b>	<b>775</b>
NLH Island Generation: <sup>4</sup>	950 MW	Thursday, August 01, 2019	19	22	785	785
NLH Island Power Purchases: <sup>6</sup>	65 MW	Friday, August 02, 2019	19	19	810	810
Other Island Generation:	180 MW	Saturday, August 03, 2019	19	20	760	760
ML/LIL Imports:	-	Sunday, August 04, 2019	19	19	770	770
Current St. John's Temperature & Windchill:	13 °C	Monday, August 05, 2019	17	17	785	785
7-Day Island Peak Demand Forecast:	<b>810</b> MW	Tuesday, August 06, 2019	16	14	785	785

**Supply Notes For July 31, 2019**

3

- J At 0503 hours, July 31, 2019, Cat Arm Unit 1 unavailable due to planned outage (67 MW).

- Notes:
1. Generation outages for running and corrective maintenance are included. These are not unusual for power system operations. They generally do not impact customer supply. The power system operators schedule outages to system equipment whenever possible to coincide with periods when customer demands are low and sufficient supply reserves are available. However, from time to time equipment outages are necessary and reserves may be impacted.
  2. Due to the Island system having no synchronous connections to the larger North American grid, when there is a sudden loss of large generating units there may be a requirement for some customer's load to be interrupted for short periods to bring generation output equal to customer demand. This automatic action of power system protection, referred to as under frequency load shedding (UFLS), is necessary to ensure the integrity and reliability of system equipment. Under frequency events have typically occurred 5 to 8 times per year on the Island Interconnected System and the resultant customer load interruptions are generally less than 30 minutes. With the activation of the Maritime Link frequency controller during the winter of 2018, UFLS events have occurred less frequently.
  3. As of 0800 Hours.
  4. Gross output including station service at Holyrood (24.5 MW) and improved NLH hydraulic output due to water levels (35 MW).
  5. Gross output from all Island sources (including Note 4).
  6. NLH Island Power Purchases include: CBPP Co-Gen, Nalcor Exploits, Rattle Brook, Star Lake, Wind Generation and capacity assistance (when applicable).
  7. Adjusted for curtailable load, market activities and the impact of voltage reduction when applicable.

**Section 3  
Island Peak Demand Information  
Previous Day Actual Peak and Current Day Forecast Peak**

Tue, Jul 30, 2019	Actual Island Peak Demand <sup>8</sup>	16:55	776 MW
Wed, Jul 31, 2019	Forecast Island Peak Demand		775 MW

Notes: 8. Island Demand / LIL / ML Exports (where applicable) is supplied by NLH generation and purchases, plus generation owned and operated by Newfoundland Power and Corner Brook Pulp & Paper (Deer Lake Power, DLP).