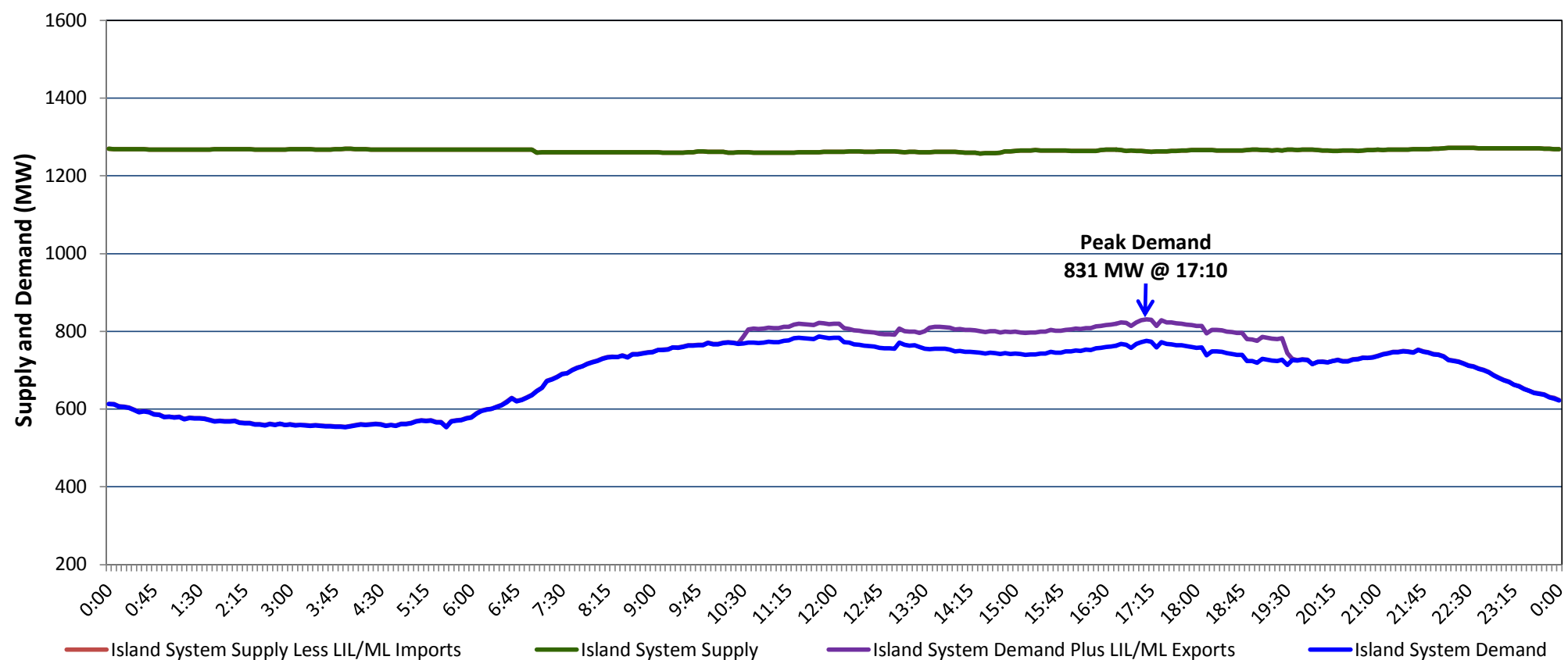


**Newfoundland Labrador Hydro (NLH)  
Supply and Demand Status Report Filed Friday, July 26, 2019**

**Section 1  
Island Interconnected System Supply, Demand & Exports  
Actual 24 Hour System Performance For Thursday, July 25, 2019**



**Supply Notes For July 25, 2019**

- 1,2
- A As of 1303 hours, May 26, 2019, Bay d'Espoir Unit 7 unavailable due to planned outage (153.4 MW).
  - B As of 1436 hours, June 15, 2019, Holyrood Unit 1 removed from service for economic dispatch (170 MW).
  - C As of 0800 hours, June 17, 2019, Holyrood Unit 2 unavailable due to planned outage (170 MW).
  - D As of 1457 hours, June 28, 2019, Stephenville Gas Turbine available at 25 MW (50 MW).
  - E As of 1700 hours, July 19, 2019, Holyrood Unit 3 removed from service for economic dispatch (150 MW).
  - F At 1430 hours, July 25, 2019, St. Anthony Diesel Plant available at full capacity (9.7 MW).

**Section 2  
Island Interconnected Supply and Demand**

Fri, Jul 26, 2019	Island System Outlook <sup>3</sup>		Seven-Day Forecast	Temperature (°C)		Island System Daily Peak Demand (MW)	
				Morning	Evening	Forecast	Adjusted <sup>7</sup>
Available Island System Supply: <sup>5</sup>	1,280	MW	Friday, July 26, 2019	14	15	790	790
NLH Island Generation: <sup>4</sup>	1,025	MW	Saturday, July 27, 2019	16	19	775	775
NLH Island Power Purchases: <sup>6</sup>	80	MW	Sunday, July 28, 2019	18	17	770	770
Other Island Generation:	175	MW	Monday, July 29, 2019	17	15	795	795
ML/LIL Imports:	-	MW	Tuesday, July 30, 2019	14	13	785	785
Current St. John's Temperature & Windchill: 12 °C	N/A	°C	Wednesday, July 31, 2019	16	16	775	775
7-Day Island Peak Demand Forecast:	840	MW	Thursday, August 01, 2019	11	11	840	840

**Supply Notes For July 26, 2019**

- 3
- Notes:
1. Generation outages for running and corrective maintenance are included. These are not unusual for power system operations. They generally do not impact customer supply. The power system operators schedule outages to system equipment whenever possible to coincide with periods when customer demands are low and sufficient supply reserves are available. However, from time to time equipment outages are necessary and reserves may be impacted.
  2. Due to the Island system having no synchronous connections to the larger North American grid, when there is a sudden loss of large generating units there may be a requirement for some customer's load to be interrupted for short periods to bring generation output equal to customer demand. This automatic action of power system protection, referred to as under frequency load shedding (UFLS), is necessary to ensure the integrity and reliability of system equipment. Under frequency events have typically occurred 5 to 8 times per year on the Island Interconnected System and the resultant customer load interruptions are generally less than 30 minutes. With the activation of the Maritime Link frequency controller during the winter of 2018, UFLS events have occurred less frequently.
  3. As of 0800 Hours.
  4. Gross output including station service at Holyrood (24.5 MW) and improved NLH hydraulic output due to water levels (35 MW).
  5. Gross output from all Island sources (including Note 4).
  6. NLH Island Power Purchases include: CBPP Co-Gen, Nalcor Exploits, Rattle Brook, Star Lake, Wind Generation and capacity assistance (when applicable).
  7. Adjusted for curtailable load, market activities and the impact of voltage reduction when applicable.

**Section 3  
Island Peak Demand Information  
Previous Day Actual Peak and Current Day Forecast Peak**

Thu, Jul 25, 2019	Actual Island Peak Demand <sup>8</sup>	17:10	831 MW
Fri, Jul 26, 2019	Forecast Island Peak Demand		790 MW

- Notes: 8. Island Demand / LIL / ML Exports (where applicable) is supplied by NLH generation and purchases, plus generation owned and operated by Newfoundland Power and Corner Brook Pulp & Paper (Deer Lake Power, DLP).