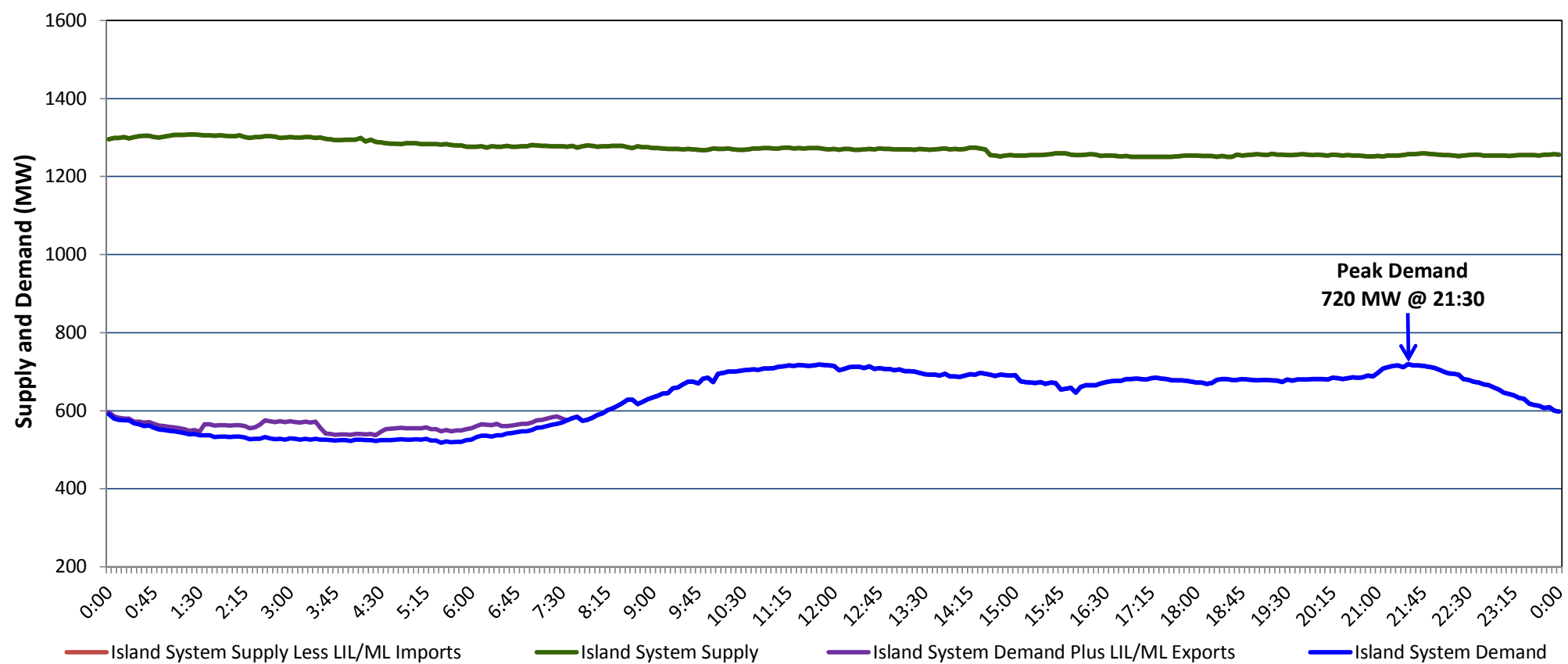


**Newfoundland Labrador Hydro (NLH)  
Supply and Demand Status Report Filed Tuesday, July 16, 2019**

**Section 1  
Island Interconnected System Supply, Demand & Exports  
Actual 24 Hour System Performance For Sunday, July 14, 2019**



**Supply Notes For July 14, 2019**

1,2

- A As of 0000 hours, April 01, 2019, Holyrood Unit 3 unavailable due to planned outage (150 MW).
- B As of 0729 hours, May 12, 2019, St. Anthony Diesel Plant available at 8.85 MW (9.7 MW).
- C As of 1303 hours, May 26, 2019, Bay d'Espoir Unit 7 unavailable due to planned outage (153.4 MW).
- D As of 1436 hours, June 15, 2019, Holyrood Unit 1 removed from service for economic dispatch (170 MW).
- E As of 0800 hours, June 17, 2019, Holyrood Unit 2 unavailable due to planned outage (170 MW).
- F As of 1457 hours, June 28, 2019, Stephenville Gas Turbine available at 25 MW (50 MW).

**Section 2  
Island Interconnected Supply and Demand**

Mon, Jul 15, 2019	Island System Outlook <sup>3</sup>		Seven-Day Forecast	Temperature (°C)		Island System Daily Peak Demand (MW)	
				Morning	Evening	Forecast	Adjusted <sup>7</sup>
Available Island System Supply: <sup>5</sup>	1,270	MW	Monday, July 15, 2019	12	14	795	795
NLH Island Generation: <sup>4</sup>	1,020	MW	Tuesday, July 16, 2019	14	15	770	770
NLH Island Power Purchases: <sup>6</sup>	70	MW	Wednesday, July 17, 2019	12	17	750	750
Other Island Generation:	180	MW	Thursday, July 18, 2019	16	14	760	760
ML/LIL Imports:	-	MW	Friday, July 19, 2019	15	18	760	760
Current St. John's Temperature & Windchill:	11 °C	N/A °C	Saturday, July 20, 2019	12	12	765	765
7-Day Island Peak Demand Forecast:	795	MW	Sunday, July 21, 2019	17	17	745	745

**Supply Notes For July 15, 2019**

3

- Notes:
1. Generation outages for running and corrective maintenance are included. These are not unusual for power system operations. They generally do not impact customer supply. The power system operators schedule outages to system equipment whenever possible to coincide with periods when customer demands are low and sufficient supply reserves are available. However, from time to time equipment outages are necessary and reserves may be impacted.
  2. Due to the Island system having no synchronous connections to the larger North American grid, when there is a sudden loss of large generating units there may be a requirement for some customer's load to be interrupted for short periods to bring generation output equal to customer demand. This automatic action of power system protection, referred to as under frequency load shedding (UFLS), is necessary to ensure the integrity and reliability of system equipment. Under frequency events have typically occurred 5 to 8 times per year on the Island Interconnected System and the resultant customer load interruptions are generally less than 30 minutes. With the activation of the Maritime Link frequency controller during the winter of 2018, UFLS events have occurred less frequently.
  3. As of 0800 Hours.
  4. Gross output including station service at Holyrood (24.5 MW) and improved NLH hydraulic output due to water levels (35 MW).
  5. Gross output from all Island sources (including Note 4).
  6. NLH Island Power Purchases include: CBPP Co-Gen, Nalcor Exploits, Rattle Brook, Star Lake, Wind Generation and capacity assistance (when applicable).
  7. Adjusted for curtailable load, market activities and the impact of voltage reduction when applicable.

**Section 3  
Island Peak Demand Information  
Previous Day Actual Peak and Current Day Forecast Peak**

Sun, Jul 14, 2019	Actual Island Peak Demand <sup>8</sup>	21:30	720 MW
Mon, Jul 15, 2019	Forecast Island Peak Demand		795 MW

- Notes: 8. Island Demand / LIL / ML Exports (where applicable) is supplied by NLH generation and purchases, plus generation owned and operated by Newfoundland Power and Corner Brook Pulp & Paper (Deer Lake Power, DLP).