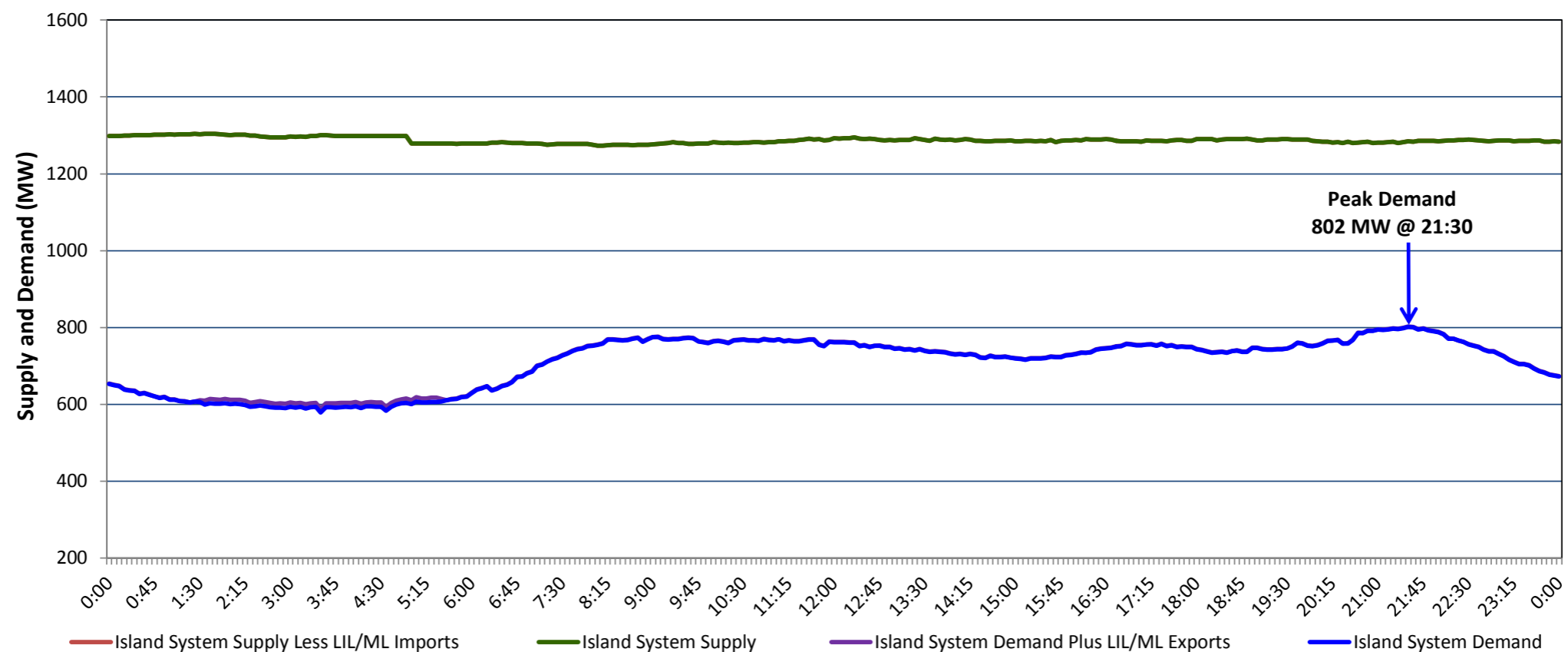


**Newfoundland Labrador Hydro (NLH)
Supply and Demand Status Report Filed Thursday, July 04, 2019**

**Section 1
Island Interconnected System Supply, Demand & Exports
Actual 24 Hour System Performance For Wednesday, July 03, 2019**



Supply Notes For July 03, 2019

- A As of 0000 hours, April 01, 2019, Holyrood Unit 3 unavailable due to planned outage (150 MW).
- B As of 0729 hours, May 12, 2019, St. Anthony Diesel Plant available at 8.85 MW (9.7 MW).
- C As of 1303 hours, May 26, 2019, Bay d'Espoir Unit 7 unavailable due to planned outage (153.4 MW).
- D As of 1436 hours, June 15, 2019, Holyrood Unit 1 removed from service for economic dispatch (170 MW).
- E As of 1507 hours, June 16, 2019, Granite Canal Unit unavailable due to planned outage 36 MW (40 MW).
- F As of 0800 hours, June 17, 2019, Holyrood Unit 2 unavailable due to planned outage (170 MW).
- G As of 1457 hours, June 28, 2019, Stephenville Gas Turbine available at 25 MW (50 MW).

**Section 2
Island Interconnected Supply and Demand**

Thu, Jul 04, 2019	Island System Outlook ³		Seven-Day Forecast	Temperature (°C)		Island System Daily Peak Demand (MW)	
				Morning	Evening	Forecast	Adjusted ⁷
Available Island System Supply: ⁵	1,265	MW	Thursday, July 04, 2019	9	11	855	855
NLH Island Generation: ⁴	980	MW	Friday, July 05, 2019	11	12	845	845
NLH Island Power Purchases: ⁶	110	MW	Saturday, July 06, 2019	17	19	775	775
Other Island Generation:	175	MW	Sunday, July 07, 2019	17	16	760	760
ML/LIL Imports:	-	MW	Monday, July 08, 2019	15	15	785	785
Current St. John's Temperature & Windchill:	9 °C	N/A °C	Tuesday, July 09, 2019	15	15	795	795
7-Day Island Peak Demand Forecast:	855	MW	Wednesday, July 10, 2019	14	15	780	780

Supply Notes For July 04, 2019

- Notes:
1. Generation outages for running and corrective maintenance are included. These are not unusual for power system operations. They generally do not impact customer supply. The power system operators schedule outages to system equipment whenever possible to coincide with periods when customer demands are low and sufficient supply reserves are available. However, from time to time equipment outages are necessary and reserves may be impacted.
 2. Due to the Island system having no synchronous connections to the larger North American grid, when there is a sudden loss of large generating units there may be a requirement for some customer's load to be interrupted for short periods to bring generation output equal to customer demand. This automatic action of power system protection, referred to as under frequency load shedding (UFLS), is necessary to ensure the integrity and reliability of system equipment. Under frequency events have typically occurred 5 to 8 times per year on the Island Interconnected System and the resultant customer load interruptions are generally less than 30 minutes. With the activation of the Maritime Link frequency controller during the winter of 2018, UFLS events have occurred less frequently.
 3. As of 0800 Hours.
 4. Gross output including station service at Holyrood (24.5 MW) and improved NLH hydraulic output due to water levels (35 MW).
 5. Gross output from all Island sources (including Note 4).
 6. NLH Island Power Purchases include: CBPP Co-Gen, Nalcor Exploits, Rattle Brook, Star Lake, Wind Generation and capacity assistance (when applicable).
 7. Adjusted for curtailable load, market activities and the impact of voltage reduction when applicable.

**Section 3
Island Peak Demand Information
Previous Day Actual Peak and Current Day Forecast Peak**

Wed, Jul 03, 2019	Actual Island Peak Demand ⁸	21:30	802 MW
Thu, Jul 04, 2019	Forecast Island Peak Demand		855 MW

Notes: 8. Island Demand / LIL / ML Exports (where applicable) is supplied by NLH generation and purchases, plus generation owned and operated by Newfoundland Power and Corner Brook Pulp & Paper (Deer Lake Power, DLP).