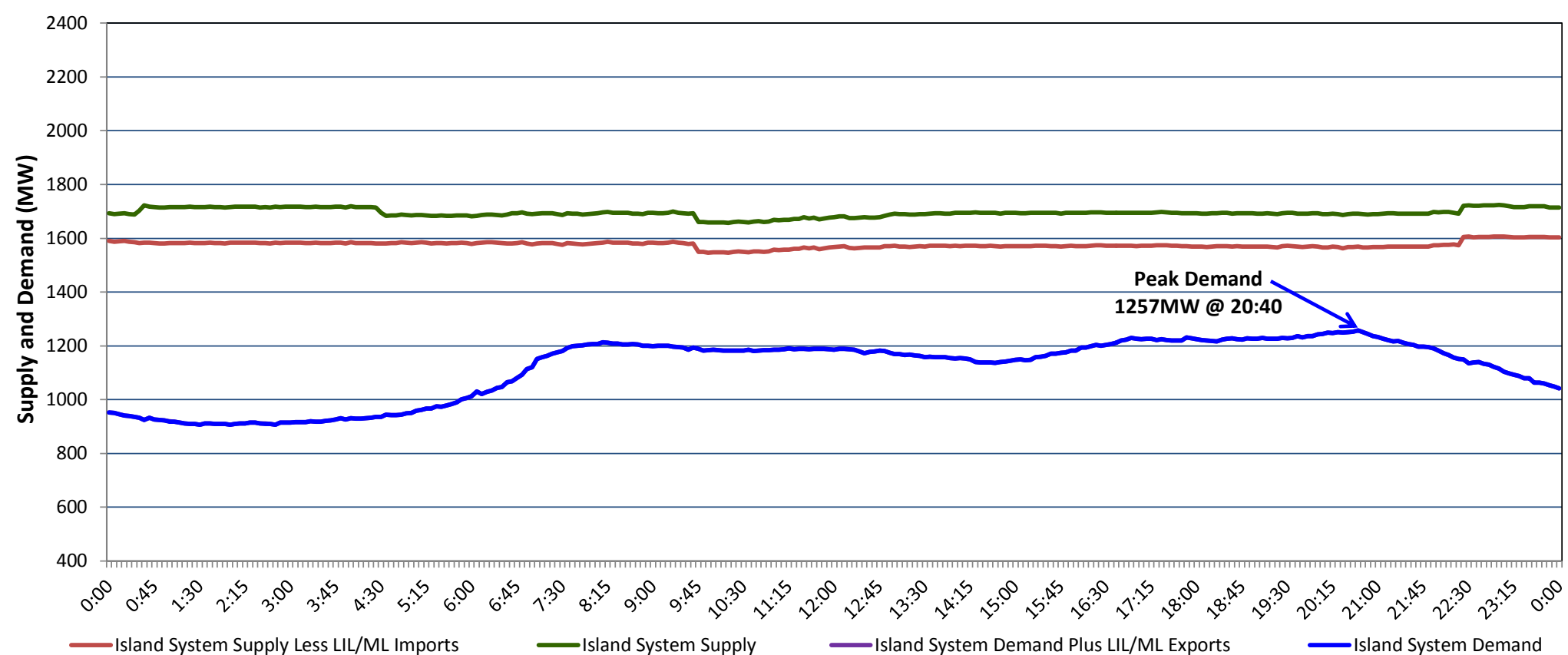


**Newfoundland Labrador Hydro (NLH)
Supply and Demand Status Report Filed Thursday, April 18, 2019**

**Section 1
Island Interconnected System Supply, Demand & Exports
Actual 24 Hour System Performance For Wednesday, April 17, 2019**



Supply Notes For April 17, 2019

- A As of 1049 hours, March 22, 2019, Bay d'Espoir Unit 5 unavailable due to planned outage (76.5 MW).
- B As of 0000 hours, April 01, 2019, Holyrood Unit 3 unavailable due to planned outage (150 MW).
- C As of 1038 hours, April 01, 2019, Hardwoods Gas Turbine available at 25 MW (50 MW).
- D As of 1134 hours, April 12, 2019, Holyrood Unit 2 unavailable (170 MW).
- E As of 1430 hours, April 15, 2019, St. Anthony Diesel Plant available at 7.7 MW (9.7 MW).
- F At 0942 hours, April 17, 2019, Cat Arm Unit 2 unavailable (67 MW).
- G At 2225 hours, April 17, 2019, Cat Arm Unit 2 available (67 MW).
- H At 2225 hours, April 17, 2019, Cat Arm Plant available at 100 MW due to lower than normal water levels (134 MW).

**Section 2
Island Interconnected Supply and Demand**

Thu, Apr 18, 2019	Island System Outlook ³		Seven-Day Forecast	Temperature (°C)		Island System Daily Peak Demand (MW)	
				Morning	Evening	Forecast	Adjusted ⁷
Available Island System Supply: ⁵	1,704	MW	Thursday, April 18, 2019	-1	-1	1,295	1,215
NLH Island Generation: ⁴	1,235	MW	Friday, April 19, 2019	1	0	1,170	1,090
NLH Island Power Purchases: ⁶	140	MW	Saturday, April 20, 2019	9	7	1,020	940
Other Island Generation:	210	MW	Sunday, April 21, 2019	2	9	1,190	1,110
ML/LIL Imports:	119	MW	Monday, April 22, 2019	9	10	1,040	960
Current St. John's Temperature & Windchill:	-2 °C	-9 °C	Tuesday, April 23, 2019	9	1	1,085	1,005
7-Day Island Peak Demand Forecast:	1,295	MW	Wednesday, April 24, 2019	-1	-1	1,220	1,140

Supply Notes For April 18, 2019

- Notes:
1. Generation outages for running and corrective maintenance are included. These are not unusual for power system operations. They generally do not impact customer supply. The power system operators schedule outages to system equipment whenever possible to coincide with periods when customer demands are low and sufficient supply reserves are available. However, from time to time equipment outages are necessary and reserves may be impacted.
 2. Due to the Island system having no synchronous connections to the larger North American grid, when there is a sudden loss of large generating units there may be a requirement for some customer's load to be interrupted for short periods to bring generation output equal to customer demand. This automatic action of power system protection, referred to as under frequency load shedding (UFLS), is necessary to ensure the integrity and reliability of system equipment. Under frequency events have typically occurred 5 to 8 times per year on the Island Interconnected System and the resultant customer load interruptions are generally less than 30 minutes. With the activation of the Maritime Link frequency controller during the winter of 2018, UFLS events have occurred less frequently.
 3. As of 0800 Hours.
 4. Gross output including station service at Holyrood (24.5 MW) and improved NLH hydraulic output due to water levels (35 MW).
 5. Gross output from all Island sources (including Note 4).
 6. NLH Island Power Purchases include: CBPP Co-Gen, Nalcor Exploits, Rattle Brook, Star Lake, Wind Generation and capacity assistance (when applicable).
 7. Adjusted for curtailable load, market activities and the impact of voltage reduction when applicable.

**Section 3
Island Peak Demand Information
Previous Day Actual Peak and Current Day Forecast Peak**

Wed, Apr 17, 2019	Actual Island Peak Demand ⁸	20:40	1,257 MW
Thu, Apr 18, 2019	Forecast Island Peak Demand		1,295 MW

Notes: 8. Island Demand / LIL / ML Exports (where applicable) is supplied by NLH generation and purchases, plus generation owned and operated by Newfoundland Power and Corner Brook Pulp & Paper (Deer Lake Power, DLP).