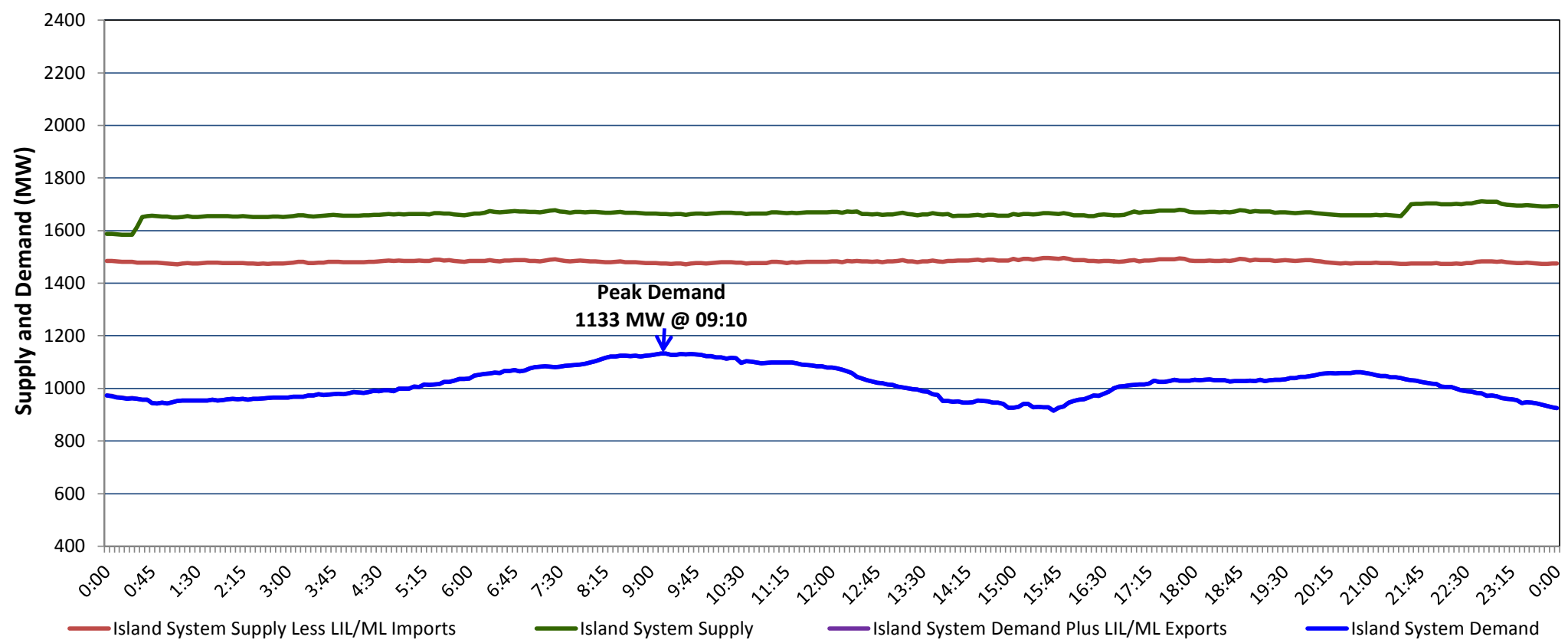


**Newfoundland Labrador Hydro (NLH)
Supply and Demand Status Report Filed Monday, April 15, 2019**

**Section 1
Island Interconnected System Supply, Demand & Exports
Actual 24 Hour System Performance For Saturday, April 13, 2019**



Supply Notes For April 13, 2019

1,2

- A As of 1049 hours, March 22, 2019, Bay d'Espoir Unit 5 unavailable due to planned outage (76.5 MW).
- B As of 0000 hours, April 01, 2019, Holyrood Unit 3 unavailable due to planned outage (150 MW).
- C As of 1038 hours, April 01, 2019, Hardwoods Gas Turbine available at 25 MW (50 MW).
- D As of 1300 hours, April 09, 2019, Holyrood Gas Turbine unavailable due to planned outage (123.5 MW).
- E As of 1134 hours, April 12, 2019, Holyrood Unit 2 unavailable (170 MW).

**Section 2
Island Interconnected Supply and Demand**

Sun, Apr 14, 2019	Island System Outlook ³		Seven-Day Forecast	Temperature (°C)		Island System Daily Peak Demand (MW)	
				Morning	Evening	Forecast	Adjusted ⁷
Available Island System Supply: ⁵	1,652	MW	Sunday, April 14, 2019	4	4	1,080	1,000
NLH Island Generation: ⁴	1,150	MW	Monday, April 15, 2019	0	-1	1,215	1,135
NLH Island Power Purchases: ⁶	145	MW	Tuesday, April 16, 2019	7	3	1,115	1,035
Other Island Generation:	215	MW	Wednesday, April 17, 2019	0	0	1,290	1,210
ML/LIL Imports:	142	MW	Thursday, April 18, 2019	0	-1	1,295	1,215
Current St. John's Temperature & Windchill:	2 °C	N/A °C	Friday, April 19, 2019	1	2	1,160	1,080
7-Day Island Peak Demand Forecast:	1,295	MW	Saturday, April 20, 2019	5	11	1,010	930

Supply Notes For April 14, 2019

3

- Notes:
1. Generation outages for running and corrective maintenance are included. These are not unusual for power system operations. They generally do not impact customer supply. The power system operators schedule outages to system equipment whenever possible to coincide with periods when customer demands are low and sufficient supply reserves are available. However, from time to time equipment outages are necessary and reserves may be impacted.
 2. Due to the Island system having no synchronous connections to the larger North American grid, when there is a sudden loss of large generating units there may be a requirement for some customer's load to be interrupted for short periods to bring generation output equal to customer demand. This automatic action of power system protection, referred to as under frequency load shedding (UFLS), is necessary to ensure the integrity and reliability of system equipment. Under frequency events have typically occurred 5 to 8 times per year on the Island Interconnected System and the resultant customer load interruptions are generally less than 30 minutes. With the activation of the Maritime Link frequency controller during the winter of 2018, UFLS events have occurred less frequently.
 3. As of 0800 Hours.
 4. Gross output including station service at Holyrood (24.5 MW) and improved NLH hydraulic output due to water levels (35 MW).
 5. Gross output from all Island sources (including Note 4).
 6. NLH Island Power Purchases include: CBPP Co-Gen, Nalcor Exploits, Rattle Brook, Star Lake, Wind Generation and capacity assistance (when applicable).
 7. Adjusted for curtailable load, market activities and the impact of voltage reduction when applicable.

**Section 3
Island Peak Demand Information
Previous Day Actual Peak and Current Day Forecast Peak**

Sat, Apr 13, 2019	Actual Island Peak Demand ⁸	09:10	1,133 MW
Sun, Apr 14, 2019	Forecast Island Peak Demand		1,080 MW

- Notes: 8. Island Demand / LIL / ML Exports (where applicable) is supplied by NLH generation and purchases, plus generation owned and operated by Newfoundland Power and Corner Brook Pulp & Paper (Deer Lake Power, DLP).