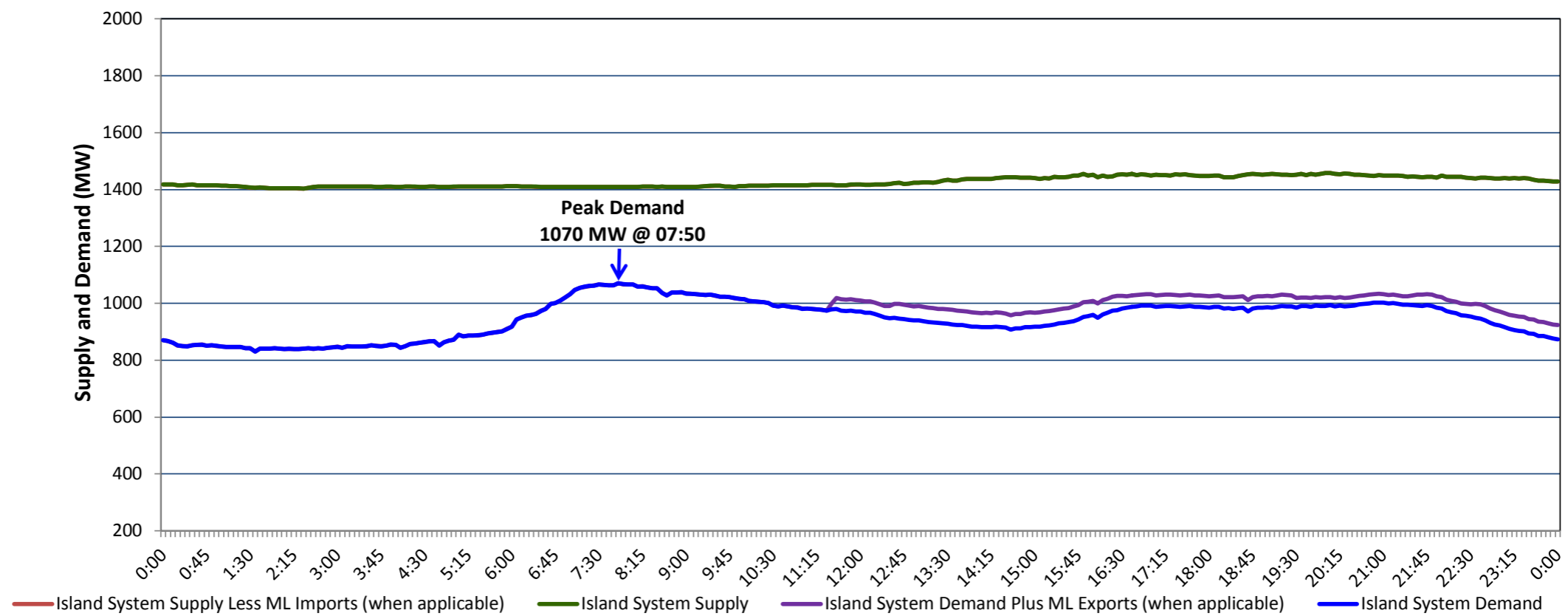


**Newfoundland Labrador Hydro (NLH)
Supply and Demand Status Report Filed Monday, May 28, 2018**

**Section 1
Island Interconnected System Supply, Demand & Exports
Actual 24 Hour System Performance For Friday, May 25, 2018**



Supply Notes For May 25, 2018

1,2

- A As of 2115 hours, January 04, 2018, Stephenville Gas Turbine available at 25 MW (50 MW).
- B As of 0801 hours, April 02, 2018, Holyrood Unit 3 unavailable due to planned outage 110 MW (150 MW).
- C As of 1800 hours, April 29, 2018, Bay d'Espoir Unit 5 unavailable due to planned outage (76.5 MW).
- D As of 0623 hours, May 08, 2018, Bay d'Espoir Unit 6 unavailable due to planned outage (76.5 MW).
- E As of 1753 hours, May 13, 2018, Hardwoods Gas Turbine unavailable (50 MW).
- F As of 0801 hours, May 15, 2018, St. Anthony Diesel Plant available at 7.7 MW (9.7 MW).
- G As of 1834 hours, May 21, 2018, Holyrood Unit 1 available at 116 MW (170 MW).
- H As of 1438 hours, May 22, 2018, Holyrood Unit 2 unavailable due to planned outage 70 MW (170 MW).

**Section 2
Island Interconnected Supply and Demand**

Sat, May 26, 2018	Island System Outlook ³	Seven-Day Forecast	Temperature (°C)		Island System Daily Peak Demand (MW)	
			Morning	Evening	Forecast	Adjusted ⁷
Available Island System Supply: ⁵	1,425 MW	Saturday, May 26, 2018	5	3	1,020	1,020
NLH Generation: ⁴	1,090 MW	Sunday, May 27, 2018	2	2	1,075	1,075
NLH Power Purchases: ⁶	130 MW	Monday, May 28, 2018	3	4	1,005	1,005
Maritime Link Imports:	- MW	Tuesday, May 29, 2018	8	6	955	955
Other Island Generation:	205 MW	Wednesday, May 30, 2018	5	4	1,050	1,050
Current St. John's Temperature & Windchill:	6 °C	Thursday, May 31, 2018	3	6	1,050	1,050
7-Day Island Peak Demand Forecast:	1,075 MW	Friday, June 01, 2018	8	7	875	875

Supply Notes For May 26, 2018

3

- Notes:
1. Generation outages for running and corrective maintenance are included. These are not unusual for power system operations. They generally do not impact customer supply. The power system operators schedule outages to system equipment whenever possible to coincide with periods when customer demands are low and sufficient supply reserves are available. However, from time to time equipment outages are necessary and reserves may be impacted.
 2. Due to the Island System having no synchronous connections to the larger North American grid, when there is a sudden loss of large generating units some customer's load must be interrupted for short periods to bring generation output equal to customer demand. This automatic action of power system protection, referred to as under frequency load shedding, is necessary to ensure the integrity and reliability of system equipment. Under frequency events typically occur 5 to 8 times per year on the Island Interconnected System and the resultant customer load interruptions are generally less than 30 minutes.
 3. As of 0800 Hours.
 4. Gross output including station service at Holyrood (24.5 MW) and improved NLH hydraulic output due to water levels (35 MW).
 5. Gross output from all Island sources (including Note 4).
 6. NLH Power Purchases include: CBPP Co-Gen, Nalcor Exploits, Rattle Brook, Star Lake, Wind Generation, Vale capacity assistance (when applicable).
 7. Adjusted for CBPP, Vale and Praxair interruptible load, Maritime Link exports and the impact of voltage reduction, when applicable.

**Section 3
Island Peak Demand Information
Previous Day Actual Peak and Current Day Forecast Peak**

Fri, May 25, 2018	Actual Island Peak Demand ⁸	07:50	1,070 MW
Sat, May 26, 2018	Forecast Island Peak Demand		1,020 MW

Notes: 8. Island Demand / ML Exports (where applicable) is supplied by NLH generation and purchases, plus generation owned and operated by Newfoundland Power and Corner Brook Pulp & Paper (Deer Lake Power, DLP).