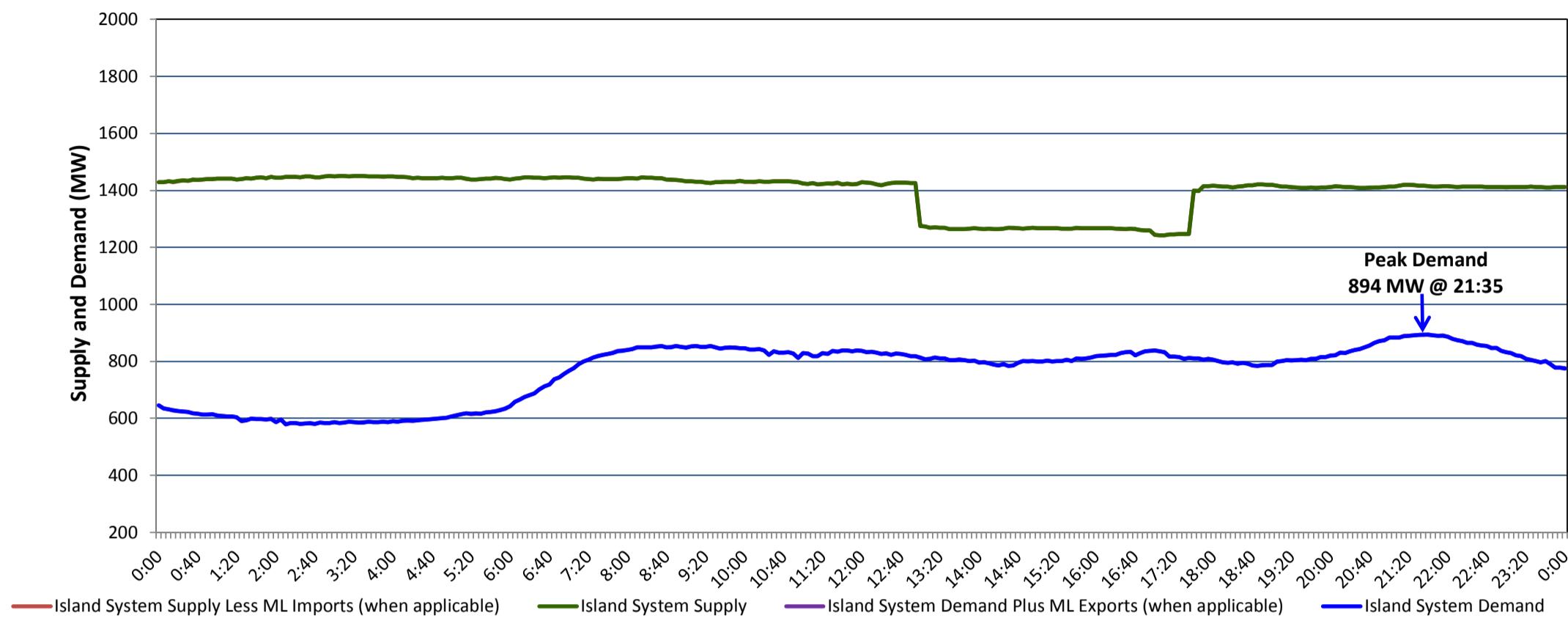


**Newfoundland Labrador Hydro (NLH)
Supply and Demand Status Report Filed Thursday, May 17, 2018**

**Section 1
Island Interconnected System Supply, Demand & Exports
Actual 24 Hour System Performance For Wednesday, May 16, 2018**



Supply Notes For May 16, 2018

- 1,2
- A As of 2115 hours, January 04, 2018, Stephenville Gas Turbine available at 25 MW (50 MW).
 - B As of 0801 hours, April 02, 2018, Holyrood Unit 3 unavailable due to planned outage 110 MW (150 MW).
 - C As of 0938 hours, April 26, 2018, Holyrood Unit 2 removed from service for economic dispatch 70 MW (170 MW).
 - D As of 1800 hours, April 29, 2018, Bay d'Espoir Unit 5 unavailable due to planned outage (76.5 MW).
 - E As of 0623 hours, May 08, 2018, Bay d'Espoir Unit 6 unavailable due to planned outage (76.5 MW).
 - F As of 1753 hours, May 13, 2018, Hardwoods Gas Turbine unavailable (50 MW).
 - G As of 0801 hours, May 15, 2018, St. Anthony Diesel Plant available at 7.7 MW (9.7 MW).
 - H As of 1325 hours, May 15, 2018, Holyrood Unit 1 available at 116 MW (170 MW).
 - I At 1300 hours, May 16, 2018, Bay d'Espoir Unit 3 unavailable due to planned outage (76.5 MW).
 - J At 1300 hours, May 16, 2018, Bay d'Espoir Unit 4 unavailable due to planned outage (76.5 MW).
 - K At 1740 hours, May 16, 2018, Bay d'Espoir Unit 3 available (76.5 MW).
 - L At 1740 hours, May 16, 2018, Bay d'Espoir Unit 4 available (76.5 MW).

**Section 2
Island Interconnected Supply and Demand**

Thu, May 17, 2018	Island System Outlook ³	Seven-Day Forecast	Temperature (°C)		Island System Daily Peak Demand (MW)	
			Morning	Evening	Forecast	Adjusted ⁷
Available Island System Supply: ⁵	1,380 MW	Thursday, May 17, 2018	5	8	1,005	1,005
NLH Generation: ⁴	1,090 MW	Friday, May 18, 2018	0	4	1,160	1,160
NLH Power Purchases: ⁶	110 MW	Saturday, May 19, 2018	2	8	1,015	1,015
Maritime Link Imports:	-	Sunday, May 20, 2018	6	4	945	945
Other Island Generation:	180 MW	Monday, May 21, 2018	5	7	980	980
Current St. John's Temperature & Windchill:	4 °C	Tuesday, May 22, 2018	4	7	1,025	1,025
7-Day Island Peak Demand Forecast:	1,160 MW	Wednesday, May 23, 2018	6	4	970	970

Supply Notes For May 17, 2018

- Notes:
1. Generation outages for running and corrective maintenance are included. These are not unusual for power system operations. They generally do not impact customer supply. The power system operators schedule outages to system equipment whenever possible to coincide with periods when customer demands are low and sufficient supply reserves are available. However, from time to time equipment outages are necessary and reserves may be impacted.
 2. Due to the Island System having no synchronous connections to the larger North American grid, when there is a sudden loss of large generating units some customer's load must be interrupted for short periods to bring generation output equal to customer demand. This automatic action of power system protection, referred to as under frequency load shedding, is necessary to ensure the integrity and reliability of system equipment. Under frequency events typically occur 5 to 8 times per year on the Island Interconnected System and the resultant customer load interruptions are generally less than 30 minutes.
 3. As of 0800 Hours.
 4. Gross output including station service at Holyrood (24.5 MW) and improved NLH hydraulic output due to water levels (35 MW).
 5. Gross output from all Island sources (including Note 4).
 6. NLH Power Purchases include: CBPP Co-Gen, Nalcor Exploits, Rattle Brook, Star Lake, Wind Generation, Vale capacity assistance (when applicable).
 7. Adjusted for CBPP, Vale and Praxair interruptible load, Maritime Link exports and the impact of voltage reduction, when applicable.

**Section 3
Island Peak Demand Information
Previous Day Actual Peak and Current Day Forecast Peak**

Wed, May 16, 2018	Actual Island Peak Demand ⁸	21:35	894 MW
Thu, May 17, 2018	Forecast Island Peak Demand		1,005 MW

- Notes: 8. Island Demand / ML Exports (where applicable) is supplied by NLH generation and purchases, plus generation owned and operated by Newfoundland Power and Corner Brook Pulp & Paper (Deer Lake Power, DLP).