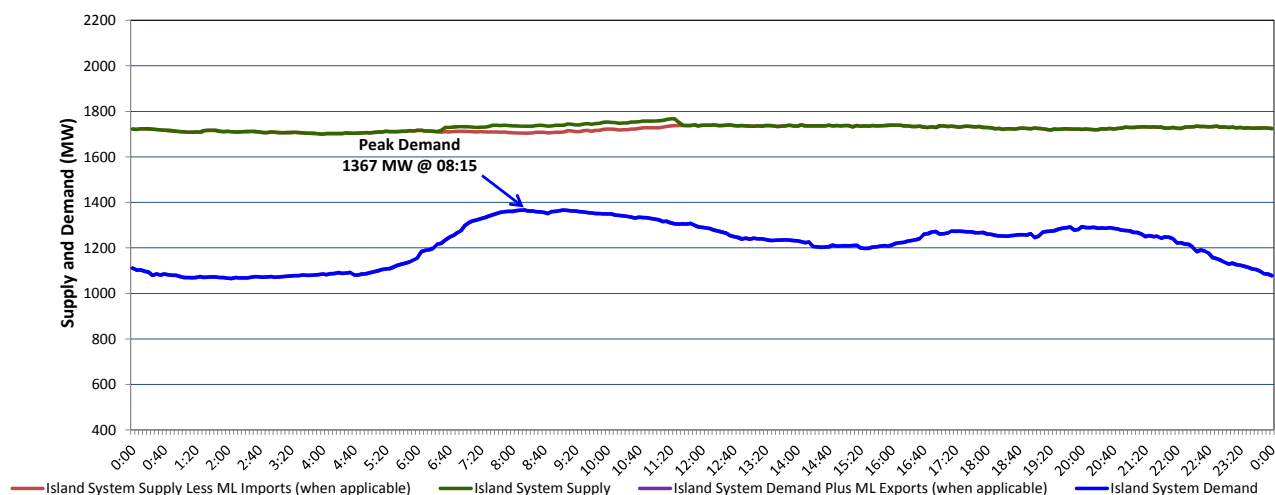


Newfoundland Labrador Hydro (NLH) Supply and Demand Status Report Filed Wednesday, March 21, 2018

Section 1 Island Interconnected System Supply, Demand & Exports Actual 24 Hour System Performance For Tuesday, March 20, 2018



Supply Notes For March 20, 2018

1,2

- A As of 2115 hours, January 04, 2018, Stephenville Gas Turbine available at 25 MW (50 MW).
- B As of 1733 hours, March 06, 2018, Holyrood Unit 2 available at 100 MW (170 MW).
- C As of 1337 hours, March 19, 2018, Holyrood Unit 1 unavailable 140 MW (170 MW).
- D As of 2245 hours, March 19, 2018, Holyrood Unit 3 available at 95 MW (150 MW).

Section 2 Island Interconnected Supply and Demand

Wed, Mar 21, 2018	Island System Outlook ³	Seven-Day Forecast	Temperature (°C)		Island System Daily Peak Demand (MW)	
			Morning	Evening	Forecast	Adjusted ⁷
Available Island System Supply: ⁵	1,705 MW	Wednesday, March 21, 2018	-1	-1	1,365	1,258
NLH Generation: ⁴	1,375 MW	Thursday, March 22, 2018	-1	4	1,350	1,243
NLH Power Purchases: ⁶	125 MW	Friday, March 23, 2018	2	0	1,280	1,174
Maritime Link Imports:	-	Saturday, March 24, 2018	0	-1	1,280	1,174
Other Island Generation:	205 MW	Sunday, March 25, 2018	-1	-2	1,360	1,253
Current St. John's Temperature & Windchill:	-2 °C	Monday, March 26, 2018	-4	-3	1,415	1,307
7-Day Island Peak Demand Forecast:	1,415 MW	Tuesday, March 27, 2018	1	-2	1,210	1,105

Supply Notes For March 21, 2018

3

- Notes:
1. Generation outages for running and corrective maintenance are included. These are not unusual for power system operations. They generally do not impact customer supply. The power system operators schedule outages to system equipment whenever possible to coincide with periods when customer demands are low and sufficient supply reserves are available. However, from time to time equipment outages are necessary and reserves may be impacted.
 2. Due to the Island System having no synchronous connections to the larger North American grid, when there is a sudden loss of large generating units some customer's load must be interrupted for short periods to bring generation output equal to customer demand. This automatic action of power system protection, referred to as under frequency load shedding, is necessary to ensure the integrity and reliability of system equipment. Under frequency events typically occur 5 to 8 times per year on the Island Interconnected System and the resultant customer load interruptions are generally less than 30 minutes.
 3. As of 0800 Hours.
 4. Gross output including station service at Holyrood (24.5 MW) and improved NLH hydraulic output due to water levels (35 MW).
 5. Gross output from all Island sources (including Note 4).
 6. NLH Power Purchases include: CBPP Co-Gen, Nalcor Exploits, Rattle Brook, Star Lake, Wind Generation, Vale capacity assistance (when applicable).
 7. Adjusted for CBP&P, Vale and Praxair interruptible load, Maritime Link Exports and the impact of voltage reduction (when applicable).

Section 3 Island Peak Demand Information Previous Day Actual Peak and Current Day Forecast Peak

Tue, Mar 20, 2018	Actual Island Peak Demand ⁸	8:15	1,367 MW
Wed, Mar 21, 2018	Forecast Island Peak Demand		1,365 MW

- Notes: 8. Island Demand / ML Exports (where applicable) is supplied by NLH generation and purchases, plus generation owned and operated by Newfoundland Power and Corner Brook Pulp & Paper (Deer Lake Power, DLP).