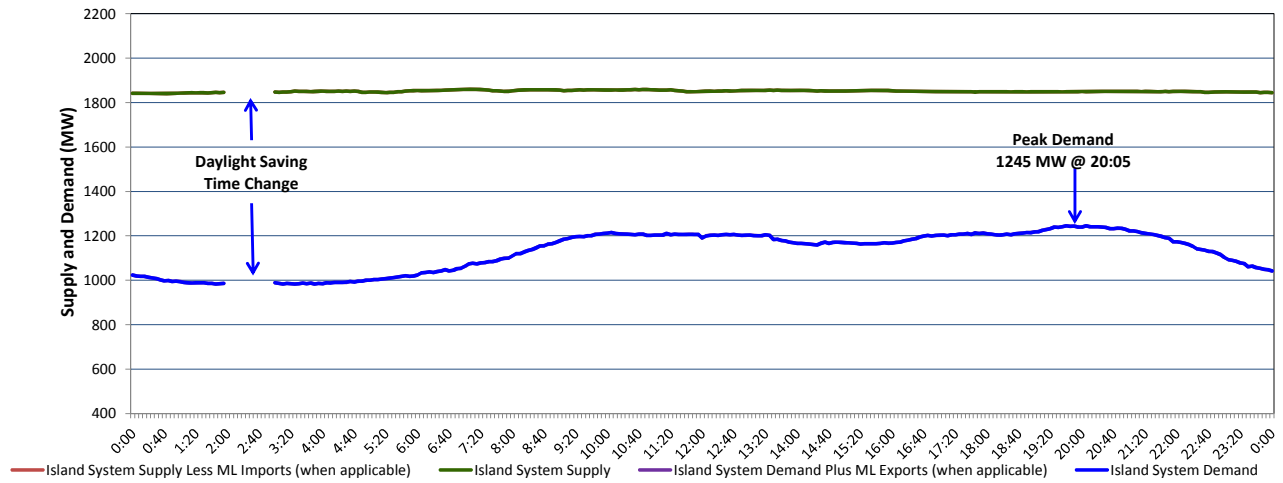


Newfoundland Labrador Hydro (NLH) Supply and Demand Status Report Filed Monday, March 12, 2018

Section 1 Island Interconnected System Supply, Demand & Exports Actual 24 Hour System Performance For Sunday, March 11, 2018



Supply Notes For March 11, 2018

1,2

- A As of 2115 hours, January 04, 2018, Stephenville Gas Turbine available at 25 MW (50 MW).
- B As of 0844 hours, March 01, 2018, Holyrood Unit 1 available at 148 MW (170 MW).
- C As of 0844 hours, March 01, 2018, Holyrood Unit 3 available at 100 MW (150 MW).
- D As of 1733 hours, March 06, 2018, Holyrood Unit 2 available at 100 MW (170 MW).

Section 2 Island Interconnected Supply and Demand

Mon, Mar 12, 2018	Island System Outlook ³	Seven-Day Forecast	Temperature (°C)		Island System Daily Peak Demand (MW)	
			Morning	Evening	Forecast	Adjusted ⁷
Available Island System Supply: ⁵	1,850 MW	Monday, March 12, 2018	-1	0	1,320	1,214
NLH Generation: ⁴	1,525 MW	Tuesday, March 13, 2018	0	-1	1,310	1,204
NLH Power Purchases: ⁶	115 MW	Wednesday, March 14, 2018	0	2	1,375	1,268
Maritime Link Imports:	- MW	Thursday, March 15, 2018	3	3	1,340	1,233
Other Island Generation:	210 MW	Friday, March 16, 2018	0	0	1,310	1,204
Current St. John's Temperature & Windchill:	-2 °C	Saturday, March 17, 2018	-2	-1	1,310	1,204
7-Day Island Peak Demand Forecast:	1,375 MW	Sunday, March 18, 2018	-2	0	1,225	1,120

Supply Notes For March 12, 2018

3

- Notes:
1. Generation outages for running and corrective maintenance are included. These are not unusual for power system operations. They generally do not impact customer supply. The power system operators schedule outages to system equipment whenever possible to coincide with periods when customer demands are low and sufficient supply reserves are available. However, from time to time equipment outages are necessary and reserves may be impacted.
 2. Due to the Island System having no synchronous connections to the larger North American grid, when there is a sudden loss of large generating units some customer's load must be interrupted for short periods to bring generation output equal to customer demand. This automatic action of power system protection, referred to as under frequency load shedding, is necessary to ensure the integrity and reliability of system equipment. Under frequency events typically occur 5 to 8 times per year on the Island Interconnected System and the resultant customer load interruptions are generally less than 30 minutes.
 3. As of 0800 Hours.
 4. Gross output including station service at Holyrood (24.5 MW) and improved NLH hydraulic output due to water levels (35 MW).
 5. Gross output from all Island sources (including Note 4).
 6. NLH Power Purchases include: CBPP Co-Gen, Nalcor Exploits, Rattle Brook, Star Lake, Wind Generation, Vale capacity assistance (when applicable).
 7. Adjusted for CBP&P, Vale and Praxair interruptible load, Maritime Link Exports and the impact of voltage reduction (when applicable).

Section 3 Island Peak Demand Information Previous Day Actual Peak and Current Day Forecast Peak

Sun, Mar 11, 2018	Actual Island Peak Demand ⁸	20:05	1,245 MW
Mon, Mar 12, 2018	Forecast Island Peak Demand		1,320 MW

- Notes: 8. Island Demand / ML Exports (where applicable) is supplied by NLH generation and purchases, plus generation owned and operated by Newfoundland Power and Corner Brook Pulp & Paper (Deer Lake Power, DLP).