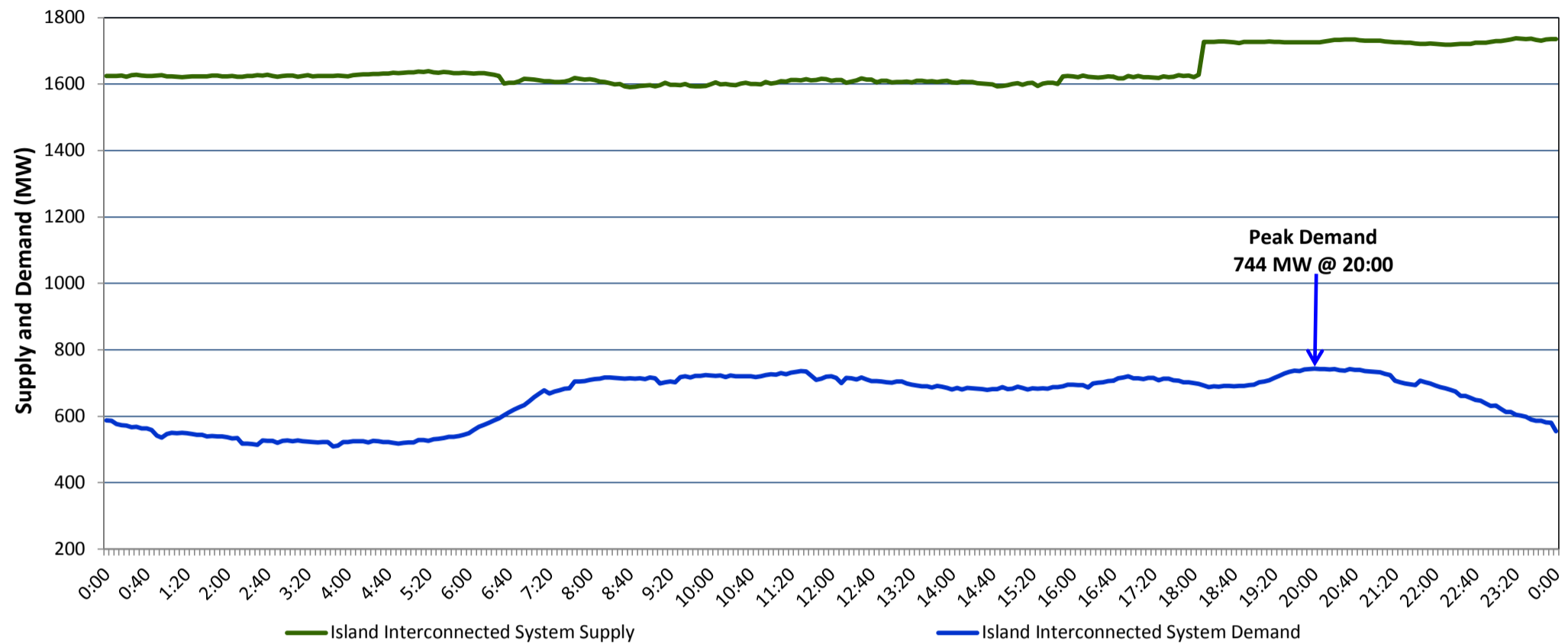


**Newfoundland Labrador Hydro (NLH)  
Supply and Demand Status Report Filed Friday, September 22, 2017**

**Section 1  
Island Interconnected System Supply and Demand  
Actual 24 Hour System Performance For Thursday, September 21, 2017**



**Supply Notes For September 21, 2017**

<sup>1,2</sup>

- A As of 0827 hours, July 31, 2017, Holyrood Unit 2 unavailable due to planned outage 165 MW (170 MW).
- B As of 1527 hours, September 17, 2017, Cat Arm Unit 1 unavailable due to planned outage (67 MW).
- C As of 2000 hours, September 17, 2017, Hawke's Bay Diesel Plant available at 2.5 MW due to a planned outage (5 MW).
- D At 0633 hours, September 21, 2017, Stephenville Gas Turbine unavailable due to planned outage 25 MW (50 MW).
- E At 1550 hours, September 21, 2017, Hardwoods Gas Turbine available at full capacity (50 MW).
- F At 1808 hours, September 21, 2017, Holyrood Unit 1 available at full capacity (170 MW).

**Section 2  
Island Interconnected Supply and Demand**

Fri, Sep 22, 2017	Island System Outlook <sup>3</sup>	Seven-Day Forecast	Temperature (°C)		Island System Daily Peak Demand (MW) Forecast
			Morning	Evening	
Available Island System Supply: <sup>5</sup>	1,705 MW	Friday, September 22, 2017	10	13	870
NLH Generation: <sup>4</sup>	1,405 MW	Saturday, September 23, 2017	13	14	805
NLH Power Purchases: <sup>6</sup>	105 MW	Sunday, September 24, 2017	10	10	890
Other Island Generation:	195 MW	Monday, September 25, 2017	10	7	940
Current St. John's Temperature:	8 °C	Tuesday, September 26, 2017	7	9	965
Current St. John's Windchill:	N/A °C	Wednesday, September 27, 2017	7	7	1,015
7-Day Island Peak Demand Forecast:	1,015 MW	Thursday, September 28, 2017	9	13	970

**Supply Notes For September 22, 2017**

<sup>3</sup>

- Notes:
1. Generation outages for running and corrective maintenance are included. These are not unusual for power system operations. They generally do not impact customer supply. The power system operators schedule outages to system equipment whenever possible to coincide with periods when customer demands are low and sufficient supply reserves are available. However, from time to time equipment outages are necessary and reserves may be impacted.
  2. Due to the Island Interconnected System being isolated from the larger North American grid, when there is a sudden loss of large generating units some customer's load must be interrupted for short periods to bring generation output equal to customer demand. This automatic action of power system protection, referred to as under frequency load shedding, is necessary to ensure the integrity and reliability of system equipment. Under frequency events typically occur 5 to 8 times per year on the Island Interconnected System and the resultant customer load interruptions are generally less than 30 minutes.
  3. As of 0800 Hours.
  4. Gross output including station service at Holyrood (24.5 MW) and improved NLH hydraulic output due to water levels (35 MW).
  5. Gross output from all Island sources (including Note 4).
  6. NLH Power Purchases include: CBPP Co-Gen, Nalcor Exploits, Rattle Brook, Star Lake, Vale capacity assistance (when applicable), and Wind Generation.

**Section 3  
Island Peak Demand Information  
Previous Day Actual Peak and Current Day Forecast Peak**

Thu, Sep 21, 2017	Actual Island Peak Demand <sup>8</sup>	20:00	744 MW
Fri, Sep 22, 2017	Forecast Island Peak Demand		870 MW

Notes: 8. Island Demand is supplied by NLH generation and purchases, plus generation owned and operated by Newfoundland Power and Corner Brook Pulp & Paper (Deer Lake Power, DLP).