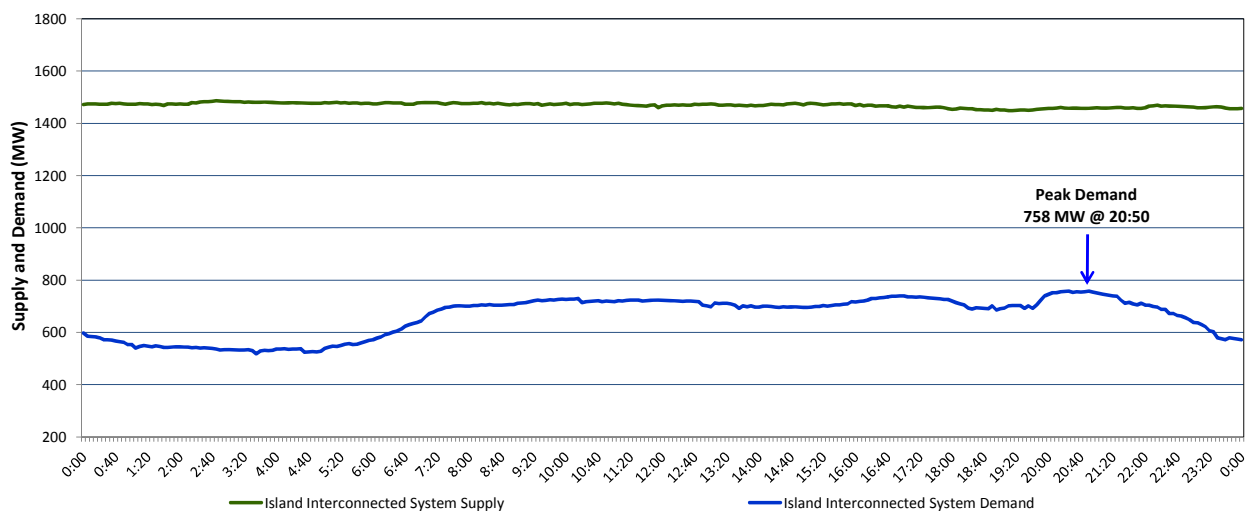


## Newfoundland Labrador Hydro (NLH) Supply and Demand Status Report Filed Thursday, September 07, 2017

### Section 1 Island Interconnected System Supply and Demand Actual 24 Hour System Performance For Wednesday, September 06, 2017



#### Supply Notes For September 06, 2017 <sup>1,2</sup>

- A** As of 1858 hours, June 22, 2017, Stephenville Gas Turbine available at 25 MW (50 MW).
- B** As of 0938 hours, June 23, 2017, Holyrood Unit 1 unavailable due to planned outage 120 MW (170 MW).
- C** As of 0827 hours, July 31, 2017, Holyrood Unit 2 unavailable due to planned outage 165 MW (170 MW).
- D** As of 0828 hours, August 27, 2017, Bay d'Espoir Unit 7 unavailable due to planned outage (154.4 MW).
- E** As of 1704 hours, August 31, 2017, Hardwoods Gas Turbine available at 25 MW (50 MW).
- F** As of 1624 hours, September 03, 2017, Hawke's Bay Diesel Plant available at 2.5 MW due to a planned outage (5 MW).
- G** As of 0759 hours, September 05, 2017, Paradise River Unit unavailable due to planned outage (8 MW).

### Section 2 Island Interconnected Supply and Demand

Thu, Sep 07, 2017	Island System Outlook <sup>3</sup>	Seven-Day Forecast	Temperature (°C)		Island System Daily Peak Demand (MW) Forecast
			Morning	Evening	
Available Island System Supply: <sup>5</sup>	<b>1,445</b> MW	Thursday, September 07, 2017	20	21	<b>810</b>
NLH Generation: <sup>4</sup>	1,140 MW	Friday, September 08, 2017	21	17	820
NLH Power Purchases: <sup>6</sup>	115 MW	Saturday, September 09, 2017	15	12	795
Other Island Generation:	190 MW	Sunday, September 10, 2017	14	15	795
Current St. John's Temperature:	21 °C	Monday, September 11, 2017	11	10	905
Current St. John's Windchill:	N/A °C	Tuesday, September 12, 2017	9	11	920
7-Day Island Peak Demand Forecast:	<b>920</b> MW	Wednesday, September 13, 2017	13	12	835

#### Supply Notes For September 07, 2017 <sup>3</sup>

- Notes:
1. Generation outages for running and corrective maintenance are included. These are not unusual for power system operations. They generally do not impact customer supply. The power system operators schedule outages to system equipment whenever possible to coincide with periods when customer demands are low and sufficient supply reserves are available. However, from time to time equipment outages are necessary and reserves may be impacted.
  2. Due to the Island Interconnected System being isolated from the larger North American grid, when there is a sudden loss of large generating units some customer's load must be interrupted for short periods to bring generation output equal to customer demand. This automatic action of power system protection, referred to as under frequency load shedding, is necessary to ensure the integrity and reliability of system equipment. Under frequency events typically occur 5 to 8 times per year on the Island Interconnected System and the resultant customer load interruptions are generally less than 30 minutes.
  3. As of 0800 Hours.
  4. Gross output including station service at Holyrood (24.5 MW) and improved NLH hydraulic output due to water levels (35 MW).
  5. Gross output from all Island sources (including Note 4).
  6. NLH Power Purchases include: CBPP Co-Gen, Nalcor Exploits, Rattle Brook, Star Lake, Vale capacity assistance (when applicable), and Wind Generation.

### Section 3 Island Peak Demand Information Previous Day Actual Peak and Current Day Forecast Peak

Wed, Sep 06, 2017	Actual Island Peak Demand <sup>8</sup>	20:50	758 MW
Thu, Sep 07, 2017	Forecast Island Peak Demand		810 MW

- Notes: <sup>8</sup> Island Demand is supplied by NLH generation and purchases, plus generation owned and operated by Newfoundland Power and Corner Brook Pulp & Paper (Deer Lake Power, DLP).