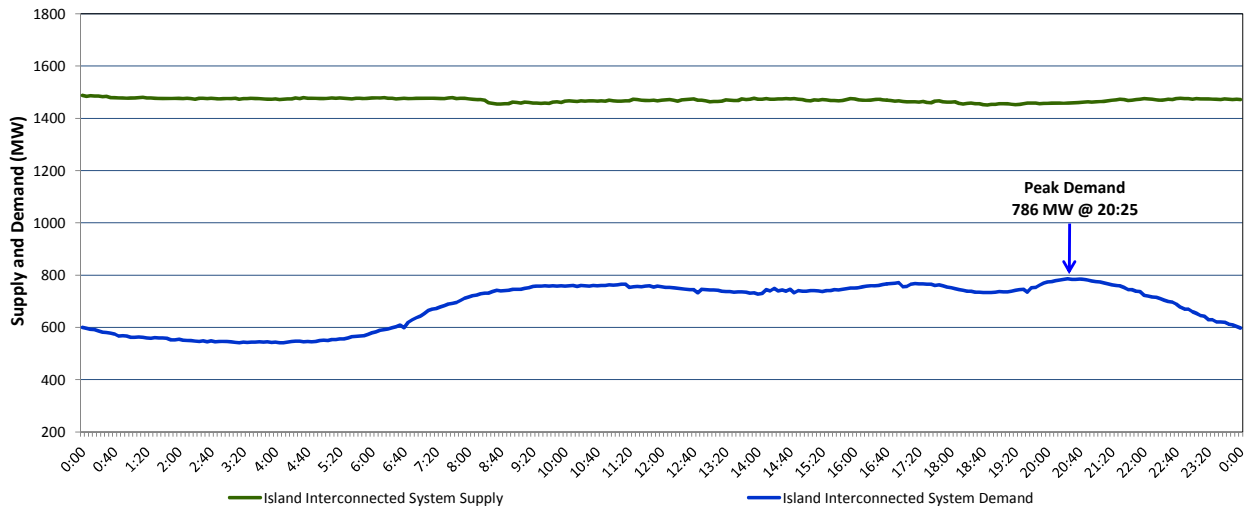


**Newfoundland Labrador Hydro (NLH)
Supply and Demand Status Report Filed Wednesday, September 06, 2017**

**Section 1
Island Interconnected System Supply and Demand
Actual 24 Hour System Performance For Tuesday, September 05, 2017**



Supply Notes For September 05, 2017

- A As of 1858 hours, June 22, 2017, Stephenville Gas Turbine available at 25 MW (50 MW).
- B As of 0938 hours, June 23, 2017, Holyrood Unit 1 unavailable due to planned outage 120 MW (170 MW).
- C As of 0827 hours, July 31, 2017, Holyrood Unit 2 unavailable due to planned outage 165 MW (170 MW).
- D As of 0828 hours, August 27, 2017, Bay d'Espoir Unit 7 unavailable due to planned outage (154.4 MW).
- E As of 1704 hours, August 31, 2017, Hardwoods Gas Turbine available at 25 MW (50 MW).
- F As of 1624 hours, September 03, 2017, Hawke's Bay Diesel Plant available at 2.5 MW due to a planned outage (5 MW).
- G **At 0759 hours, September 05, 2017, Paradise River Unit unavailable due to planned outage (8 MW).**

**Section 2
Island Interconnected Supply and Demand**

Wed, Sep 06, 2017	Island System Outlook ³	Seven-Day Forecast	Temperature (°C)		Island System Daily Peak Demand (MW) Forecast
			Morning	Evening	
Available Island System Supply: ⁵	1,460 MW	Wednesday, September 06, 2017	18	19	800
NLH Generation: ⁴	1,140 MW	Thursday, September 07, 2017	21	21	810
NLH Power Purchases: ⁶	130 MW	Friday, September 08, 2017	22	19	810
Other Island Generation:	190 MW	Saturday, September 09, 2017	16	14	790
Current St. John's Temperature:	17 °C	Sunday, September 10, 2017	17	16	795
Current St. John's Windchill:	N/A °C	Monday, September 11, 2017	13	13	870
7-Day Island Peak Demand Forecast:	870 MW	Tuesday, September 12, 2017	13	12	810

Supply Notes For September 06, 2017

- Notes:
- Generation outages for running and corrective maintenance are included. These are not unusual for power system operations. They generally do not impact customer supply. The power system operators schedule outages to system equipment whenever possible to coincide with periods when customer demands are low and sufficient supply reserves are available. However, from time to time equipment outages are necessary and reserves may be impacted.
 - Due to the Island Interconnected System being isolated from the larger North American grid, when there is a sudden loss of large generating units some customer's load must be interrupted for short periods to bring generation output equal to customer demand. This automatic action of power system protection, referred to as under frequency load shedding, is necessary to ensure the integrity and reliability of system equipment. Under frequency events typically occur 5 to 8 times per year on the Island Interconnected System and the resultant customer load interruptions are generally less than 30 minutes.
 - As of 0800 Hours.
 - Gross output including station service at Holyrood (24.5 MW) and improved NLH hydraulic output due to water levels (35 MW).
 - Gross output from all Island sources (including Note 4).
 - NLH Power Purchases include: CBPP Co-Gen, Nalcor Exploits, Rattle Brook, Star Lake, Vale capacity assistance (when applicable), and Wind Generation.

**Section 3
Island Peak Demand Information
Previous Day Actual Peak and Current Day Forecast Peak**

Tue, Sep 05, 2017	Actual Island Peak Demand ⁸	20:25	786 MW
Wed, Sep 06, 2017	Forecast Island Peak Demand		800 MW

Notes: 8. Island Demand is supplied by NLH generation and purchases, plus generation owned and operated by Newfoundland Power and Corner Brook Pulp & Paper (Deer Lake Power, DLP).