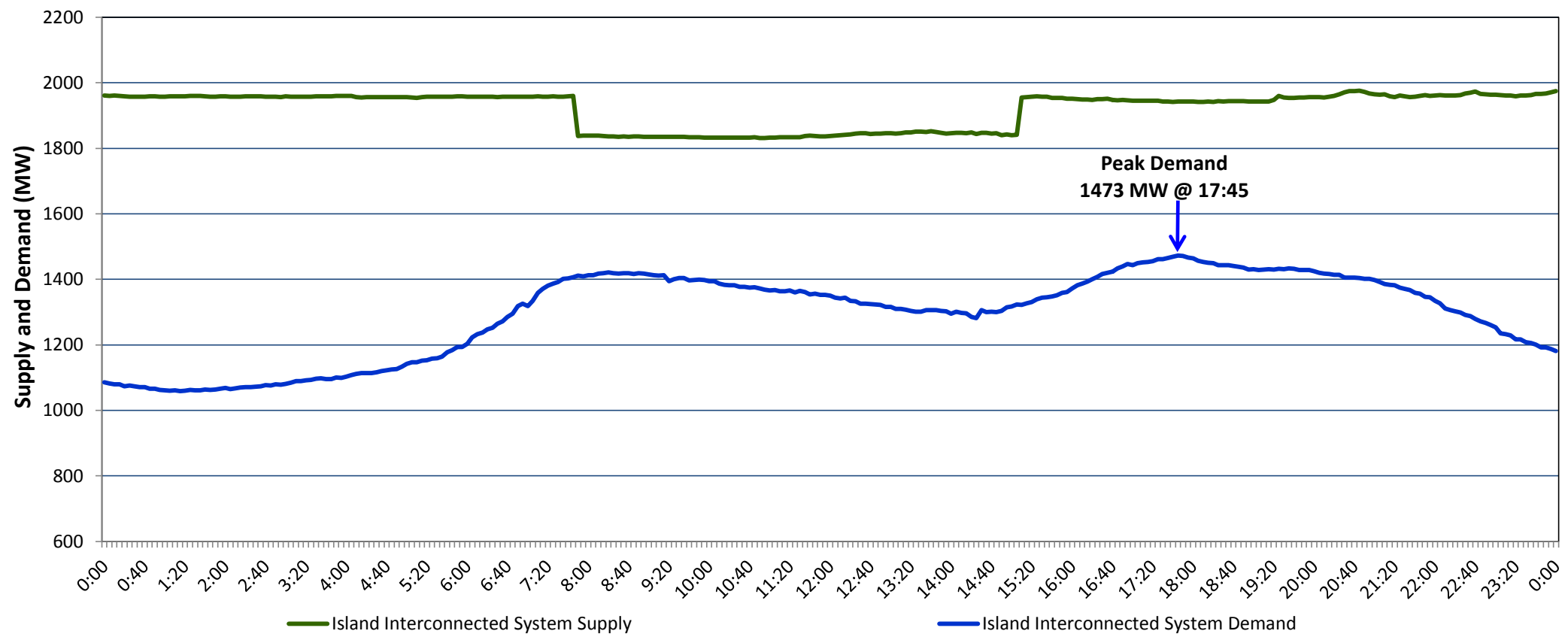


**Newfoundland Labrador Hydro (NLH)
Supply and Demand Status Report Filed Wednesday, February 01, 2017**

**Section 1
Island Interconnected System Supply and Demand
Actual 24 Hour System Performance For Tuesday, January 31, 2017**



Supply Notes For January 31, 2017

1,2

- A As of 1556 hours, January 20, 2017, Holyrood Unit 2 available at 150 MW (170 MW).
- B As of 1047 hours, January 24, 2017, Stephenville Gas Turbine available at 25 MW (50 MW).
- C As of 2107 hours, January 27, 2017, Holyrood Unit 1 available at 160 MW (170 MW).
- D At 0749 hours, January 31, 2017, Holyrood Combustion Turbine unavailable due to planned outage (123.5 MW).
- E At 1444 hours, January 31, 2017, Holyrood Diesels Units 4, 5, and 6 unavailable. Net impact to the Island Interconnected System is 4 MW.
- F At 1506 hours, January 31, 2017, Holyrood Combustion Turbine available (123.5 MW).
- G At 2028 hours, January 31, 2017, Holyrood Diesels Unit 6 available. Net gain to the Island Interconnected System is 2 MW.

**Section 2
Island Interconnected Supply and Demand**

Wed, Feb 01, 2017	Island System Outlook ³	Seven-Day Forecast	Temperature (°C)		Island System Daily Peak Demand (MW)	
			Morning	Evening	Forecast	Adjusted ⁷
Available Island System Supply: ⁵	1,945 MW	Wednesday, February 01, 2017	-9	-7	1,545	1,436
NLH Generation: ⁴	1,635 MW	Thursday, February 02, 2017	-8	-7	1,545	1,436
NLH Power Purchases: ⁶	100 MW	Friday, February 03, 2017	-7	-6	1,560	1,451
Other Island Generation:	210 MW	Saturday, February 04, 2017	-10	-7	1,575	1,466
Current St. John's Temperature:	-11 °C	Sunday, February 05, 2017	-11	-11	1,645	1,535
Current St. John's Windchill:	-19 °C	Monday, February 06, 2017	-9	-3	1,555	1,446
7-Day Island Peak Demand Forecast:	1,675 MW	Tuesday, February 07, 2017	0	-11	1,675	1,564

Supply Notes For February 01, 2017

3

- Notes:
1. Generation outages for running and corrective maintenance are included. These are not unusual for power system operations. They generally do not impact customer supply. The power system operators schedule outages to system equipment whenever possible to coincide with periods when customer demands are low and sufficient supply reserves are available. However, from time to time equipment outages are necessary and reserves may be impacted.
 2. Due to the Island Interconnected System being isolated from the larger North American grid, when there is a sudden loss of large generating units some customer's load must be interrupted for short periods to bring generation output equal to customer demand. This automatic action of power system protection, referred to as under frequency load shedding, is necessary to ensure the integrity and reliability of system equipment. Under frequency events typically occur 5 to 8 times per year on the Island Interconnected System and the resultant customer load interruptions are generally less than 30 minutes.
 3. As of 0800 Hours.
 4. Gross output including station service at Holyrood (24.5 MW) and improved NLH hydraulic output due to water levels (35 MW).
 5. Gross output from all Island sources (including Note 4).
 6. NLH Power Purchases include: CBPP Co-Gen, Nalcor Exploits, Rattle Brook, Star Lake, Vale capacity assistance (when applicable), and Wind Generation.
 7. Adjusted for CBP&P, Praxair and Vale interruptible load as well as the impact of voltage reduction, when applicable.

**Section 3
Island Peak Demand Information
Previous Day Actual Peak and Current Day Forecast Peak**

Tue, Jan 31, 2017	Actual Island Peak Demand ⁸	17:45	1,473 MW
Wed, Feb 01, 2017	Forecast Island Peak Demand		1,545 MW

Notes: 8. Island Demand is supplied by NLH generation and purchases, plus generation owned and operated by Newfoundland Power and Corner Brook Pulp & Paper (Deer Lake Power, DLP).