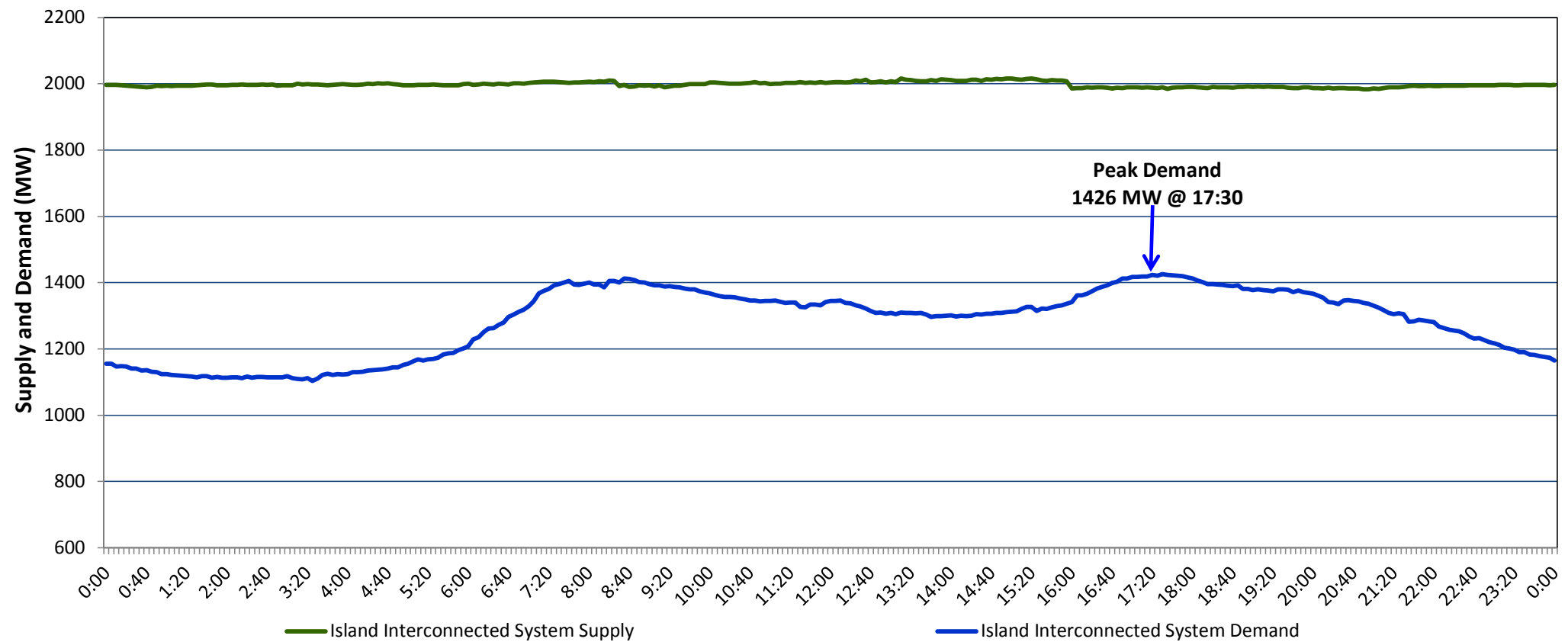


**Newfoundland Labrador Hydro (NLH)
Supply and Demand Status Report Filed Monday, January 23, 2017**

**Section 1
Island Interconnected System Supply and Demand
Actual 24 Hour System Performance For Friday, January 20, 2017**



Supply Notes For January 20, 2017

1,2

- A As of 1321 hours, January 12, 2017, Stephenville Gas Turbine available at 38 MW (50 MW).
 B At 0827 hours, January 20, 2017, Holyrood Unit 1 available at 145 MW (170 MW).
 C At 1556 hours, January 20, 2017, Holyrood Unit 2 available at 150 MW (170 MW).

**Section 2
Island Interconnected Supply and Demand**

| Sat, Jan 21, 2017 | Island System Outlook ³ | Seven-Day Forecast | Temperature (°C) | | Island System Daily Peak Demand (MW) | |
|--|------------------------------------|-----------------------------|------------------|---------|--------------------------------------|-----------------------|
| | | | Morning | Evening | Forecast | Adjusted ⁷ |
| Available Island System Supply: ⁵ | 1,980 MW | Saturday, January 21, 2017 | -1 | -3 | 1,495 | 1,393 |
| NLH Generation: ⁴ | 1,635 MW | Sunday, January 22, 2017 | -5 | -3 | 1,495 | 1,393 |
| NLH Power Purchases: ⁶ | 135 MW | Monday, January 23, 2017 | -8 | -9 | 1,605 | 1,501 |
| Other Island Generation: | 210 MW | Tuesday, January 24, 2017 | -7 | -5 | 1,515 | 1,412 |
| Current St. John's Temperature: | -3 °C | Wednesday, January 25, 2017 | -3 | -1 | 1,510 | 1,407 |
| Current St. John's Windchill: | -12 °C | Thursday, January 26, 2017 | 2 | 1 | 1,355 | 1,254 |
| 7-Day Island Peak Demand Forecast: | 1,605 MW | Friday, January 27, 2017 | 0 | 0 | 1,355 | 1,254 |

Supply Notes For January 21, 2017

3

- Notes:
1. Generation outages for running and corrective maintenance are included. These are not unusual for power system operations. They generally do not impact customer supply. The power system operators schedule outages to system equipment whenever possible to coincide with periods when customer demands are low and sufficient supply reserves are available. However, from time to time equipment outages are necessary and reserves may be impacted.
 2. Due to the Island Interconnected System being isolated from the larger North American grid, when there is a sudden loss of large generating units some customer's load must be interrupted for short periods to bring generation output equal to customer demand. This automatic action of power system protection, referred to as under frequency load shedding, is necessary to ensure the integrity and reliability of system equipment. Under frequency events typically occur 5 to 8 times per year on the Island Interconnected System and the resultant customer load interruptions are generally less than 30 minutes.
 3. As of 0800 Hours.
 4. Gross output including station service at Holyrood (24.5 MW) and improved NLH hydraulic output due to water levels (35 MW).
 5. Gross output from all Island sources (including Note 4).
 6. NLH Power Purchases include: CBPP Co-Gen, Nalcor Exploits, Rattle Brook, Star Lake, Vale capacity assistance (when applicable), and Wind Generation.
 7. Adjusted for CBP&P and Praxair interruptible load as well as the impact of voltage reduction, when applicable.

**Section 3
Island Peak Demand Information
Previous Day Actual Peak and Current Day Forecast Peak**

| | | | |
|-------------------|--|-------|----------|
| Fri, Jan 20, 2017 | Actual Island Peak Demand ⁸ | 17:30 | 1,426 MW |
| Sat, Jan 21, 2017 | Forecast Island Peak Demand | | 1,495 MW |

- Notes: 8. Island Demand is supplied by NLH generation and purchases, plus generation owned and operated by Newfoundland Power and Corner Brook Pulp & Paper (Deer Lake Power, DLP).