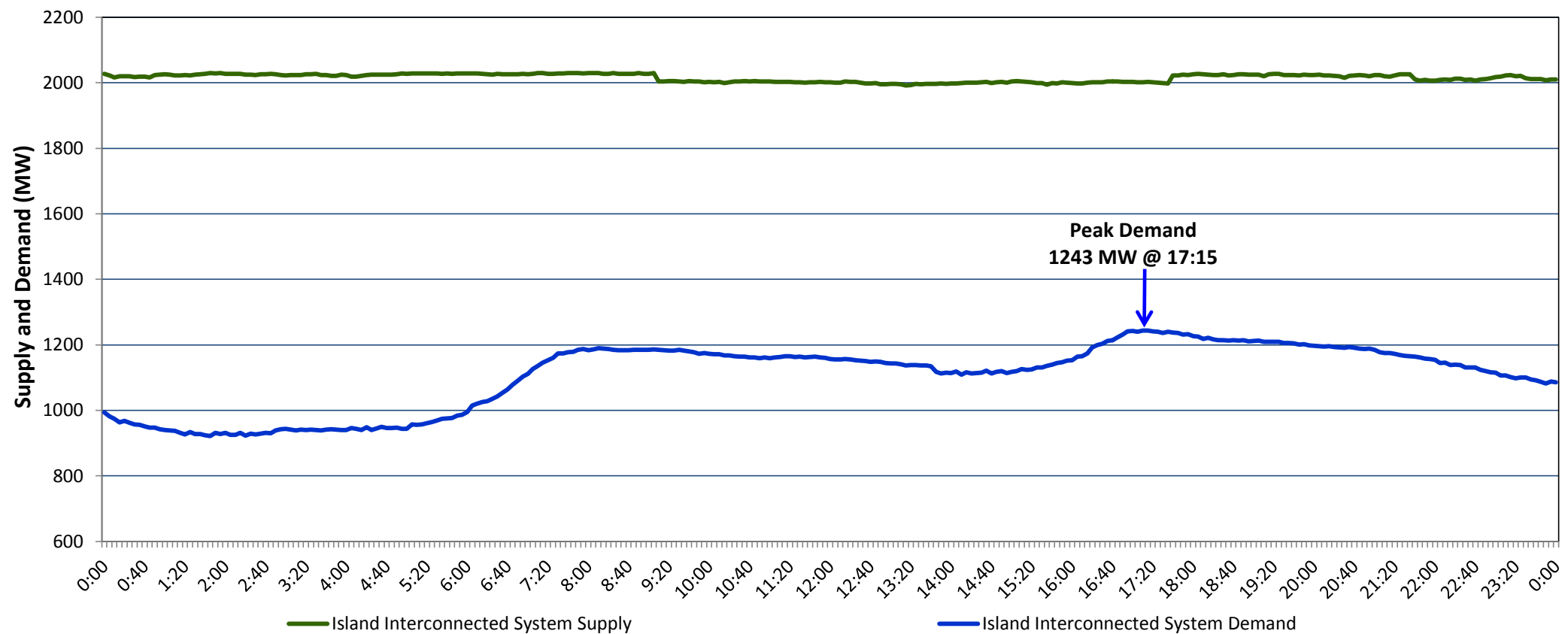


Newfoundland Labrador Hydro (NLH) Supply and Demand Status Report Filed Monday, January 16, 2017

Section 1 Island Interconnected System Supply and Demand Actual 24 Hour System Performance For Friday, January 13, 2017



Supply Notes For January 13, 2017

1,2

- A** As of 1956 hours, January 14, 2016, Nalcor Exploits Grand Falls Unit 7 unavailable. No net impact to the Island Interconnected System.
- B** As of 1719 hours, September 09, 2016, Nalcor Exploits Bishop's Falls plant unit 9 unavailable. No net impact to the Island Interconnected System.
- C** As of 2132 hours, October 10, 2016, Nalcor Exploits Bishop's Falls plant unit 8 unavailable. No net impact to the Island Interconnected System.
- D** As of 1920 hours, December 29, 2016, Holyrood Unit 1 available at 160 MW (170 MW).
- E** As of 1321 hours, January 12, 2017, Stephenville Gas Turbine End A available at 19 MW (25 MW).
- F** At 0910 hours, January 13, 2017, Hardwoods Gas Turbine End B unavailable (25 MW).
- G** At 1739 hours, January 13, 2017, Hardwoods Gas Turbine End B available (25 MW).

Section 2 Island Interconnected Supply and Demand

Sat, Jan 14, 2017	Island System Outlook ³		Seven-Day Forecast		Temperature (°C)		Island System Daily Peak Demand (MW)	
					Morning	Evening	Forecast	Adjusted ⁷
Available Island System Supply: ⁵	2,025	MW	Saturday, January 14, 2017	-8	-11	1,635	1,531	
NLH Generation: ⁴	1,670	MW	Sunday, January 15, 2017	-10	-5	1,560	1,457	
NLH Power Purchases: ⁶	160	MW	Monday, January 16, 2017	-10	-11	1,660	1,556	
Other Island Generation:	195	MW	Tuesday, January 17, 2017	-7	-10	1,665	1,561	
Current St. John's Temperature:	-10	°C	Wednesday, January 18, 2017	-7	-6	1,570	1,467	
Current St. John's Windchill:	-20	°C	Thursday, January 19, 2017	-1	2	1,500	1,397	
7-Day Island Peak Demand Forecast:	1,665	MW	Friday, January 20, 2017	2	0	1,350	1,249	

Supply Notes For January 14, 2017

3

- Notes:**
1. Generation outages for running and corrective maintenance are included. These are not unusual for power system operations. They generally do not impact customer supply. The power system operators schedule outages to system equipment whenever possible to coincide with periods when customer demands are low and sufficient supply reserves are available. However, from time to time equipment outages are necessary and reserves may be impacted.
 2. Due to the Island Interconnected System being isolated from the larger North American grid, when there is a sudden loss of large generating units some customer's load must be interrupted for short periods to bring generation output equal to customer demand. This automatic action of power system protection, referred to as under frequency load shedding, is necessary to ensure the integrity and reliability of system equipment. Under frequency events typically occur 5 to 8 times per year on the Island Interconnected System and the resultant customer load interruptions are generally less than 30 minutes.
 3. As of 0800 Hours.
 4. Gross output including station service at Holyrood (24.5 MW) and improved NLH hydraulic output due to water levels (35 MW).
 5. Gross output from all Island sources (including Note 4).
 6. NLH Power Purchases include: CBPP Co-Gen, Nalcor Exploits, Rattle Brook, Star Lake, Vale capacity assistance (when applicable), and Wind Generation.
 7. Adjusted for CBP&P and Praxair interruptible load as well as the impact of voltage reduction, when applicable.

Section 3 Island Peak Demand Information Previous Day Actual Peak and Current Day Forecast Peak

Fri, Jan 13, 2017	Actual Island Peak Demand ⁸	17:15	1,243 MW
Sat, Jan 14, 2017	Forecast Island Peak Demand		1,635 MW

- Notes:** 8. Island Demand is supplied by NLH generation and purchases, plus generation owned and operated by Newfoundland Power and Corner Brook Pulp & Paper (Deer Lake Power, DLP).