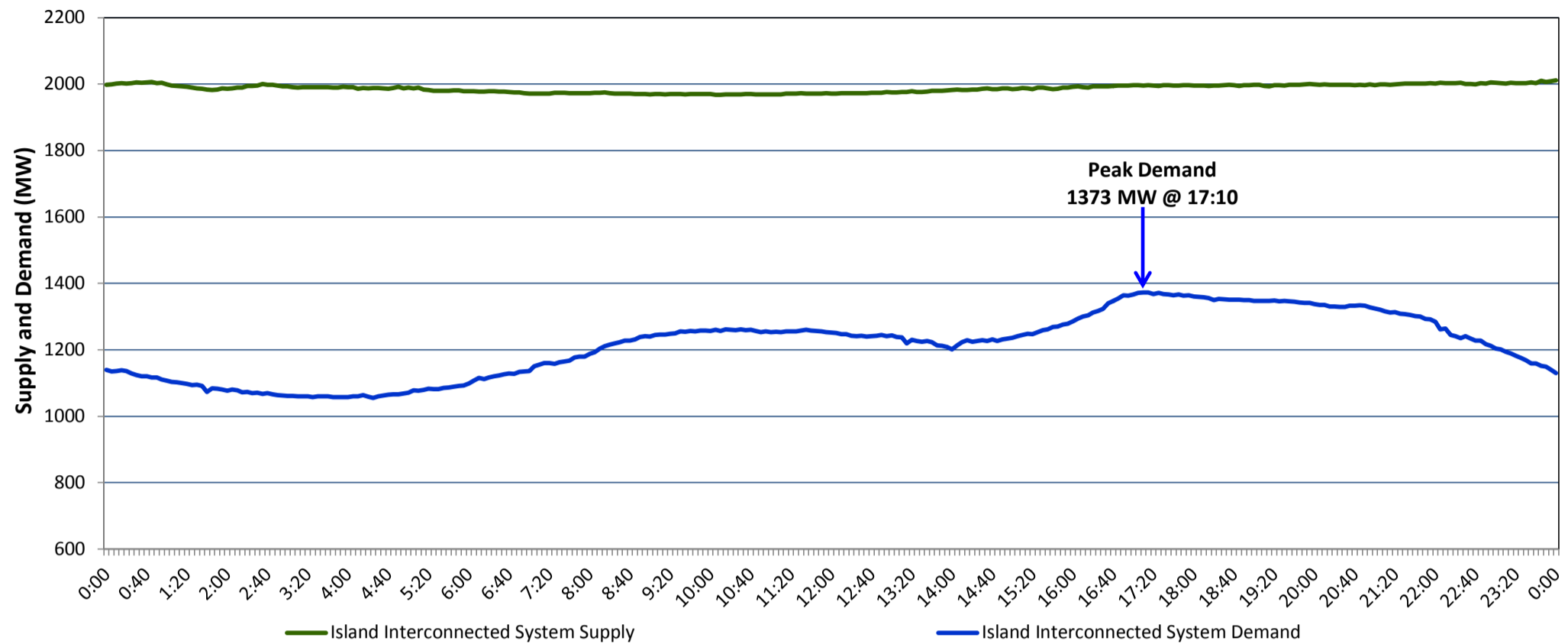


**Newfoundland Labrador Hydro (NLH)  
Supply and Demand Status Report Filed Tuesday, January 03, 2017**

**Section 1  
Island Interconnected System Supply and Demand  
Actual 24 Hour System Performance For Sunday, January 01, 2017**



**Supply Notes For January 01, 2017**

1,2

- A As of 1956 hours, January 14, 2016, Nalcor Exploits Grand Falls Unit 7 unavailable. No net impact to the Island Interconnected System.
- B As of 1526 hours, March 26, 2016, Stephenville Gas Turbine End A unavailable (25 MW).
- C As of 1719 hours, September 09, 2016, Nalcor Exploits Bishop's Falls plant unit 9 unavailable. No net impact to the Island Interconnected System.
- D As of 2132 hours, October 10, 2016, Nalcor Exploits Bishop's Falls plant unit 8 unavailable. No net impact to the Island Interconnected System.
- E As of 1920 hours, December 29, 2016, Holyrood Unit 1 derated to 160 MW (170 MW).

**Section 2  
Island Interconnected Supply and Demand**

Mon, Jan 02, 2017	Island System Outlook <sup>3</sup>	Seven-Day Forecast	Temperature (°C)		Island System Daily Peak Demand (MW)	
			Morning	Evening	Forecast	Adjusted <sup>7</sup>
Available Island System Supply: <sup>5</sup>	2,010 MW	Monday, January 02, 2017	-1	-1	1,395	1,299
NLH Generation: <sup>4</sup>	1,660 MW	Tuesday, January 03, 2017	-2	-5	1,550	1,452
NLH Power Purchases: <sup>6</sup>	140 MW	Wednesday, January 04, 2017	-4	-1	1,505	1,407
Other Island Generation:	210 MW	Thursday, January 05, 2017	4	1	1,365	1,269
Current St. John's Temperature:	-1 °C	Friday, January 06, 2017	-2	0	1,405	1,309
Current St. John's Windchill:	-7 °C	Saturday, January 07, 2017	-3	-3	1,460	1,363
7-Day Island Peak Demand Forecast:	1,550 MW	Sunday, January 08, 2017	-6	-1	1,490	1,393

**Supply Notes For January 02, 2017**

3

- Notes:
1. Generation outages for running and corrective maintenance are included. These are not unusual for power system operations. They generally do not impact customer supply. The power system operators schedule outages to system equipment whenever possible to coincide with periods when customer demands are low and sufficient supply reserves are available. However, from time to time equipment outages are necessary and reserves may be impacted.
  2. Due to the Island Interconnected System being isolated from the larger North American grid, when there is a sudden loss of large generating units some customer's load must be interrupted for short periods to bring generation output equal to customer demand. This automatic action of power system protection, referred to as under frequency load shedding, is necessary to ensure the integrity and reliability of system equipment. Under frequency events typically occur 5 to 8 times per year on the Island Interconnected System and the resultant customer load interruptions are generally less than 30 minutes.
  3. As of 0800 Hours.
  4. Gross output including station service at Holyrood (24.5 MW) and improved NLH hydraulic output due to water levels (35 MW).
  5. Gross output from all Island sources (including Note 4).
  6. NLH Power Purchases include: CBPP Co-Gen, Nalcor Exploits, Rattle Brook, Star Lake, Vale capacity assistance (when applicable), and Wind Generation.
  7. Adjusted for CBP&P interruptible load and the impact of voltage reduction, when applicable.

**Section 3  
Island Peak Demand Information  
Previous Day Actual Peak and Current Day Forecast Peak**

Sun, Jan 01, 2017	Actual Island Peak Demand <sup>8</sup>	17:10	1,373 MW
Mon, Jan 02, 2017	Forecast Island Peak Demand		1,395 MW

- Notes: 8. Island Demand is supplied by NLH generation and purchases, plus generation owned and operated by Newfoundland Power and Corner Brook Pulp & Paper (Deer Lake Power, DLP).