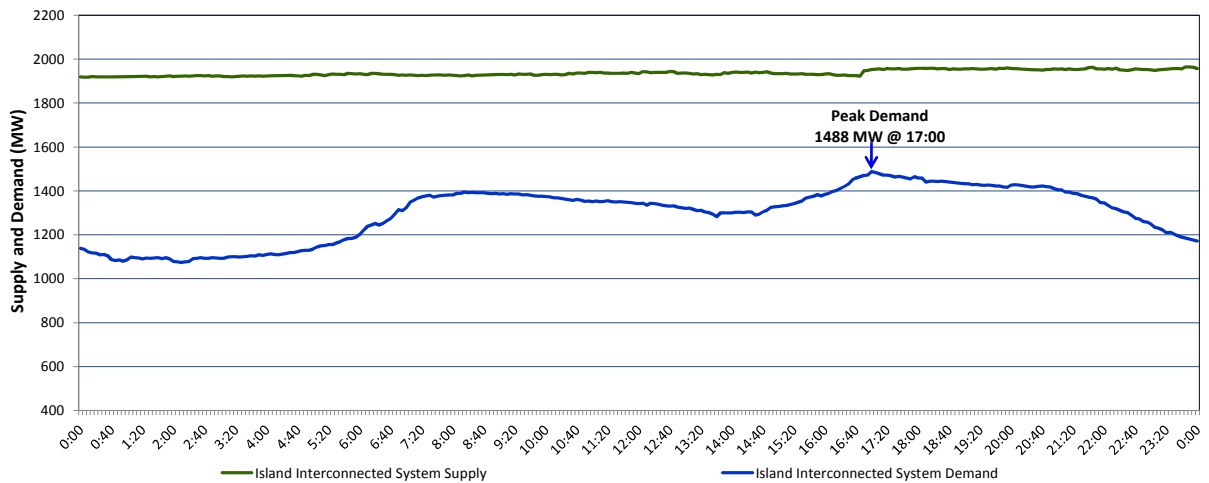


## Newfoundland Labrador Hydro (NLH) Supply and Demand Status Report Filed Wednesday, December 07, 2016

### Section 1 Island Interconnected System Supply and Demand Actual 24 Hour System Performance For Tuesday, December 06, 2016



#### Supply Notes For December 06, 2016

- A** As of 1956 hours, January 14, 2016, Nalcor Exploits Grand Falls Unit 7 unavailable. No net impact to the Island Interconnected System.
- B** As of 1526 hours, March 26, 2016, Stephenville Gas Turbine End A unavailable (25 MW).
- C** As of 1316 hours, July 15, 2016, Nalcor Exploits Grand Falls Unit 4 unavailable. Net impact to the Island Interconnected System is 7 MW.
- D** As of 1719 hours, September 09, 2016, Nalcor Exploits Bishop's Falls plant unit 9 unavailable. No net impact to the Island Interconnected System.
- E** As of 2132 hours, October 10, 2016, Nalcor Exploits Bishop's Falls plant unit 8 unavailable. Net impact to the Island Interconnected System is 1 MW.
- F** As of 1007 hours, November 04, 2016, Nalcor Exploits Bishop's Falls plant unit 2 unavailable. Net impact to the Island Interconnected System is 2 MW.
- G** As of 1525 hours, November 30, 2016, Nalcor Exploits Bishop's Falls Unit 6 unavailable. Net impact to the Island Interconnected System is 2 MW.
- H** As of 1639 hours, December 05, 2016, Holyrood Unit 1 derated to 140 MW (170 MW).
- I** At 1649 hours, December 06, 2016, Hardwoods Gas Turbine End A available at full capacity (25 MW).

### Section 2 Island Interconnected System Supply and Demand

Wed, Dec 07, 2016	Island System Outlook <sup>3</sup>	Seven-Day Forecast	Temperature (°C)		Island System Daily Peak Demand (MW)	
			Morning	Evening	Forecast	Adjusted <sup>7</sup>
Available Island System Supply: <sup>5</sup>	1,955 MW	Wednesday, December 07, 2016	-6	-4	1,520	1,422
NLH Generation: <sup>4</sup>	1,640 MW	Thursday, December 08, 2016	-4	-1	1,415	1,318
NLH Power Purchases: <sup>6</sup>	110 MW	Friday, December 09, 2016	3	-1	1,370	1,274
Other Island Generation:	205 MW	Saturday, December 10, 2016	-2	-4	1,400	1,304
Current St. John's Temperature:	-7 °C	Sunday, December 11, 2016	-5	-5	1,485	1,388
Current St. John's Windchill:	-16 °C	Monday, December 12, 2016	-5	-4	1,515	1,417
7-Day Island Peak Demand Forecast:	1,520 MW	Tuesday, December 13, 2016	2	-3	1,495	1,398

#### Supply Notes For December 07, 2016

- Notes:
1. Generation outages for running and corrective maintenance are included. These are not unusual for power system operations. They generally do not impact customer supply. The power system operators schedule outages to system equipment whenever possible to coincide with periods when customer demands are low and sufficient supply reserves are available. However, from time to time equipment outages are necessary and reserves may be impacted.
  2. Due to the Island Interconnected System being isolated from the larger North American grid, when there is a sudden loss of large generating units some customer's load must be interrupted for short periods to bring generation output equal to customer demand. This automatic action of power system protection, referred to as under frequency load shedding, is necessary to ensure the integrity and reliability of system equipment. Under frequency events typically occur 5 to 8 times per year on the Island Interconnected System and the resultant customer load interruptions are generally less than 30 minutes.
  3. As of 0800 Hours.
  4. Gross output including station service at Holyrood (24.5 MW) and improved NLH hydraulic output due to water levels (35 MW).
  5. Gross output from all Island sources (including Note 4).
  6. NLH Power Purchases include: CBPP Co-Gen, Nalcor Exploits, Rattle Brook, Star Lake, Vale capacity assistance (when applicable), and Wind Generation.
  7. Adjusted for CBP&P interruptible load and the impact of voltage reduction, when applicable.

### Section 3 Island Peak Demand Information Previous Day Actual Peak and Current Day Forecast Peak

Tue, Dec 06, 2016	Actual Island Peak Demand <sup>8</sup>	17:00	1,488 MW
Wed, Dec 07, 2016	Forecast Island Peak Demand		1,520 MW

- Notes: 8. Island Demand is supplied by NLH generation and purchases, plus generation owned and operated by Newfoundland Power and Corner Brook Pulp & Paper (Deer Lake Power, DLP).