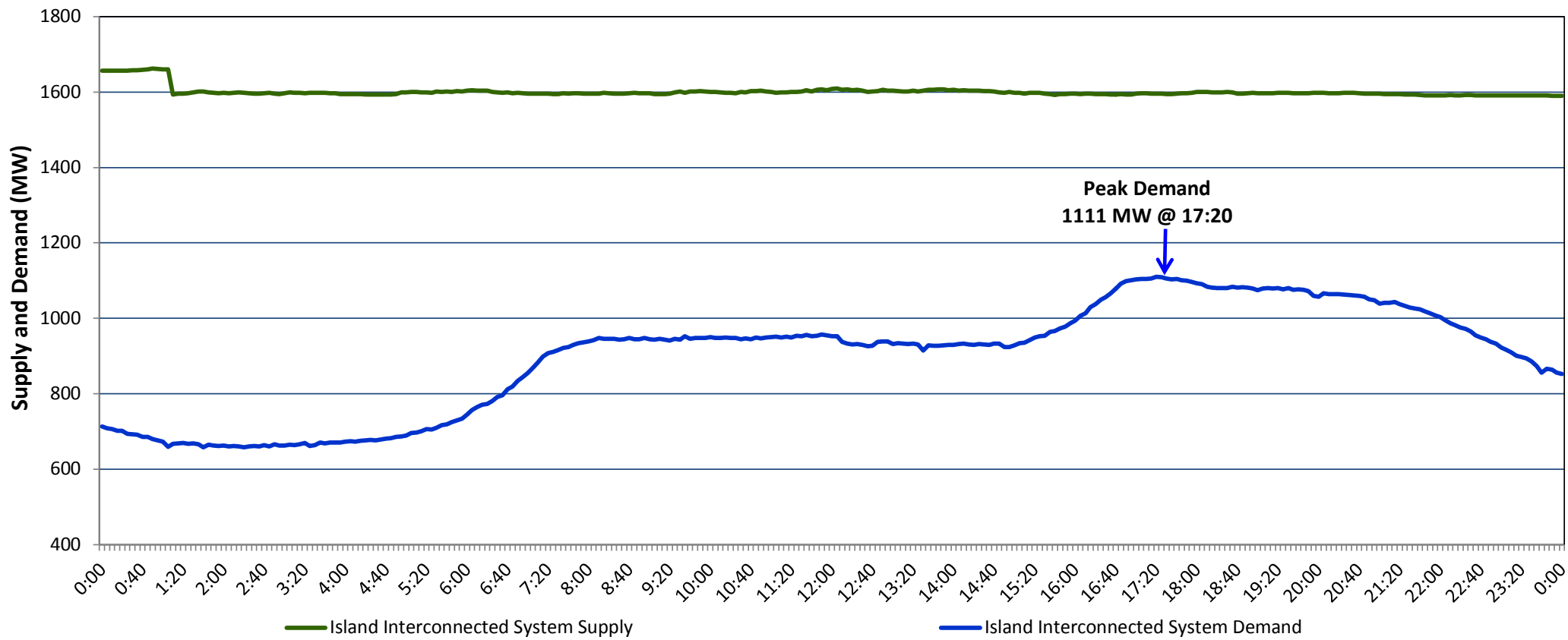


Newfoundland Labrador Hydro (NLH)
Supply and Demand Status Report Filed Thursday, November 24, 2016

Section 1
Island Interconnected System Supply and Demand
Actual 24 Hour System Performance For Wednesday, November 23, 2016



Supply Notes For November 23, 2016

- 1,2
- A As of 1956 hours, January 14, 2016, Nalcor Exploits Grand Falls Unit 7 unavailable. No net impact to the Island Interconnected System.
- B As of 1526 hours, March 26, 2016, Stephenville Gas Turbine End A unavailable (25 MW).
- C As of 1316 hours, July 15, 2016, Nalcor Exploits Grand Falls Unit 4 unavailable. Net impact to the Island Interconnected System is 7 MW.
- D As of 1719 hours, September 09, 2016, Nalcor Exploits Bishop's Falls plant unit 9 unavailable. No net impact to the Island Interconnected System.
- E As of 0717 hours, September 14, 2016, Bay d'Espoir Unit 1 unavailable (76.5 MW).
- F As of 0717 hours, September 14, 2016, Bay d'Espoir Unit 2 unavailable (76.5 MW).
- G As of 2132 hours, October 10, 2016, Nalcor Exploits Bishop's Falls plant units 4,5,6 and 8 unavailable. Net impact to the Island Interconnected System is 9 MW.
- H As of 1007 hours, November 04, 2016, Nalcor Exploits Bishop's Falls plant unit 2 unavailable. Net impact to the Island Interconnected System is 2 MW.
- I As of 1245 hours, November 13, 2016, Star Lake Unit unavailable (18 MW).
- J As of 0842 hours, November 19, 2016, Hardwoods Gas Turbine End A unavailable. Previously derated to to 19 MW (25 MW).
- K As of 1433 hours, November 21, 2016, Upper Salmon Unit unavailable (84 MW).
- L At 0056 hours, November 23, 2016, Cat Arm Unit 1 unavailable (67 MW).

Section 2
Island Interconnected Supply and Demand

Thu, Nov 24, 2016	Island System Outlook ³	Seven-Day Forecast	Temperature (°C)		Island System Daily Peak Demand (MW)	
			Morning	Evening	Forecast	Adjusted ⁷
Available Island System Supply: ⁵	1,605 MW	Thursday, November 24, 2016	13	15	1,260	1,245
NLH Generation: ⁴	1,340 MW	Friday, November 25, 2016	2	12	1,285	1,270
NLH Power Purchases: ⁶	65 MW	Saturday, November 26, 2016	7	5	1,280	1,265
Other Island Generation:	200 MW	Sunday, November 27, 2016	9	4	1,330	1,314
Current St. John's Temperature:	3 °C	Monday, November 28, 2016	9	11	1,200	1,186
Current St. John's Windchill:	N/A °C	Tuesday, November 29, 2016	10	10	1,295	1,280
7-Day Island Peak Demand Forecast:	1,330 MW	Wednesday, November 30, 2016	4	5	1,205	1,191

Supply Notes For November 24, 2016

- Notes:
- Generation outages for running and corrective maintenance are included. These are not unusual for power system operations. They generally do not impact customer supply. The power system operators schedule outages to system equipment whenever possible to coincide with periods when customer demands are low and sufficient supply reserves are available. However, from time to time equipment outages are necessary and reserves may be impacted.
 - Due to the Island Interconnected System being isolated from the larger North American grid, when there is a sudden loss of large generating units some customer's load must be interrupted for short periods to bring generation output equal to customer demand. This automatic action of power system protection, referred to as under frequency load shedding, is necessary to ensure the integrity and reliability of system equipment. Under frequency events typically occur 5 to 8 times per year on the Island Interconnected System and the resultant customer load interruptions are generally less than 30 minutes.
 - As of 0800 Hours.
 - Gross output including station service at Holyrood (24.5 MW) and improved NLH hydraulic output due to water levels (35 MW).
 - Gross output from all Island sources (including Note 4).
 - NLH Power Purchases include: CBPP Co-Gen, Nalcor Exploits, Rattle Brook, Star Lake, Vale capacity assistance (when applicable), and Wind Generation.
 - Adjusted for CBP&P interruptible load and the impact of voltage reduction, when applicable.

Section 3
Island Peak Demand Information
Previous Day Actual Peak and Current Day Forecast Peak

Wed, Nov 23, 2016	Actual Island Peak Demand ⁸	17:20	1,111 MW
Thu, Nov 24, 2016	Forecast Island Peak Demand		1,260 MW

- Notes:
8. Island Demand is supplied by NLH generation and purchases, plus generation owned and operated by Newfoundland Power and Corner Brook Pulp & Paper (Deer Lake Power, DLP).