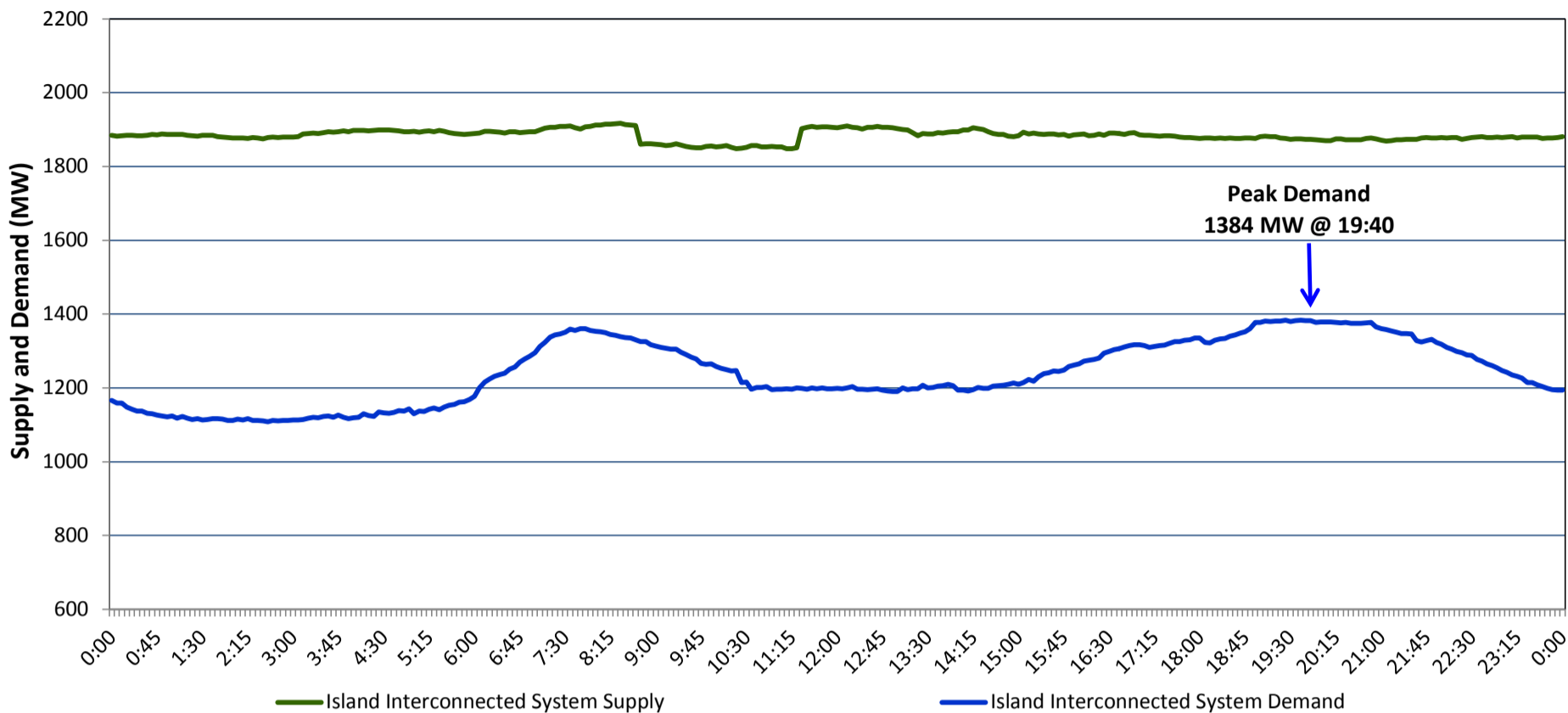


Newfoundland Labrador Hydro (NLH)
Supply and Demand Status Report Filed Friday, March 11, 2016

Section 1
Island Interconnected System Supply and Demand
Actual 24 Hour System Performance For Thursday, March 10, 2016



Supply Notes For March 10, 2016

1,2

- A As of 1956 hours, January 14, 2016, Nalcor Exploits Grand Falls Unit 7 unavailable. No net impact to the Island Interconnected System.
- B As of 0710 hours, February 08, 2016, Holyrood Unit 2 derated to 120 MW (170 MW).
- C As of 2010 hours, February 26, 2016, Holyrood Unit 1 derated to 120 MW (170 MW).
- D As of 0732 hours, February 29, 2016, Hardwoods Gas Turbine derated to 38 MW (50 MW). End A 19 MW, End B 25 MW.
- E At 0843 hours, March 10, 2016, Stephenville Gas Turbine unavailable (50 MW).
- F At 1118 hours, March 10, 2016, Stephenville Gas Turbine available (50 MW).

Section 2
Island Interconnected Supply and Demand

Fri, Mar 11, 2016	Island System Outlook ³	Seven-Day Forecast	Temperature (°C)		Island System Daily Peak Demand (MW)	
			Morning	Evening	Forecast	Adjusted ⁶
Available Island System Supply: ⁵	1,880 MW	Friday, March 11, 2016	-8	-6	1,540	1,442
NLH Generation: ⁴	1,580 MW	Saturday, March 12, 2016	-7	-8	1,470	1,373
NLH Power Purchases: ⁷	95 MW	Sunday, March 13, 2016	-7	-2	1,425	1,328
Other Island Generation:	205 MW	Monday, March 14, 2016	-6	-7	1,495	1,398
Current St. John's Temperature:	-9 °C	Tuesday, March 15, 2016	-6	-2	1,445	1,348
Current St. John's Windchill:	-12 °C	Wednesday, March 16, 2016	-2	-1	1,325	1,230
7-Day Island Peak Demand Forecast:	1,540 MW	Thursday, March 17, 2016	-2	-1	1,305	1,210

Supply Notes For March 11, 2016

3

- Notes: 1. Generation outages for running and corrective maintenance are included. These are not unusual for power system operations. They generally do not impact customer supply. The power system operators schedule outages to system equipment whenever possible to coincide with periods when customer demands are low and sufficient supply reserves are available. However, from time to time equipment outages are necessary and reserves may be impacted.
2. Due to the Island Interconnected System being isolated from the larger North American grid, when there is a sudden loss of large generating units some customer's load must be interrupted for short periods to bring generation output equal to customer demand. This automatic action of power system protection, referred to as under frequency load shedding, is necessary to ensure the integrity and reliability of system equipment. Under frequency events typically occur 5 to 8 times per year on the Island Interconnected System and the resultant customer load interruptions are generally less than 30 minutes.
3. As of 0800 Hours.
4. Gross output including station service at Holyrood (24.5 MW) and improved NLH hydraulic output due to water levels (35 MW).
5. Gross output from all Island sources (including Note 4).
6. Adjusted for CBP&P interruptible load (when applicable) and the impact of voltage reduction.
7. NLH Power Purchases include: CBPP Co-Gen, Nalcor Exploits, Rattle Brook, Star Lake, Vale capacity assistance, and Wind Generation.

Section 3
Island Peak Demand Information
Previous Day Actual Peak and Current Day Forecast Peak

Thu, Mar 10, 2016	Actual Island Peak Demand ⁸	19:40	1,384 MW
Fri, Mar 11, 2016	Forecast Island Peak Demand		1,540 MW

Notes: 8. Island Demand is supplied by NLH generation and purchases, plus generation owned and operated by Newfoundland Power and Corner Brook Pulp & Paper (Deer Lake Power, DLP).