

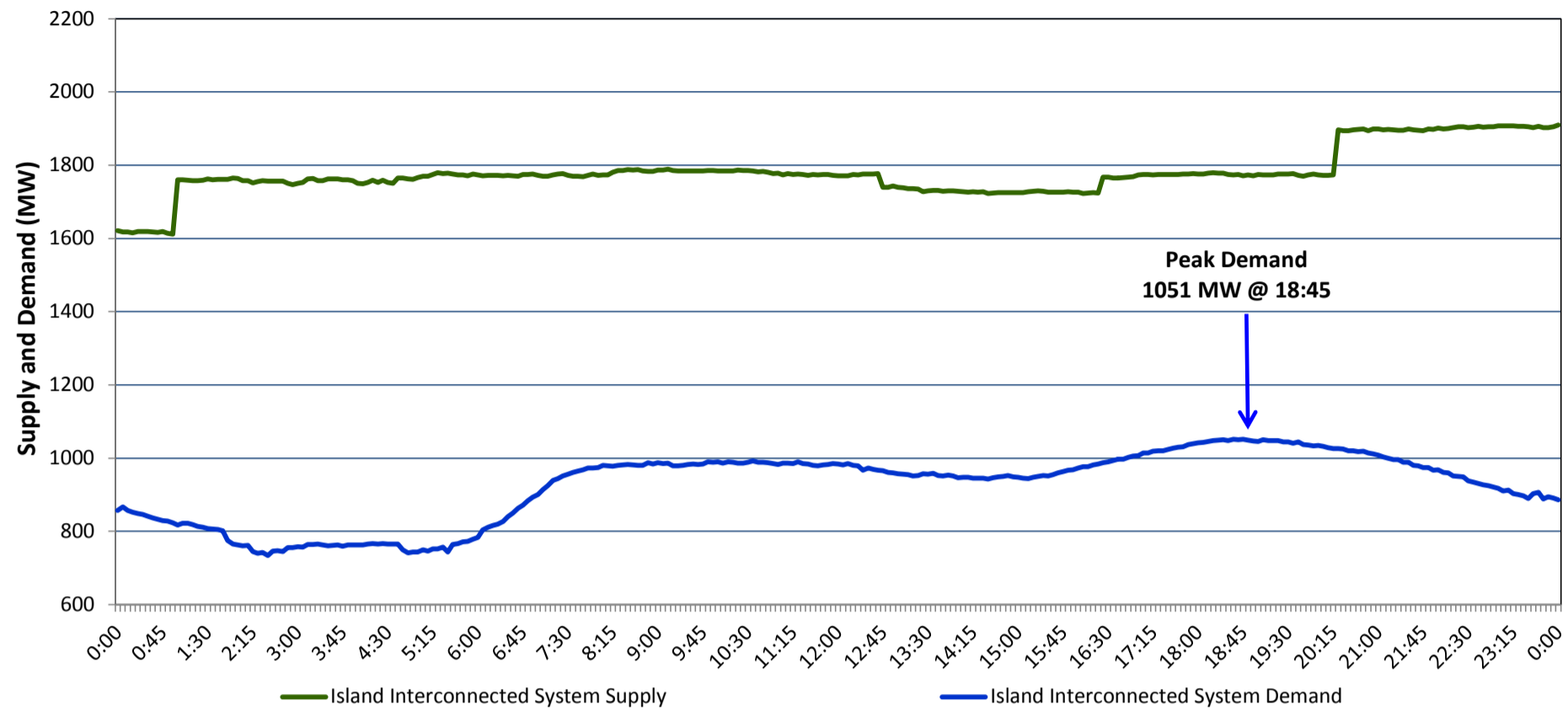
Newfoundland Labrador Hydro (NLH)

Supply and Demand Status Report Filed Monday, February 29, 2016

Section 1

Island Interconnected System Supply and Demand

Actual 24 Hour System Performance For Friday, February 26, 2016



Supply Notes For February 26, 2016

1,2

- A As of 1956 hours, January 14, 2016, Nalcor Exploits Grand Falls Unit 7 unavailable. No net impact to the Island Interconnected System.
- B As of 0710 hours, February 08, 2016, Holyrood Unit 2 derated to 120 MW (170 MW).
- C At 0055 hours, February 26, 2016, Holyrood Unit 3 available (150 MW).
- D At 1244 hours, February 26, 2016, Hardwoods Gas Turbine unavailable, previously derated to 38MW (50 MW).
- E At 1625 hours, February 26, 2016, Hardwoods Gas Turbine available, derated to 38 MW (50 MW). End A 19 MW, End B 25 MW.
- F At 2010 hours, February 26, 2016, Holyrood Unit 1 available, derated to 120 MW (170 MW).

Section 2

Island Interconnected Supply and Demand

Sat, Feb 27, 2016 Island System Outlook ³			Seven-Day Forecast		Temperature (°C)		Island System Daily Peak Demand (MW)	
					Morning	Evening		
Available Island System Supply: ⁵	1,920	MW	Saturday, February 27, 2016		3	-4	1,335	1,239
NLH Generation: ⁴	1,580	MW	Sunday, February 28, 2016		-4	0	1,330	1,234
NLH Power Purchases: ⁷	150	MW	Monday, February 29, 2016		-4	3	1,385	1,289
Other Island Generation:	190	MW	Tuesday, March 01, 2016		4	3	1,180	1,086
Current St. John's Temperature:	1	°C	Wednesday, March 02, 2016		0	1	1,270	1,175
Current St. John's Windchill:	N/A	°C	Thursday, March 03, 2016		2	3	1,300	1,205
7-Day Island Peak Demand Forecast:	1,385	MW	Friday, March 04, 2016		-1	-2	1,325	1,230

Supply Notes For February 27, 2016

3

- Notes: 1. Generation outages for running and corrective maintenance are included. These are not unusual for power system operations. They generally do not impact customer supply. The power system operators schedule outages to system equipment whenever possible to coincide with periods when customer demands are low and sufficient supply reserves are available. However, from time to time equipment outages are necessary and reserves may be impacted.
2. Due to the Island Interconnected System being isolated from the larger North American grid, when there is a sudden loss of large generating units some customer's load must be interrupted for short periods to bring generation output equal to customer demand. This automatic action of power system protection, referred to as under frequency load shedding, is necessary to ensure the integrity and reliability of system equipment. Under frequency events typically occur 5 to 8 times per year on the Island Interconnected System and the resultant customer load interruptions are generally less than 30 minutes.
3. As of 0800 Hours.
4. Gross output including station service at Holyrood (24.5 MW) and improved NLH hydraulic output due to water levels (35 MW).
5. Gross output from all Island sources (including Note 4).
6. Adjusted for CBP&P interruptible load (when applicable) and the impact of voltage reduction.
7. NLH Power Purchases include: CBPP Co-Gen, Nalcor Exploits, Rattle Brook, Star Lake, Vale capacity assistance, and Wind Generation.

Section 3

Island Peak Demand Information

Previous Day Actual Peak and Current Day Forecast Peak

Fri, Feb 26, 2016	Actual Island Peak Demand ⁸	18:45	1,051 MW
Sat, Feb 27, 2016	Forecast Island Peak Demand		1,335 MW

Notes: 8. Island Demand is supplied by NLH generation and purchases, plus generation owned and operated by Newfoundland Power and Corner Brook Pulp & Paper (Deer Lake Power, DLP).