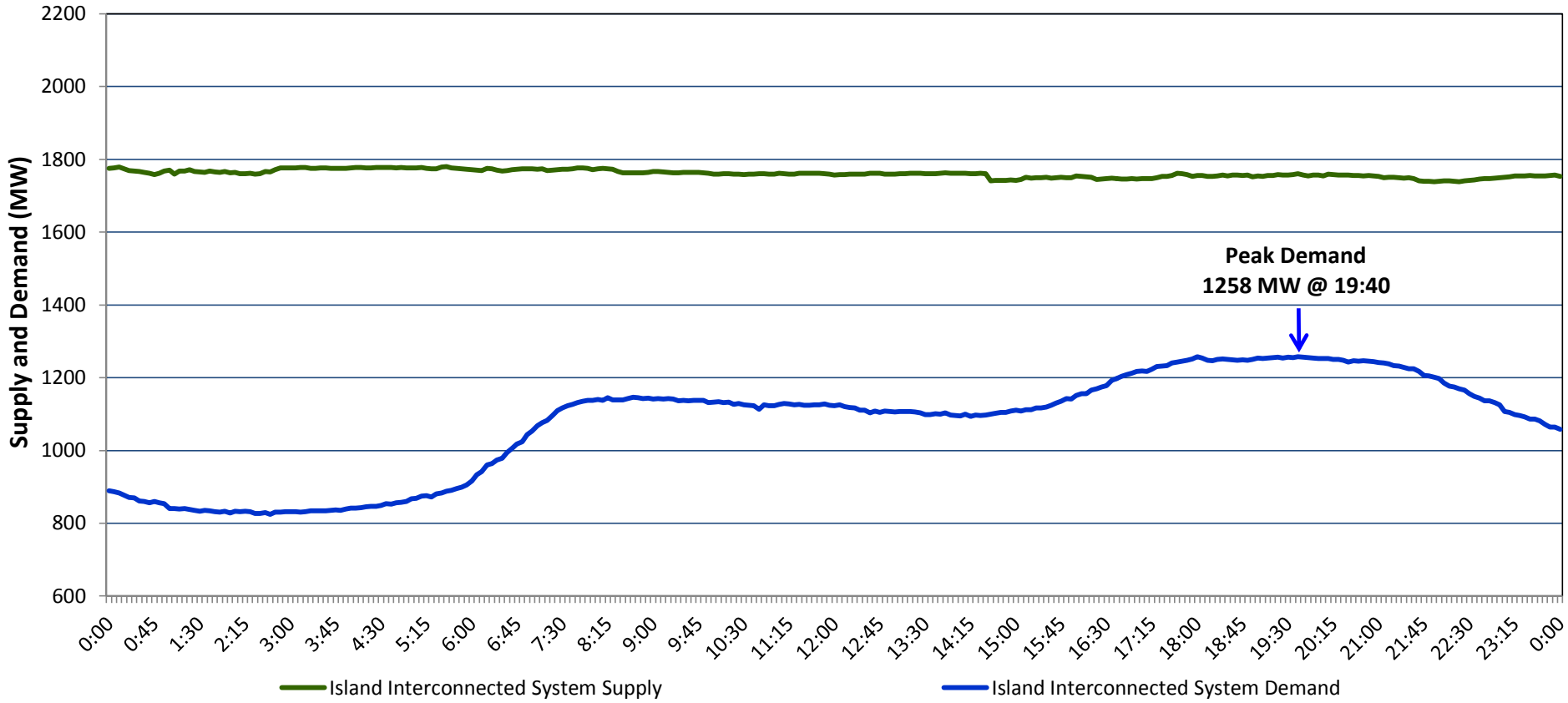


Newfoundland Labrador Hydro (NLH)
Supply and Demand Status Report Filed Friday, February 19, 2016

Section 1
Island Interconnected System Supply and Demand
Actual 24 Hour System Performance For Thursday, February 18, 2016



Supply Notes For February 18, 2016

1,2

- A As of 1956 hours, January 14, 2016, Nalcor Exploits Grand Falls Unit 7 unavailable. No net impact to the Island Interconnected System.
- B As of 0710 hours, February 08, 2016, Holyrood Unit 2 derated to 120 MW (170 MW).
- C As of 0938 hours, February 14, 2015, Hardwoods Gas Turbine derated to 38MW (50MW). End A 19 MW, End B 25 MW.
- D As of 2154 hours, February 16, 2016, Holyrood Unit 1 unavailable. Previously derated to 50 MW (170 MW).
- E At 0044 hours, February 18, 2016, Paradise River Unit unavailable (8 MW).
- F At 0108 hours, February 18, 2016, Paradise River Unit available (8 MW).
- G At 0825 hours, February 18, 2016, St. Anthony Diesel Plant Unit 544 unavailable (2 MW).
- H At 1257 hours, February 18, 2016, St. Anthony Diesel Plant Unit 544 available (2 MW).

Section 2
Island Interconnected Supply and Demand

Fri, Feb 19, 2016	Island System Outlook ³	Seven-Day Forecast	Temperature (°C)		Island System Daily Peak Demand (MW)	
			Morning	Evening	Forecast	Adjusted ⁶
Available Island System Supply: ⁵	1,795 MW	Friday, February 19, 2016	-4	-7	1,440	1,343
NLH Generation: ⁴	1,460 MW	Saturday, February 20, 2016	-6	-7	1,465	1,368
NLH Power Purchases: ⁷	150 MW	Sunday, February 21, 2016	-7	-3	1,370	1,274
Other Island Generation:	185 MW	Monday, February 22, 2016	-1	2	1,330	1,234
Current St. John's Temperature:	-3 °C	Tuesday, February 23, 2016	-1	-8	1,475	1,378
Current St. John's Windchill:	-12 °C	Wednesday, February 24, 2016	-9	-4	1,555	1,457
7-Day Island Peak Demand Forecast:	1,555 MW	Thursday, February 25, 2016	6	10	1,245	1,150

Supply Notes For February 19, 2016

3

- Notes: 1. Generation outages for running and corrective maintenance are included. These are not unusual for power system operations. They generally do not impact customer supply. The power system operators schedule outages to system equipment whenever possible to coincide with periods when customer demands are low and sufficient supply reserves are available. However, from time to time equipment outages are necessary and reserves may be impacted.
2. Due to the Island Interconnected System being isolated from the larger North American grid, when there is a sudden loss of large generating units some customer's load must be interrupted for short periods to bring generation output equal to customer demand. This automatic action of power system protection, referred to as under frequency load shedding, is necessary to ensure the integrity and reliability of system equipment. Under frequency events typically occur 5 to 8 times per year on the Island Interconnected System and the resultant customer load interruptions are generally less than 30 minutes.
3. As of 0800 Hours.
4. Gross output including station service at Holyrood (24.5 MW) and improved NLH hydraulic output due to water levels (35 MW).
5. Gross output from all Island sources (including Note 4).
6. Adjusted for CBP&P interruptible load (when applicable) and the impact of voltage reduction.
7. NLH Power Purchases include: CBPP Co-Gen, Nalcor Exploits, Rattle Brook, Star Lake, Vale capacity assistance, and Wind Generation.

Section 3
Island Peak Demand Information
Previous Day Actual Peak and Current Day Forecast Peak

Thu, Feb 18, 2016	Actual Island Peak Demand ⁸	19:40	1,258 MW
Fri, Feb 19, 2016	Forecast Island Peak Demand		1,440 MW

Notes: 8. Island Demand is supplied by NLH generation and purchases, plus generation owned and operated by Newfoundland Power and Corner Brook Pulp & Paper (Deer Lake Power, DLP).