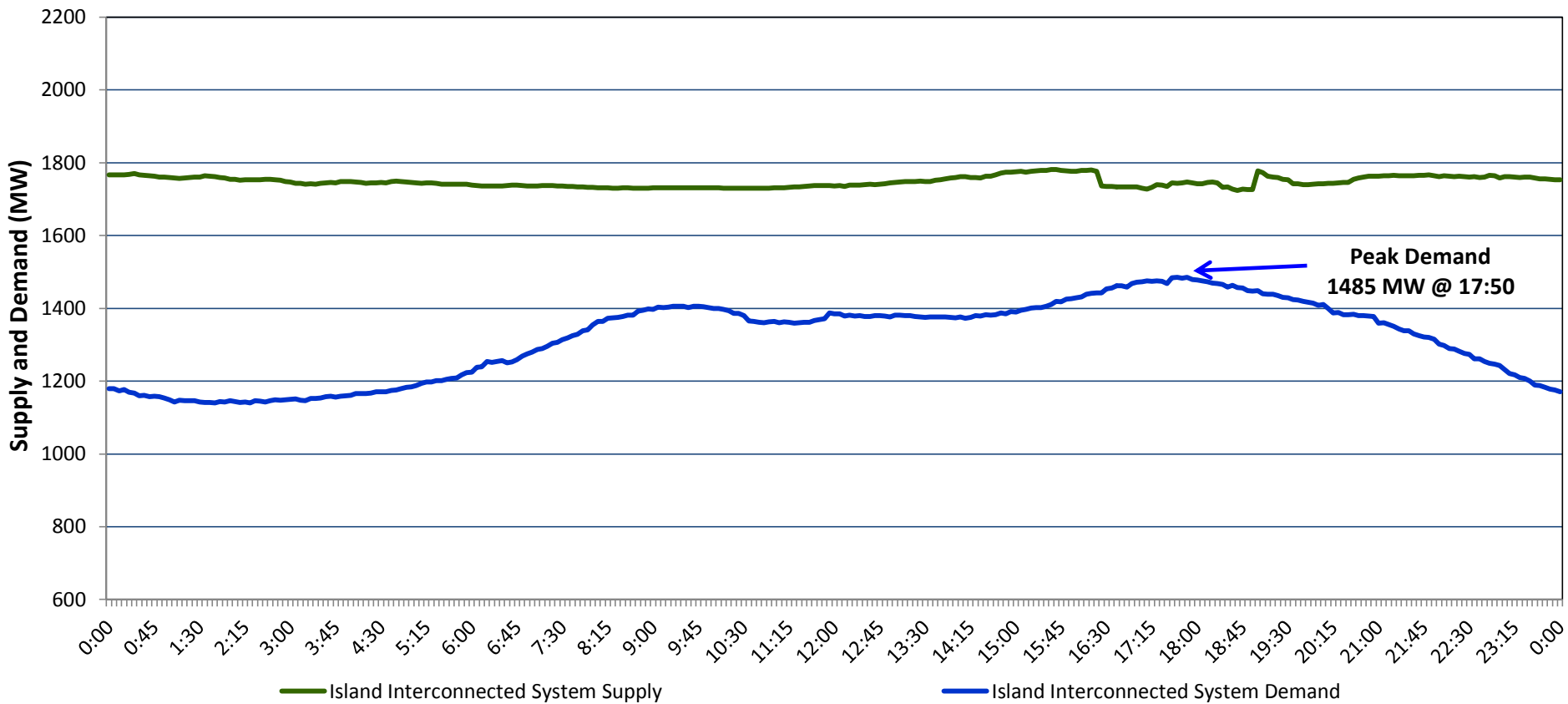


Newfoundland Labrador Hydro (NLH)  
Supply and Demand Status Report Filed Monday, February 15, 2016

Section 1  
Island Interconnected System Supply and Demand  
Actual 24 Hour System Performance For Saturday, February 13, 2016



Supply Notes For February 13, 2016

- 1,2
- A

As of 1956 hours, January 14, 2016, Nalcor Exploits Grand Falls Unit 7 unavailable. No net impact to the Island Interconnected System.
- B

As of 1116 hours, February 07, 2016, Holyrood Unit 1 derated to 50 MW (170 MW).
- C

As of 0710 hours, February 08, 2016, Holyrood Unit 2 derated to 120 MW (170 MW).
- D

As of 1524 hours, February 08, 2016, Hardwoods Gas Turbine End A unavailable (25 MW).
- E

As of 0625 hours, February 10, 2016, Stephenville Gas Turbine End B unavailable (25 MW).
- F

At 1600 hours, February 13, 2016, Holyrood Combustion Turbine derated to 80 MW (123.5 MW).
- G

At 1900 hours, February 13, 2016, Holyrood Combustion Turbine available to full capability (123.5 MW).

Section 2  
Island Interconnected Supply and Demand

Sun, Feb 14, 2016			Seven-Day Forecast	Temperature (°C)		Island System Daily Peak Demand (MW)	
				Morning	Evening	Forecast	Adjusted <sup>6</sup>
Available Island System Supply: <sup>5</sup>			Sunday, February 14, 2016	-6	-10	1,525	1,427
NLH Generation: <sup>4</sup>			Monday, February 15, 2016	-11	-8	1,595	1,496
NLH Power Purchases: <sup>7</sup>			Tuesday, February 16, 2016	-7	-1	1,470	1,373
Other Island Generation:			Wednesday, February 17, 2016	4	8	1,270	1,175
Current St. John's Temperature:			Thursday, February 18, 2016	3	-4	1,410	1,314
Current St. John's Windchill:			Friday, February 19, 2016	-6	-6	1,480	1,383
7-Day Island Peak Demand Forecast:			Saturday, February 20, 2016	-7	-4	1,300	1,205

Supply Notes For February 14, 2016

- 3
- Notes: 1. Generation outages for running and corrective maintenance are included. These are not unusual for power system operations. They generally do not impact customer supply. The power system operators schedule outages to system equipment whenever possible to coincide with periods when customer demands are low and sufficient supply reserves are available. However, from time to time equipment outages are necessary and reserves may be impacted.
2. Due to the Island Interconnected System being isolated from the larger North American grid, when there is a sudden loss of large generating units some customer's load must be interrupted for short periods to bring generation output equal to customer demand. This automatic action of power system protection, referred to as under frequency load shedding, is necessary to ensure the integrity and reliability of system equipment. Under frequency events typically occur 5 to 8 times per year on the Island Interconnected System and the resultant customer load interruptions are generally less than 30 minutes.
3. As of 0800 Hours.
4. Gross output including station service at Holyrood (24.5 MW) and improved NLH hydraulic output due to water levels (35 MW).
5. Gross output from all Island sources (including Note 4).
6. Adjusted for CBP&P interruptible load (when applicable) and the impact of voltage reduction.
7. NLH Power Purchases include: CBPP Co-Gen, Nalcor Exploits, Rattle Brook, Star Lake, Vale capacity assistance, and Wind Generation.

Section 3  
Island Peak Demand Information  
Previous Day Actual Peak and Current Day Forecast Peak

Sat, Feb 13, 2016	Actual Island Peak Demand <sup>8</sup>	17:50	1,485 MW
Sun, Feb 14, 2016	Forecast Island Peak Demand		1,525 MW

- Notes: 8. Island Demand is supplied by NLH generation and purchases, plus generation owned and operated by Newfoundland Power and Corner Brook Pulp & Paper (Deer Lake Power, DLP).