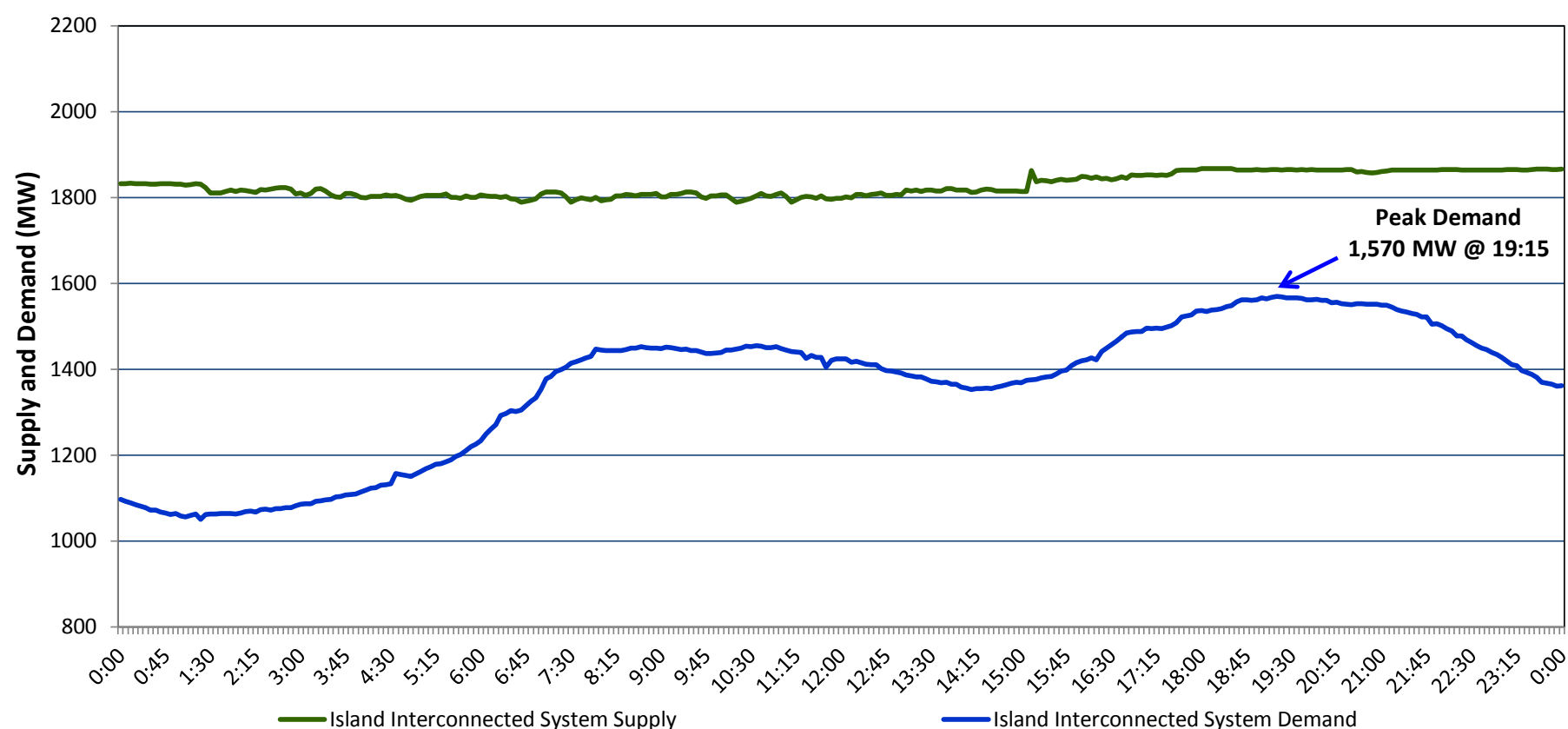


**Newfoundland Labrador Hydro (NLH)
Supply and Demand Status Report Filed Wednesday, March 04, 2015**

**Section 1
Island Interconnected System Supply and Demand
Actual 24 Hour System Performance For Tuesday, March 03, 2015**



Supply Notes For March 03, 2015

- A As of 1522 hours, February 27, 2015, Holyrood Unit 1 removed from service (170 MW).
- B As of 1823 hours, March 01, 2015, Hardwoods Gas Turbine End B unavailable (25 MW).
- C At 1508 hours, March 02, 2015, Hardwoods Gas Turbine End A returned to service (25 MW).

**Section 2
Island Interconnected Supply and Demand**

Wed, Mar 04, 2015 Island System Outlook ³	Seven-Day Forecast	Temperature (°C)		Island System Daily Peak Demand (MW)	
		Morning	Evening	Forecast	Adjusted ⁶
Available Island System Supply: ⁵ 1,595 MW	Wednesday, March 04, 2015	-12	1	1,630	1,530
NLH Generation: ⁴ 1,295 MW	Thursday, March 05, 2015	-3	-6	1,470	1,375
NLH Power Purchases: 105 MW	Friday, March 06, 2015	-14	-12	1,645	1,545
Other Island Generation: 195 MW	Saturday, March 07, 2015	-14	-7	1,530	1,430
Current St. John's Temperature: -11 °C	Sunday, March 08, 2015	-5	-7	1,405	1,310
Current St. John's Windchill: -18 °C	Monday, March 09, 2015	-6	-6	1,465	1,370
7-Day Island Peak Demand Forecast: 1,645 MW	Tuesday, March 10, 2015	-11	-10	1,585	1,485

Supply Notes For March 04, 2015

- D At 0612 hours, March 04, 2015, Holyrood Combustion Turbine unavailable (123.5 MW).
- E At 0715 hours, March 04, 2015, Holyrood Unit 3 tripped offline (150 MW).
- F At 0715 hours, March 04, 2015, Stephenville Gas Turbine End A and End B tripped offline (50 MW).
- G At 0715 hours, March 04, 2015, Hardwoods Gas Turbine End A tripped offline (25 MW).
- H At 0715 hours, March 04, 2015, Star Lake tripped offline (18 MW).
- I At 0725 hours, March 04, 2015, Holyrood Combustion Turbine returned to service (123.5 MW).
- J At 0730 hours, March 04, 2015, St. Anthony Diesel Plant G3 unavailable (1 MW).
- K At 0730 hours, March 04, 2015, St. Anthony Diesel Plant G6 unavailable (2 MW).
- L At 0740 hours, March 04, 2015, Stephenville Gas Turbine End B returned to service (25 MW).

- Notes:
1. Generation outages for running and corrective maintenance are included. These are not unusual for power system operations. They generally do not impact customer supply. The power system operators schedule outages to system equipment whenever possible to coincide with periods when customer demands are low and sufficient supply reserves are available. However, from time to time equipment outages are necessary and reserves may be impacted.
 2. Due to the Island Interconnected System being isolated from the larger North American grid, when there is a sudden loss of large generating units some customer's load must be interrupted for short periods to bring generation output equal to customer demand. This automatic action of power system protection, referred to as underfrequency load shedding, is necessary to ensure the integrity and reliability of system equipment. Underfrequency events typically occur 5 to 8 times per year on the Island Interconnected System and the resultant customer load interruptions are generally less than 30 minutes.
 3. As of 0800 Hours.
 4. Gross output including station service at Holyrood (24.5 MW) and improved NLH hydraulic output due to water levels (35 MW).
 5. Gross output from all Island sources (including Note 4).
 6. Adjusted for CBP&P interruptible load (when applicable) and the impact of voltage reduction.

**Section 3
Island Peak Demand Information
Previous Day Actual Peak and Current Day Forecast Peak**

Tue, Mar 03, 2015	Actual Island Peak Demand ⁷	19:15	1,570 MW
Wed, Mar 04, 2015	Forecast Island Peak Demand		1,630 MW

- Notes: 7. Island Demand is supplied by NLH generation and purchases, plus generation owned and operated by Newfoundland Power and Corner Brook Pulp & Paper (Deer Lake Power, DLP).