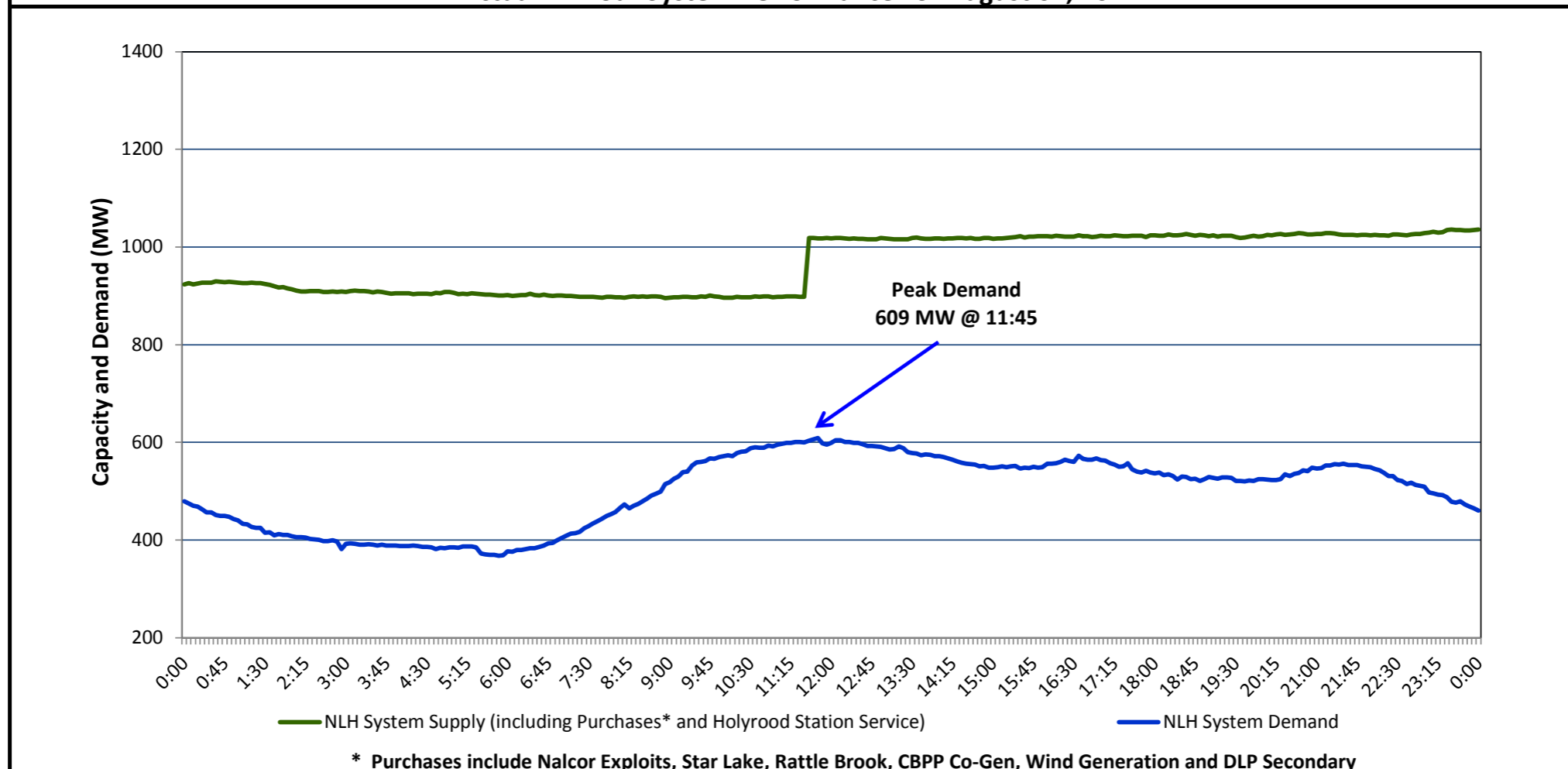


**Newfoundland Labrador Hydro (NLH)
Supply and Demand Status Report Filed August 04, 2014**

**Section 1
NLH System Island Interconnected Supply and Demand
Actual 24 Hour System Performance For August 02, 2014**



Supply Notes for August 02, 2014

- As of 0422 hours, Feb. 17, 2014, Bay d'Espoir Unit 6 unavailable for service (77 MW).
- As of 0800 hours, May 21, 2014, Holyrood Unit 2 removed from service for annual maintenance (165 MW).
- As of 1554 hours, May 24, 2014, Bay d'Espoir Unit 3 removed from service for annual maintenance (76.5 MW).
- As of 0858 hours, June 13, 2014, Stephenville Gas Turbine End A removed from service for annual maintenance (25 MW).
- As of 1800 hours, July 04, 2014, Stephenville Gas Turbine End B derated to 14 MW (25 MW).
- As of 1139 hours, July 09, 2014, Cat Arm Unit 1 derated to 53 MW (67 MW).
- As of 1100 hours, July 21, 2014, Holyrood Unit 1 removed from service for annual maintenance (170 MW).
- As of 0347 hours, July 25, 2014, Hardwoods Gas Turbine unavailable due to a forced outage (50 MW).
- At 1124 hours, August 01, 2014, Bay d'Espoir Unit 7 returned to service. Derating updated to 120 MW (154 MW).

**Section 2
NLH System Island Interconnected Supply and Demand**

August 3, 2014 NLH System Outlook ³	Five-Day Forecast	Temperature (°C)		NLH System Demand (MW)	
		Morning	Evening	Morning	Evening
Available NLH System Supply: ⁴ 1,010 MW	Sunday, August 03, 2014	19	23	575	550
Current St. John's Temperature: 20 °C	Monday, August 04, 2014	17	21	600	625
Current St. John's Windchill: N/A °C	Tuesday, August 05, 2014	14	15	650	625
NLH System Peak Demand Forecast: 575 MW	Wednesday, August 06, 2014	14	17	625	625
	Thursday, August 07, 2014	13	15	650	625

Supply Notes for August 03, 2014³

→

- Notes:
1. Generation outages for running and corrective maintenance are included. These are not unusual for power system operations. They generally do not impact customer supply. The power system operators schedule outages to system equipment whenever possible to coincide with periods when customer demands are low and sufficient supply reserves are available. However, from time to time equipment outages are necessary and reserves may be impacted.
 2. Due to the Island Interconnected System being isolated from the larger North American grid, when there is a sudden loss of large generating units some customer's load must be interrupted for short periods to bring generation output equal to customer demand. This automatic action of power system protection, referred to as underfrequency load shedding, is necessary to ensure the integrity and reliability of system equipment. Underfrequency events typically occur 5 to 8 times per year on the Island Interconnected System and the resultant customer load interruptions are generally less than 30 minutes.
 3. As of 0800 Hours.
 4. Gross output including station service at Holyrood (24.5 MW) and improved hydraulic output due to water levels (35 MW). Includes Nalcor Exploits, Star Lake, Rattle Brook, CBPP Co-Gen. Excludes wind generation and DLP Secondary.

**Section 3
Peak Demand Information
Previous Day Actual Peak and Current Day Forecast Peak**

August 2, 2014	Actual NLH System Island Interconnected Peak Demand ¹	11:45	609 MW
August 3, 2014	Forecast NLH System Island Interconnected Peak Demand		575 MW
August 2, 2014	Actual Total Island Peak Demand ²	12:20	730 MW
August 3, 2014	Forecast Total Island Peak Demand		725 MW

- Notes:
1. NLH System Island Interconnected is supplied by generation owned by NLH as well as NLH Power Purchases as detailed in Section 1 above.
 2. Total Island System Demand is supplied by NLH generation and NLH Power Purchases, plus generation owned and operated by Newfoundland Power and Corner Brook Pulp & Paper to meet their respective supply needs.