

1 Q. **2013 General Rate Application, Intercompany Charges and Shared Services**

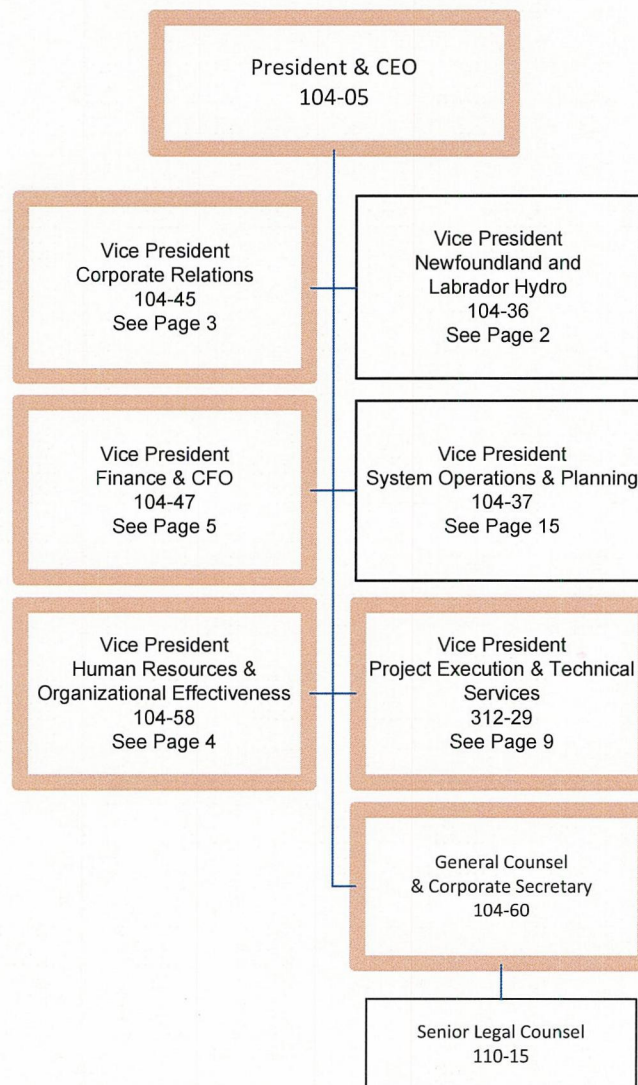
2 Exhibit 1 describes the current corporate structure for Nalcor and Hydro. Provide a
3 complete organization chart that outlines the corporate structure of Hydro only.

4

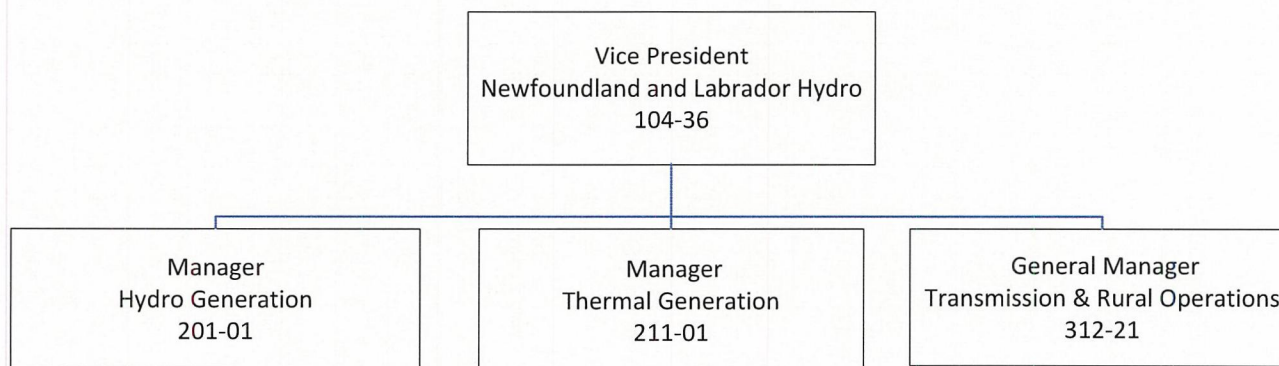
5

6 A. PUB-NLH-138 Attachment 1 (pages 1 – 26) provides a complete organization chart
7 outlining the structure of Hydro. The Nalcor Group of Companies has a matrix
8 organization structure and various Hydro positions report to Nalcor management
9 positions. Therefore, various Nalcor positions were included to reflect the reporting
10 relationships. These management positions have been identified on the
11 organization charts.

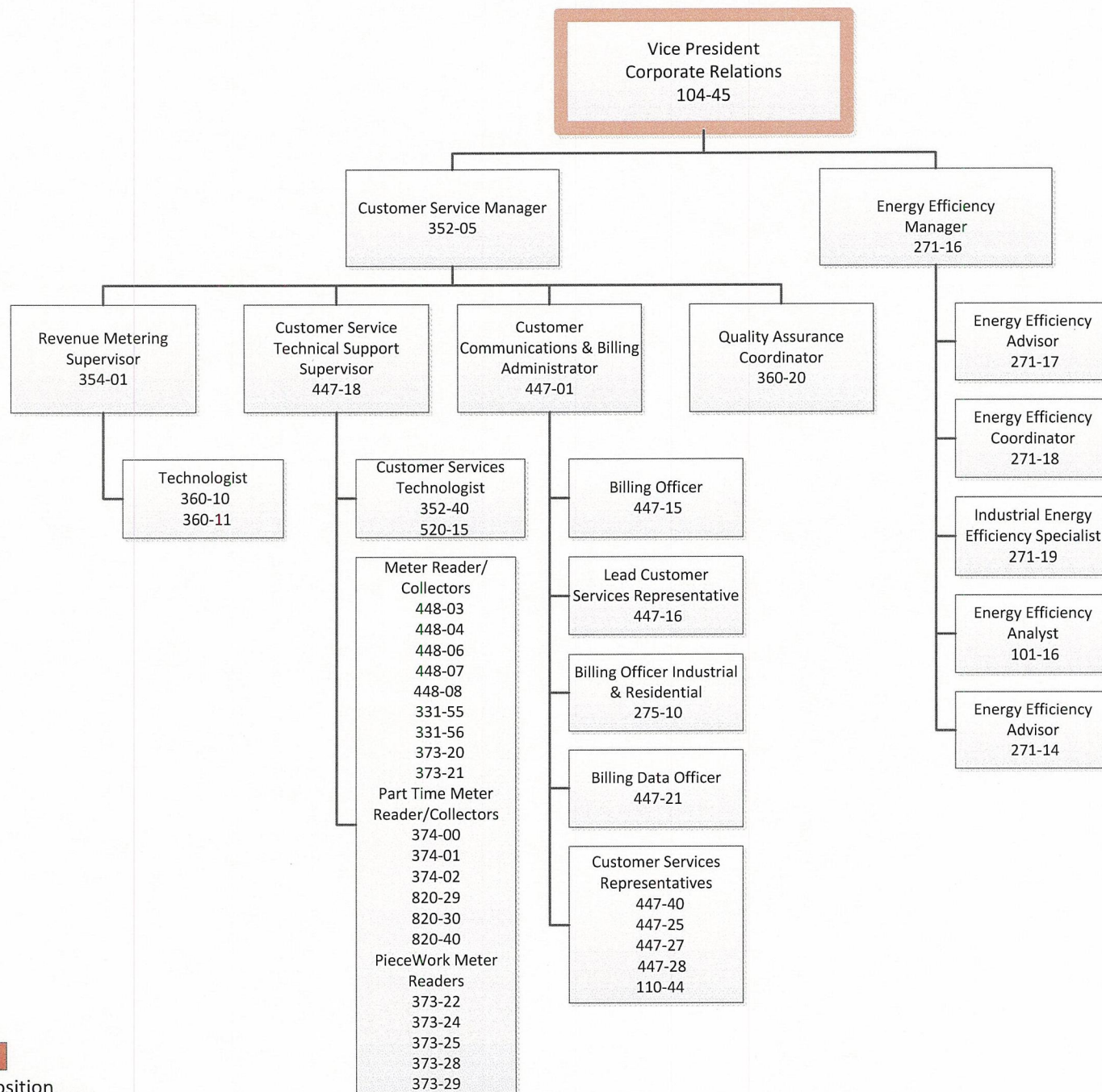
Leadership Team



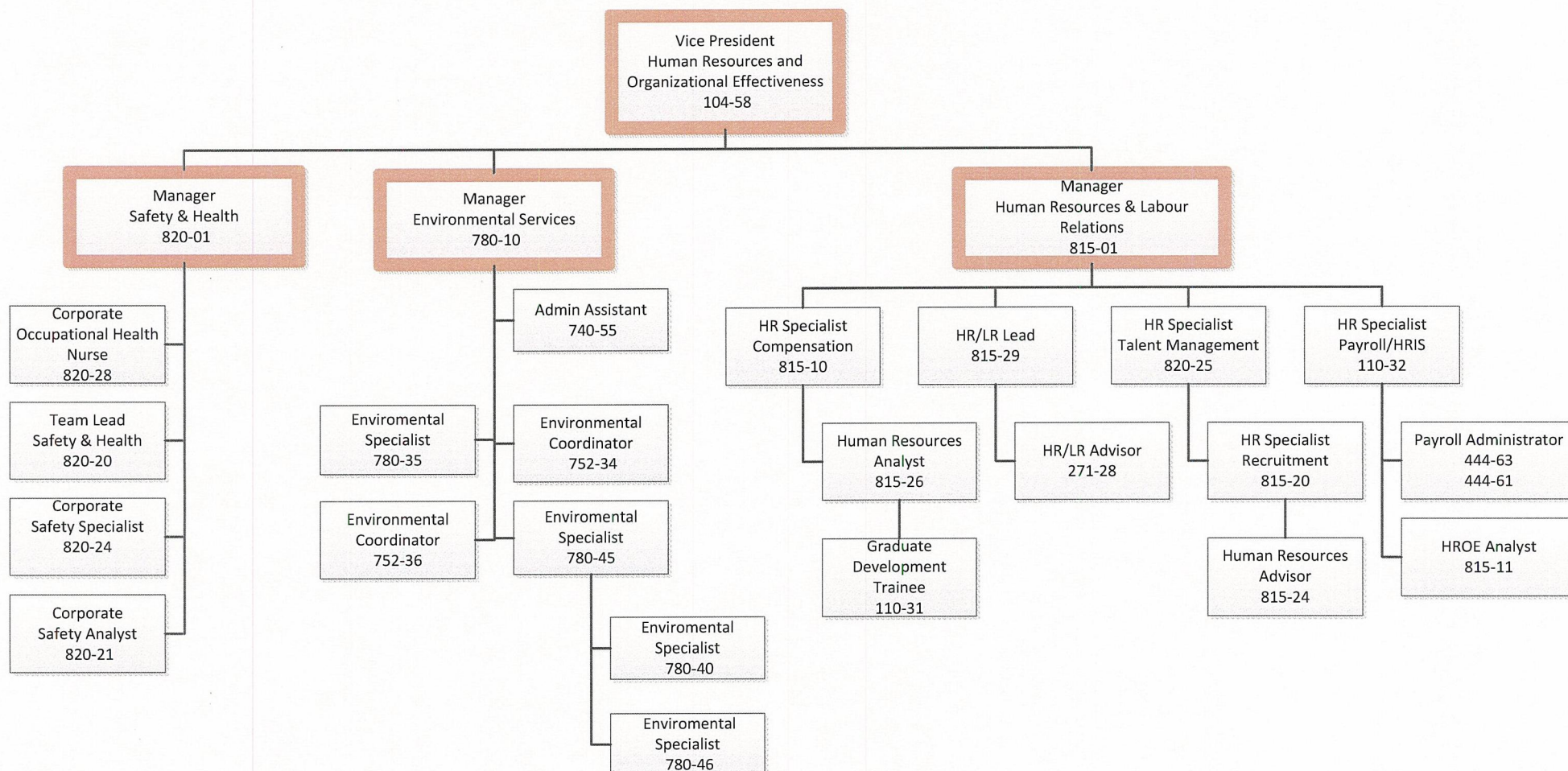
REGULATED OPERATIONS



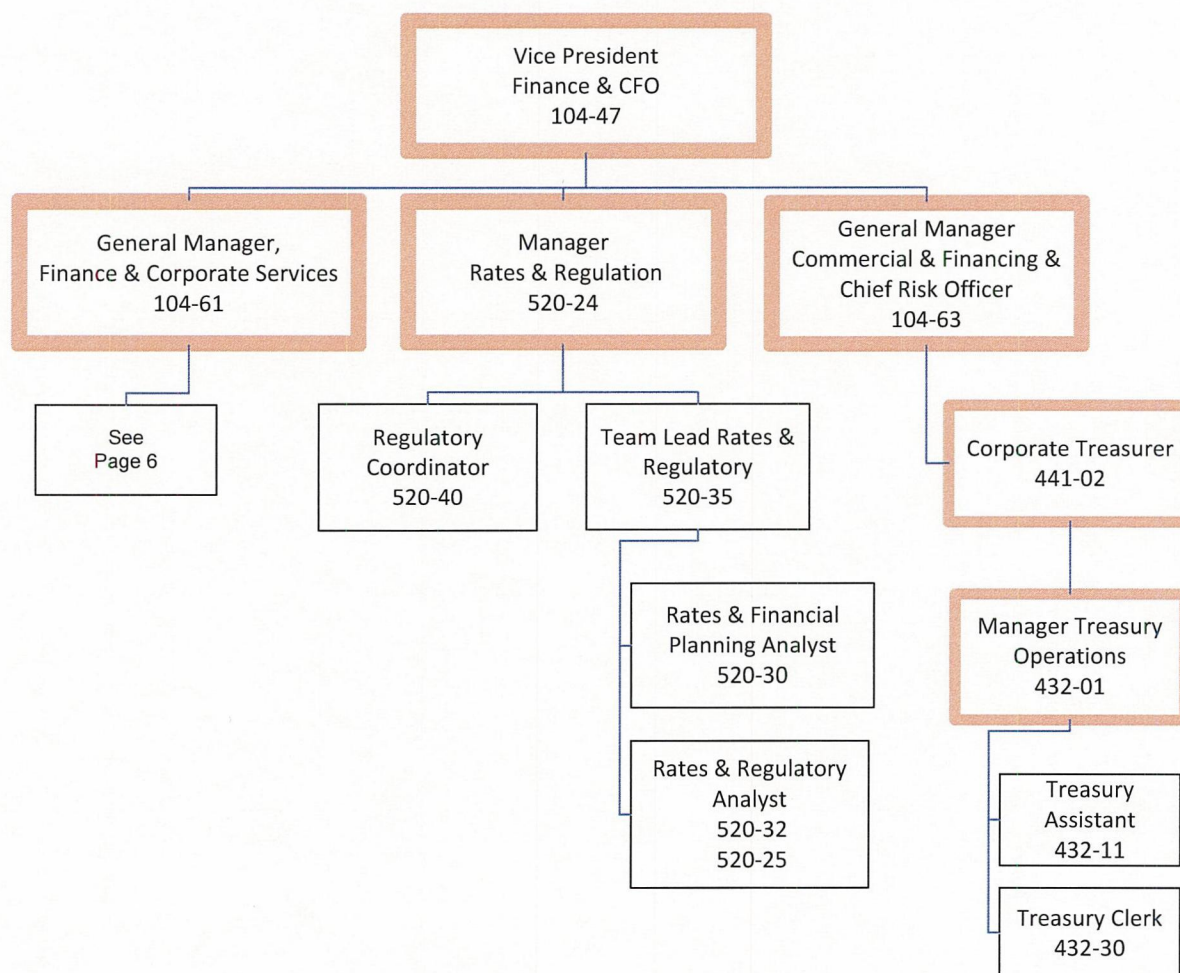
Corporate Relations



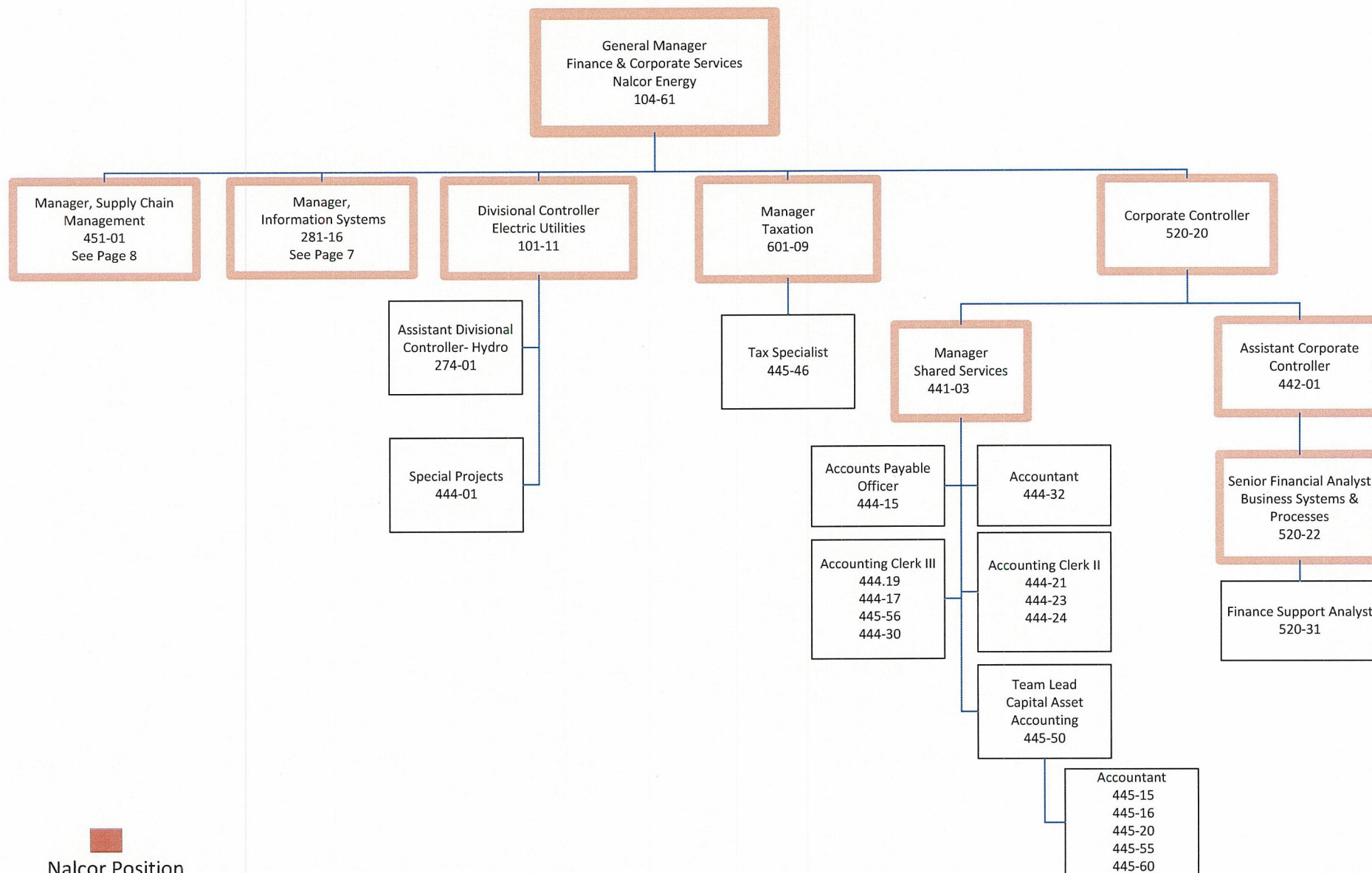
Human Resources & Organizational Effectiveness Division (HROE)



Finance Division 1 of 4
Finance/Controller

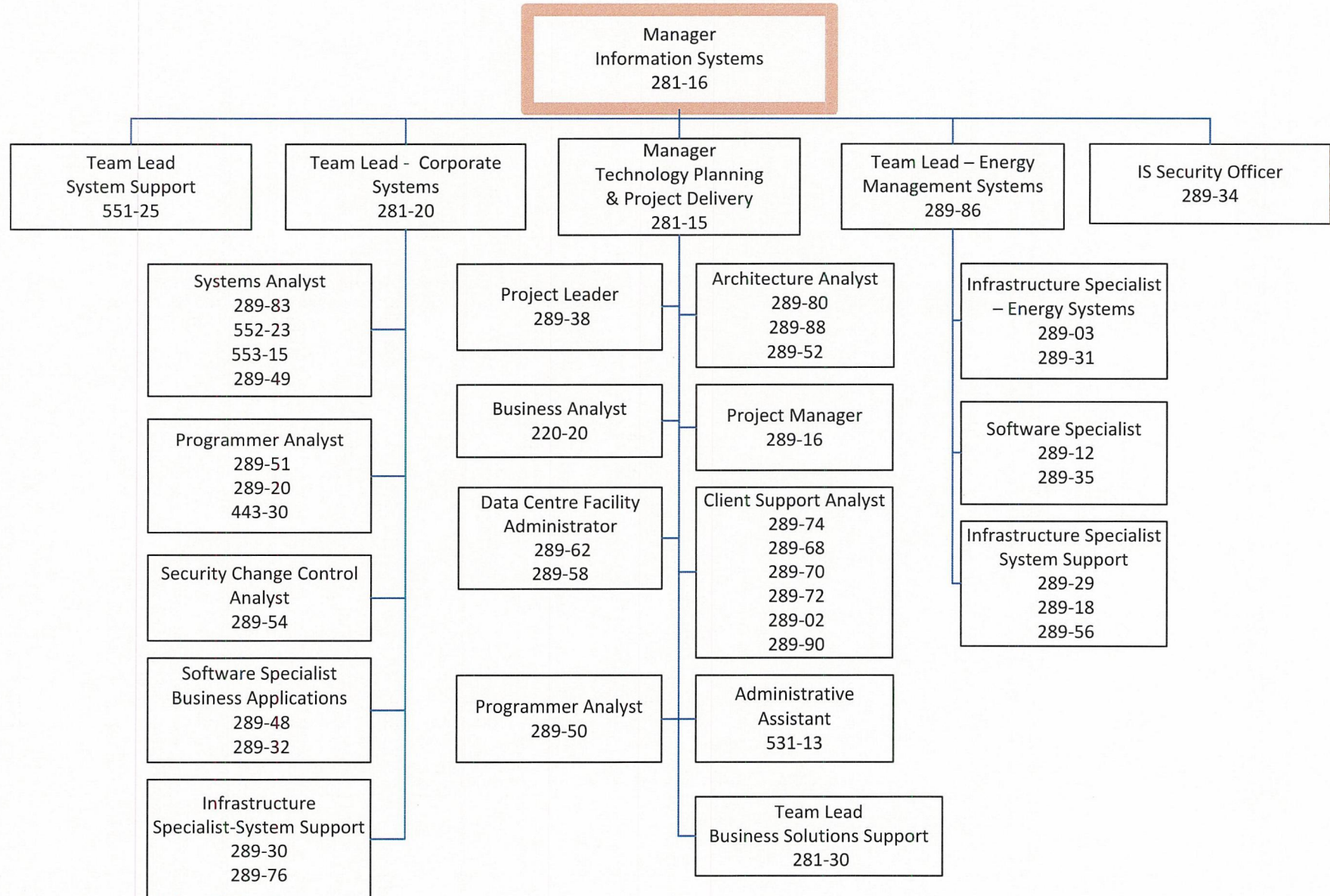


**Finance Division 2 of 4
Finance/Controller**

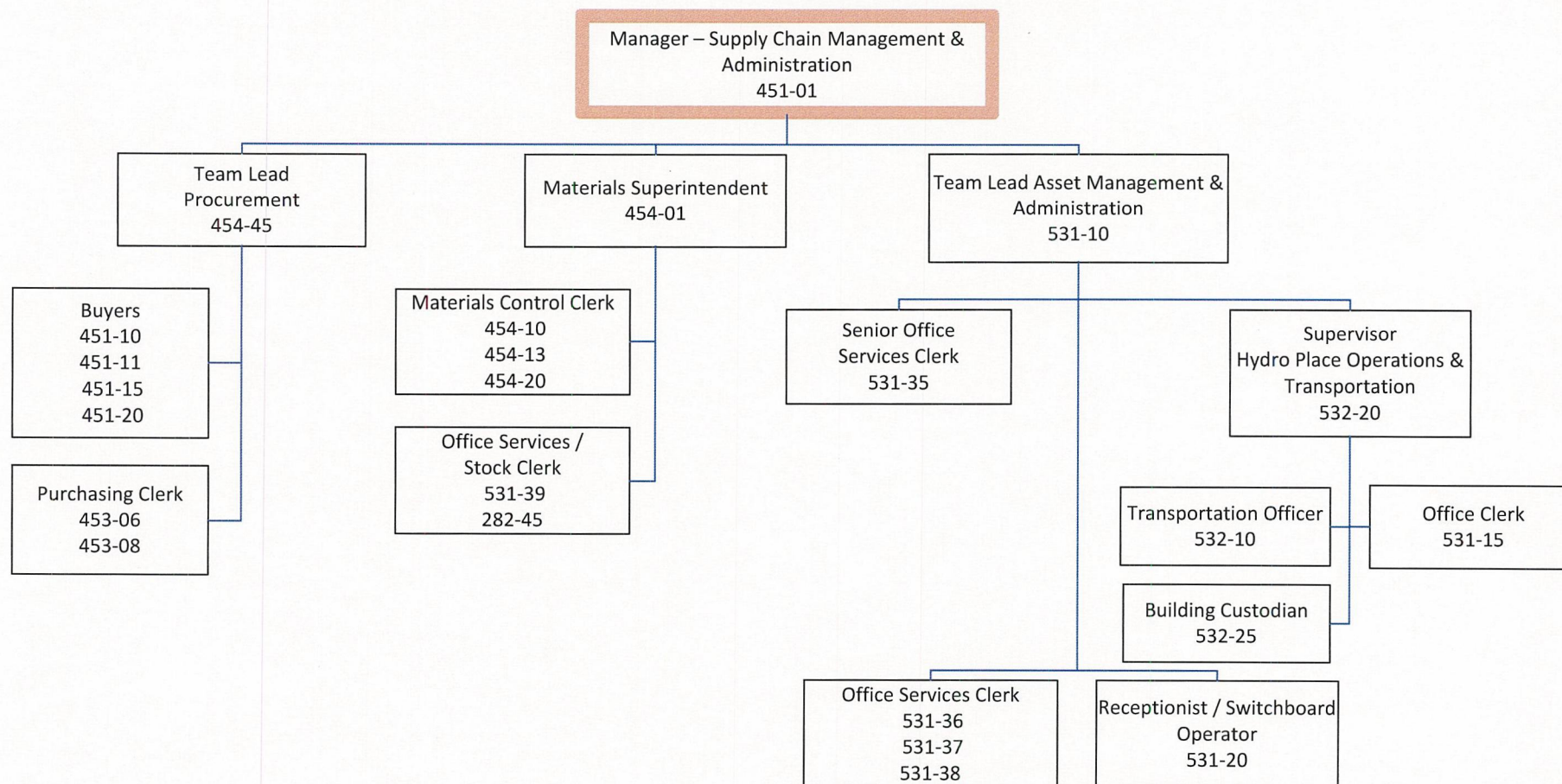


**Finance Division 3 of 4
Information Systems (IS)**

**PUB-NLH-138, Attachment 1,
Page 7 of 26, NLH 2013 GRA**

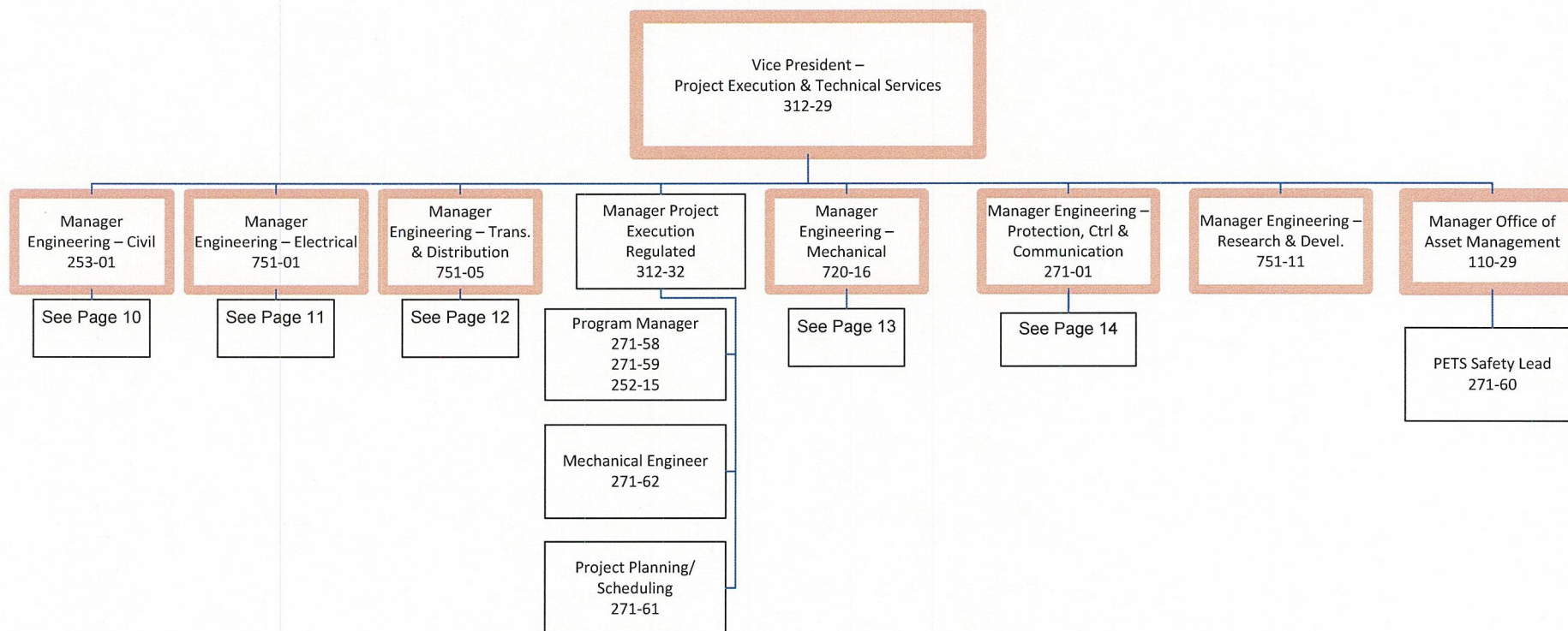


Finance – 4 of 4
Supply Chain Management



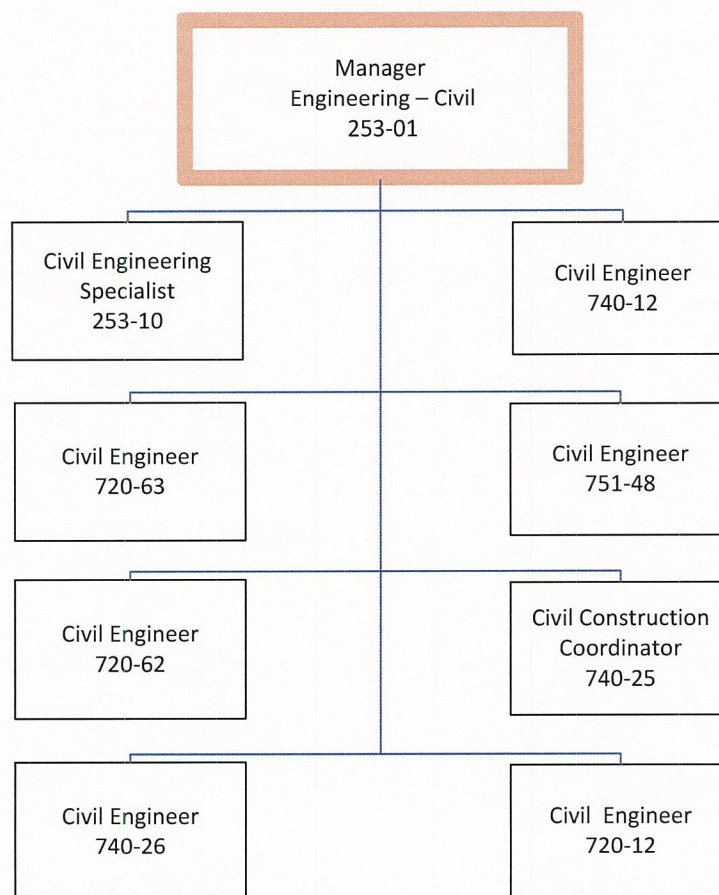
Project Execution & Technical Services (PETS)

1 of 6



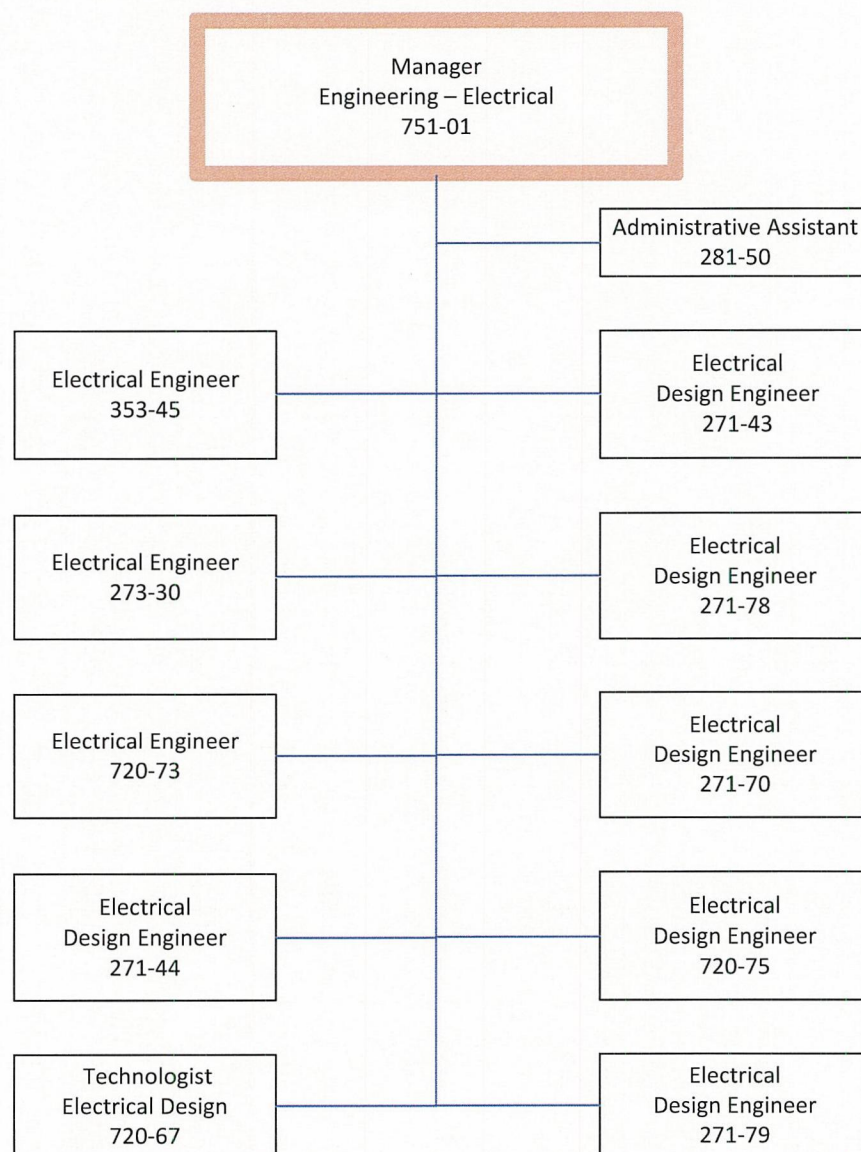
Project Execution & Technical Services

2 of 6 – Civil Engineering



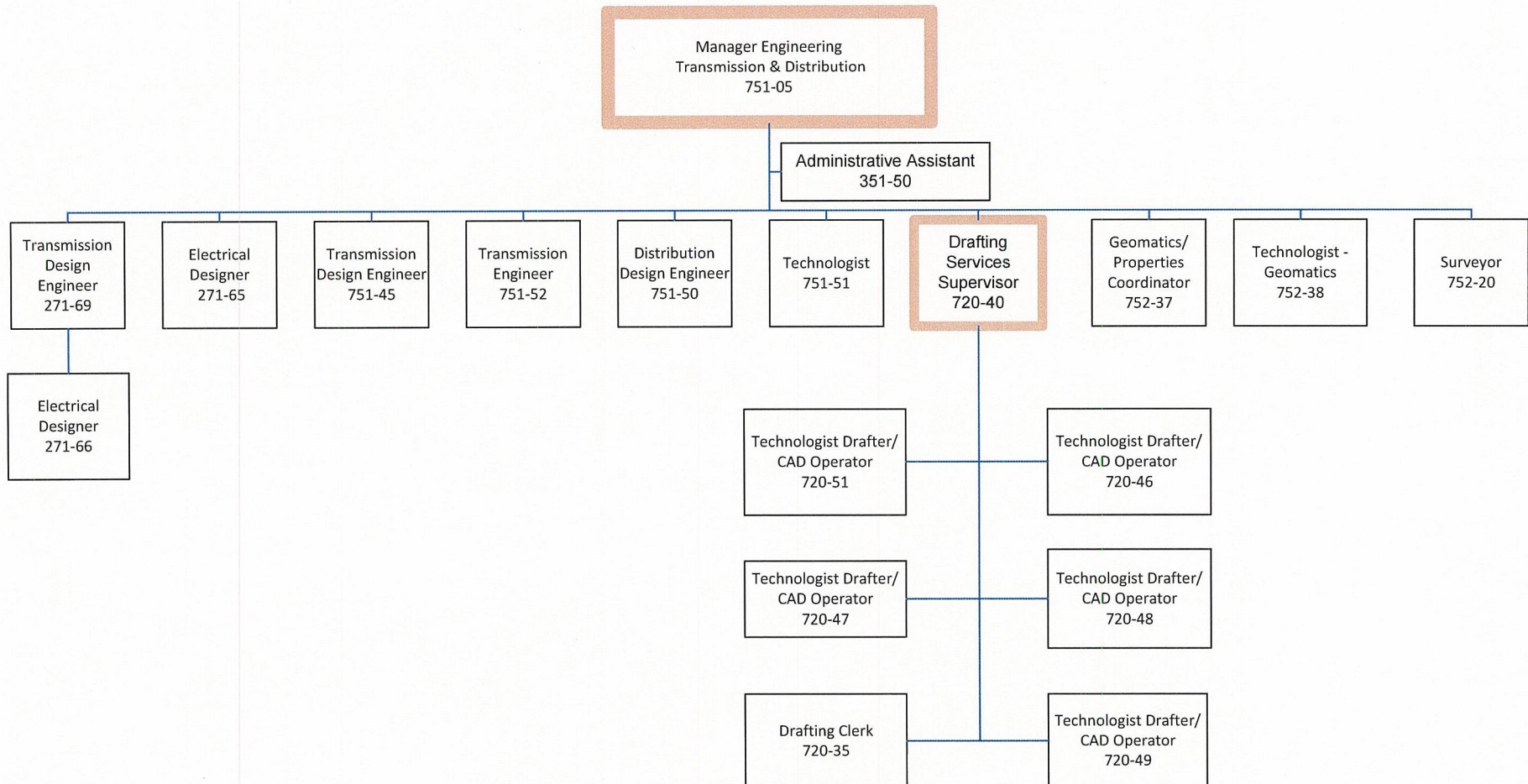
Project Execution & Technical Services

3 of 6 – Electrical Engineering



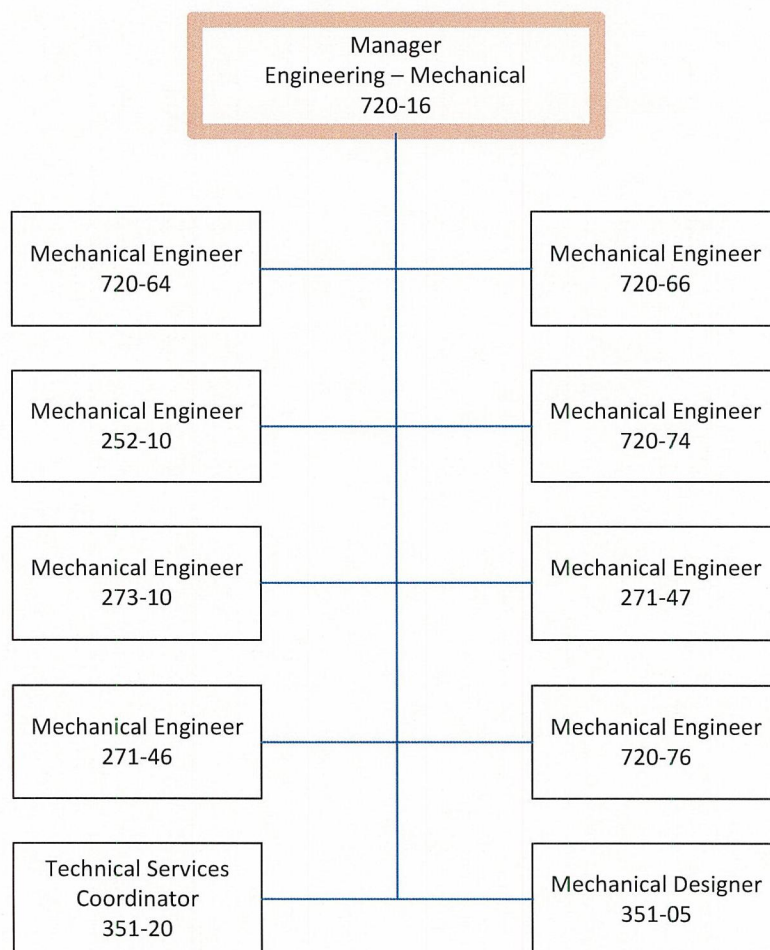
Project Execution & Technical Services

4 of 6 – Transmission & Distribution Engineering (T & D)



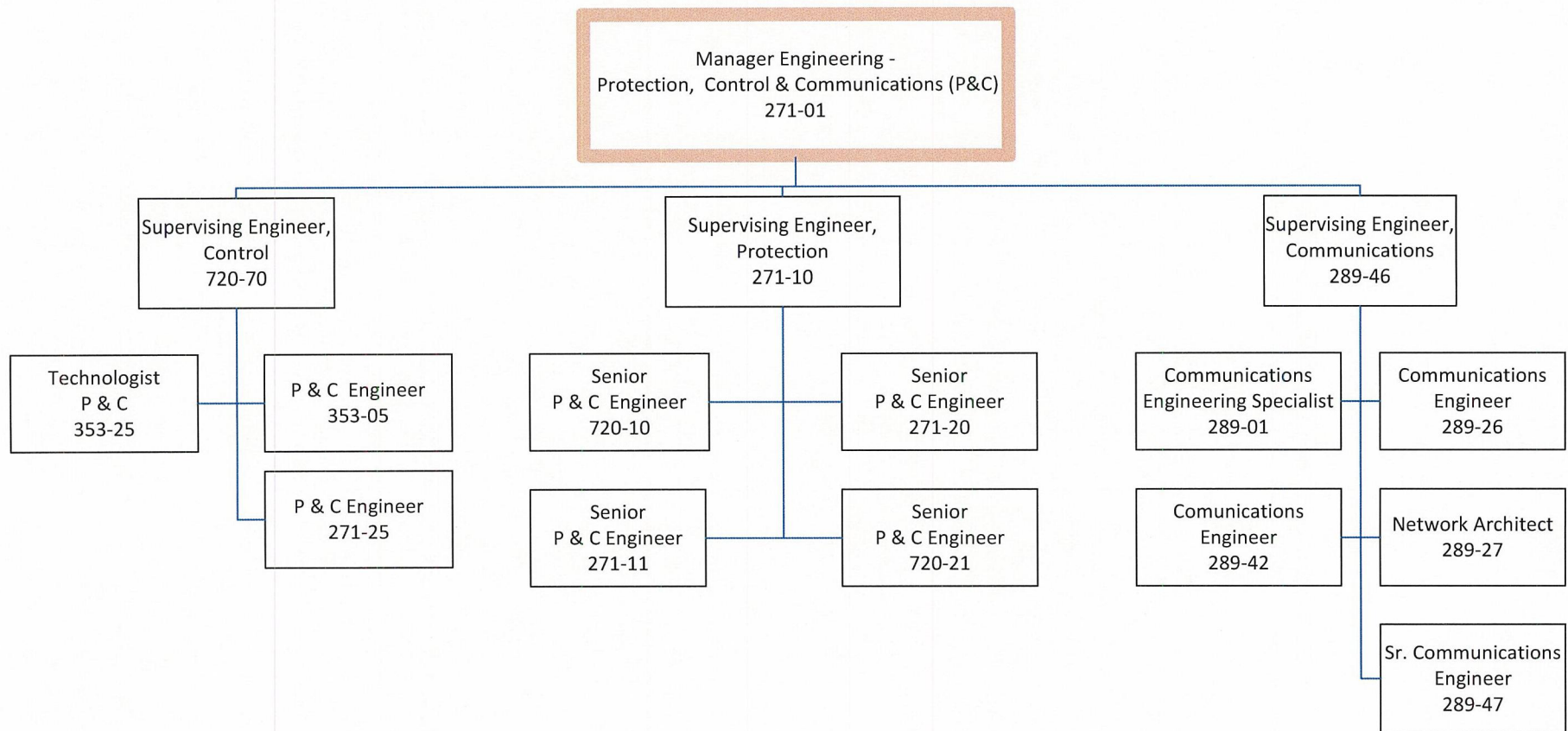
Project Execution & Technical Services

5 of 6 – Mechanical Engineering

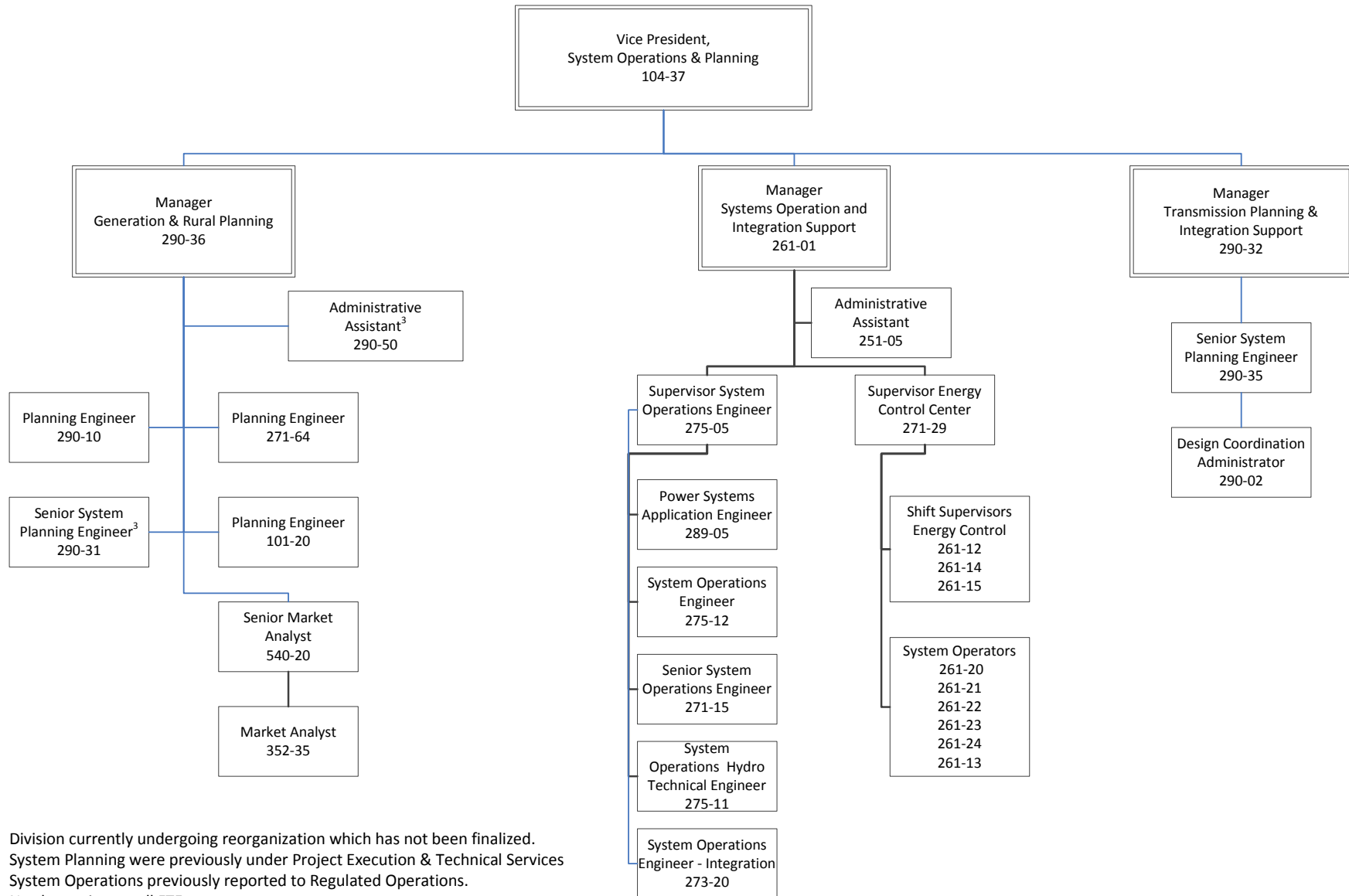


Project Execution & Technical Services

6 of 6 – Protection, Control & Communications Engineering



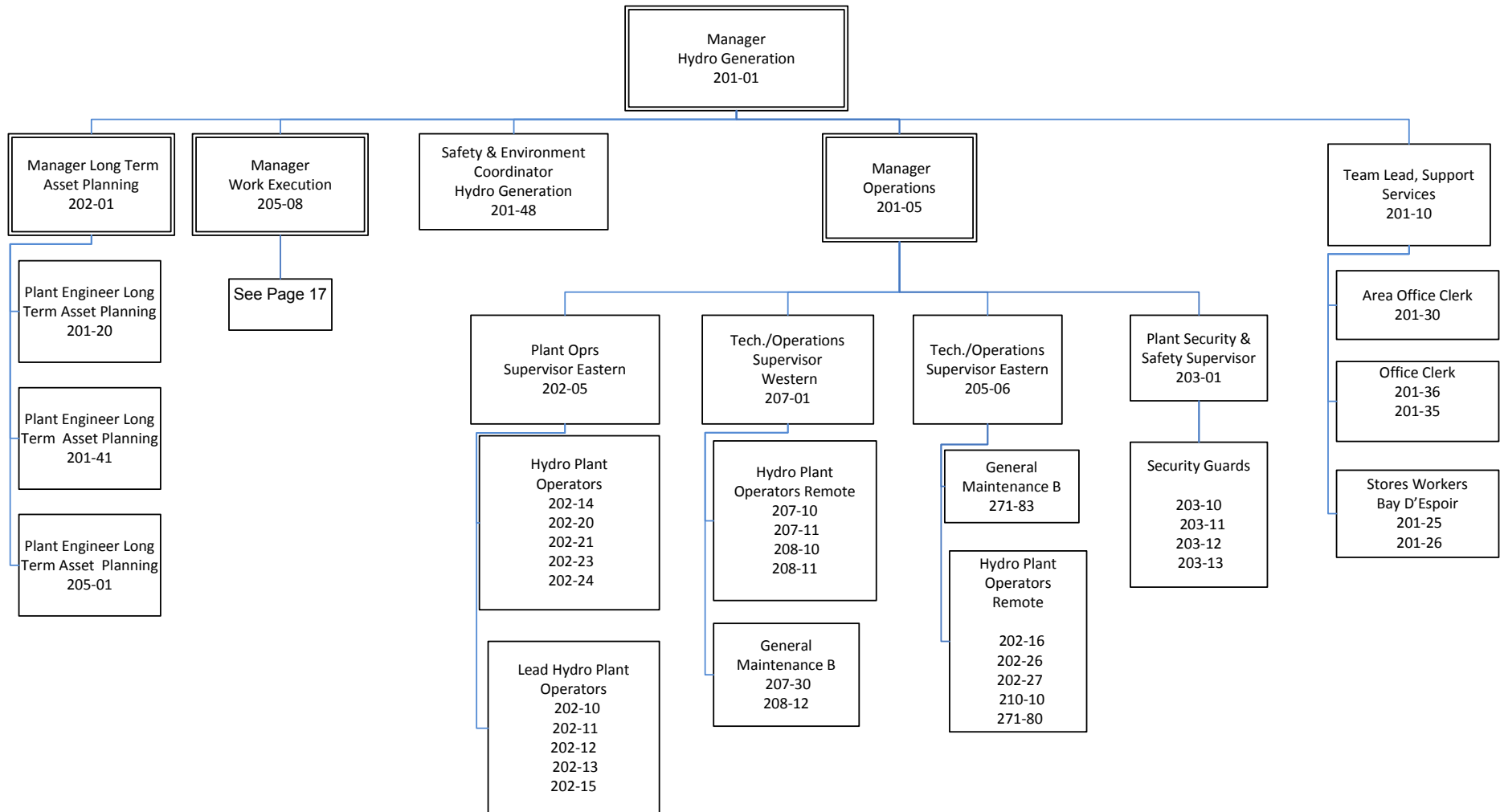
System Operations & Planning¹



1. Division currently undergoing reorganization which has not been finalized. System Planning were previously under Project Execution & Technical Services System Operations previously reported to Regulated Operations. No change in overall FTEs
2. New position being created. FTE reallocated from original, Manager, System Planning (structure pending)
3. Through reorganization position to be allocated in Project Execution and Technical Services

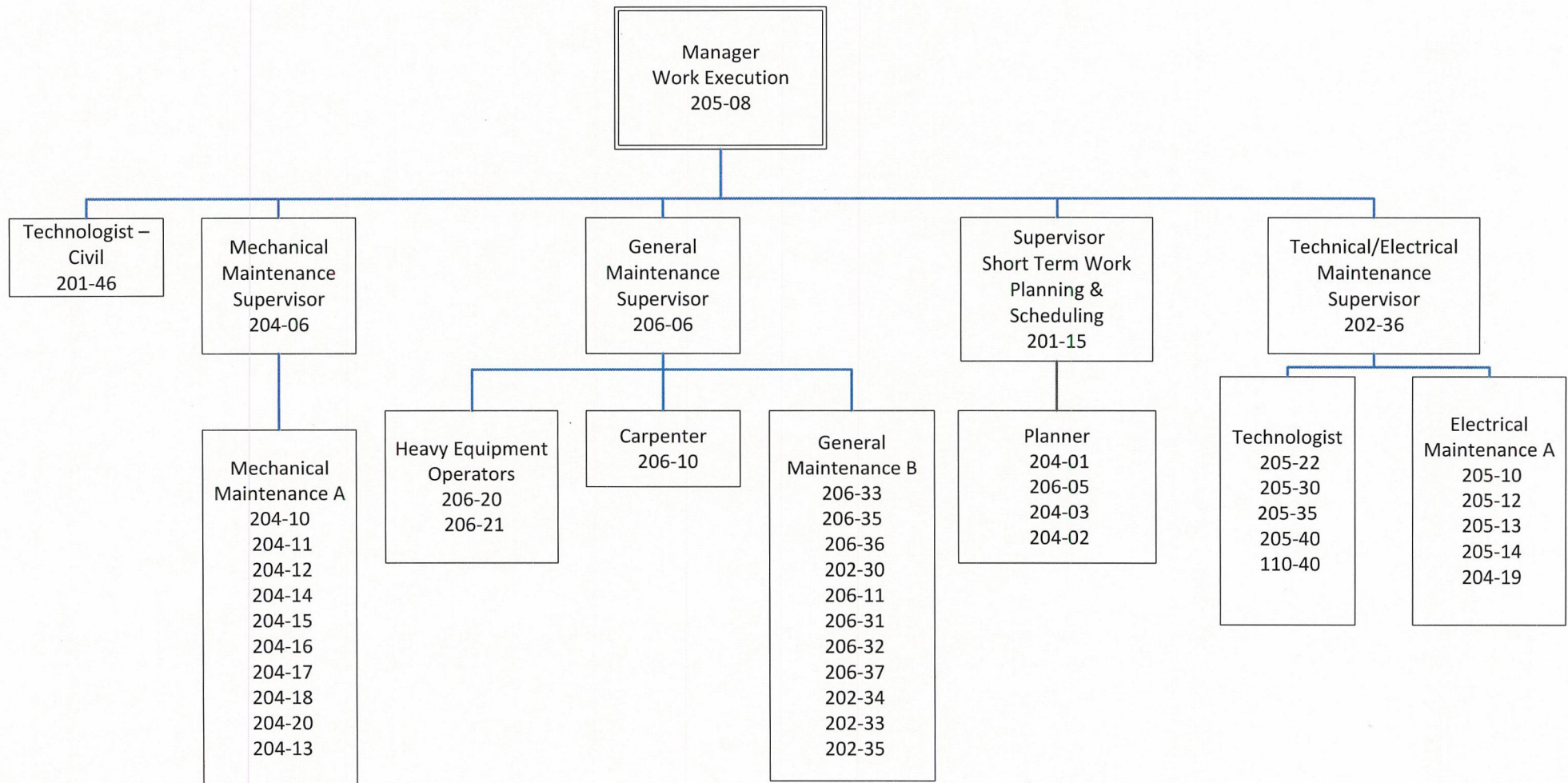
Regulated Operations

1 of 2 – Hydro Operations



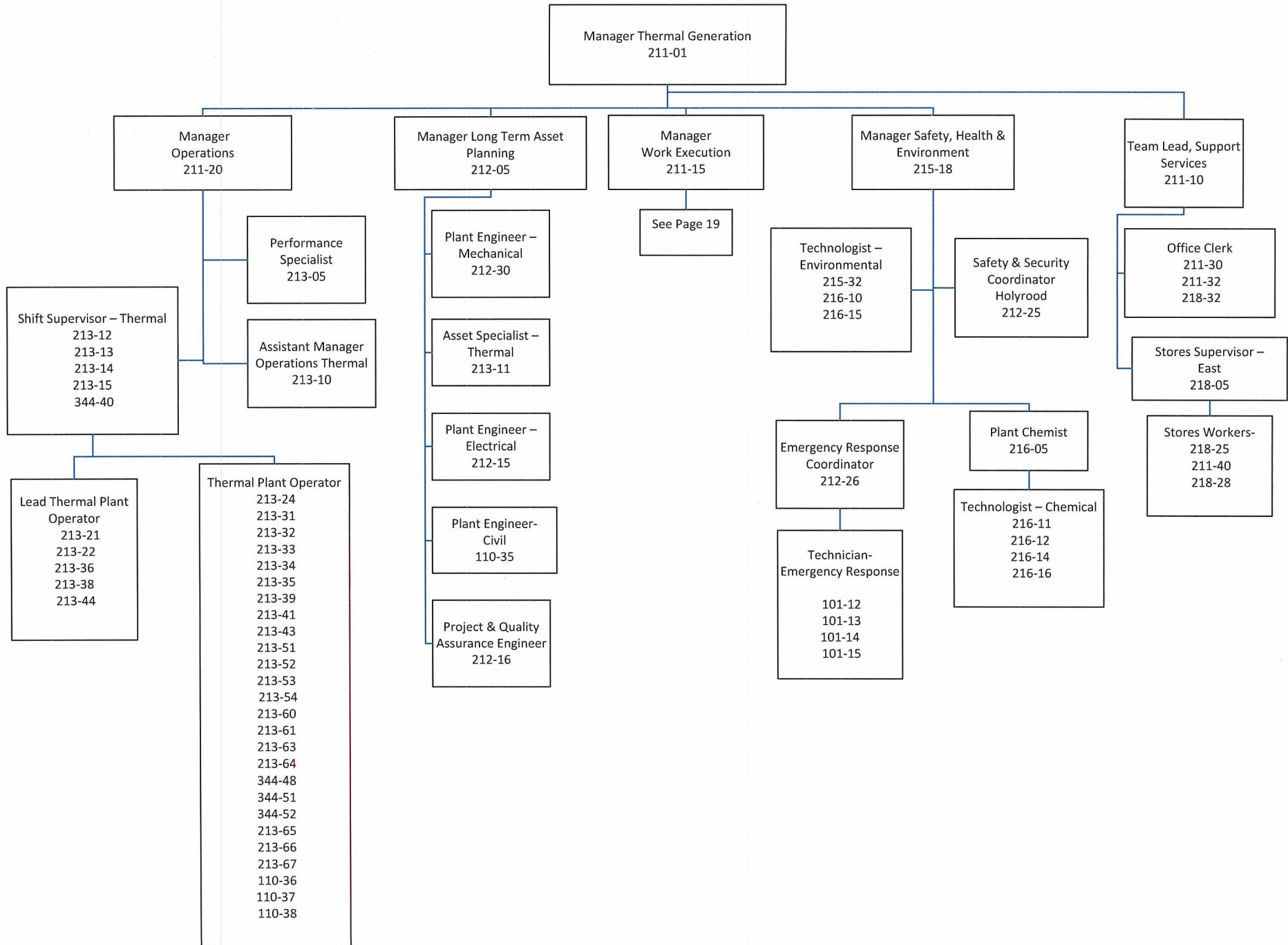
Regulated Operations

2 of 2 – Hydro Operations

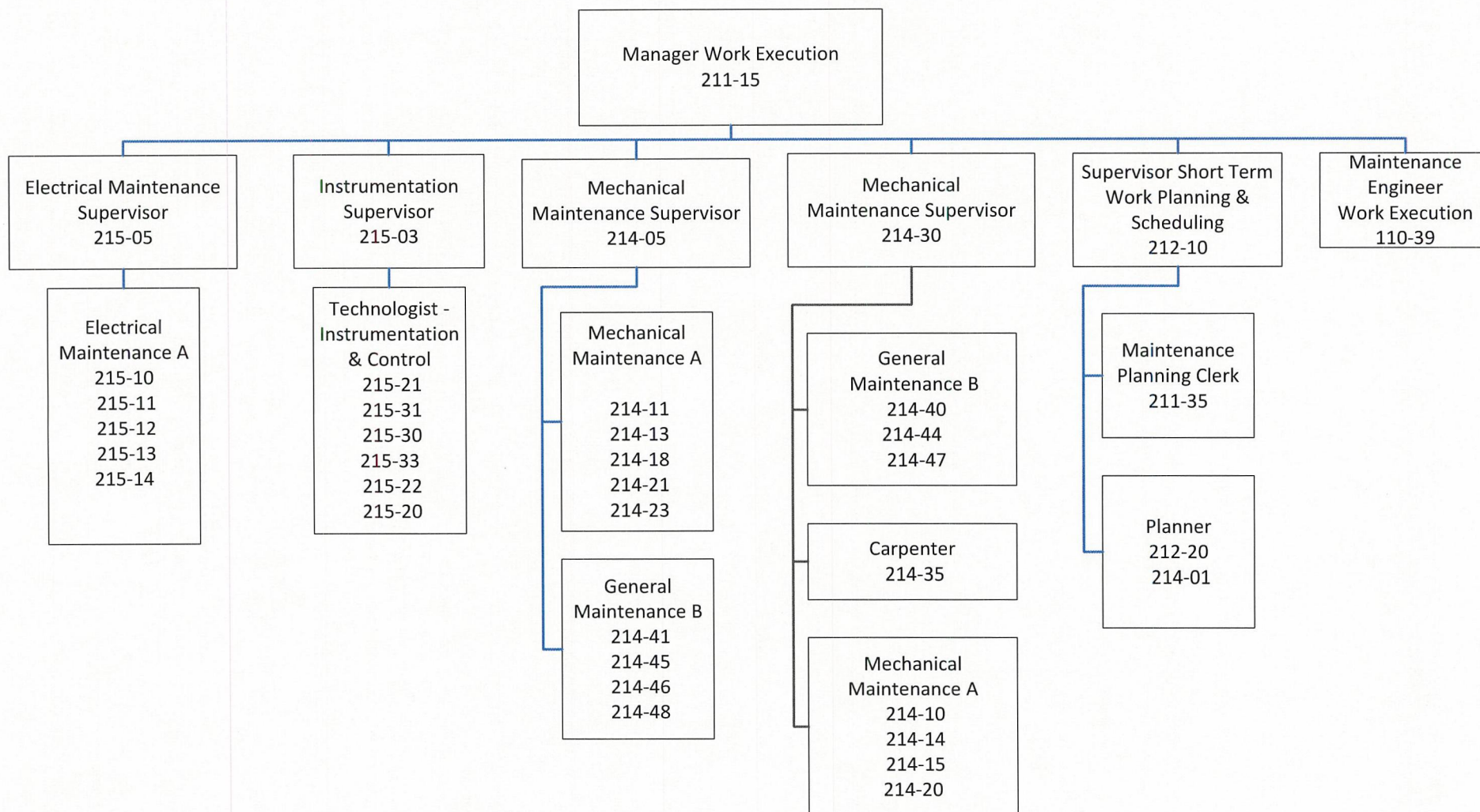


Generation Operations
1 of 2 – Thermal Plant Operations

PUB-NLH-138, Attachment 1,
Page 18 of 26, NLH 2013 GRA

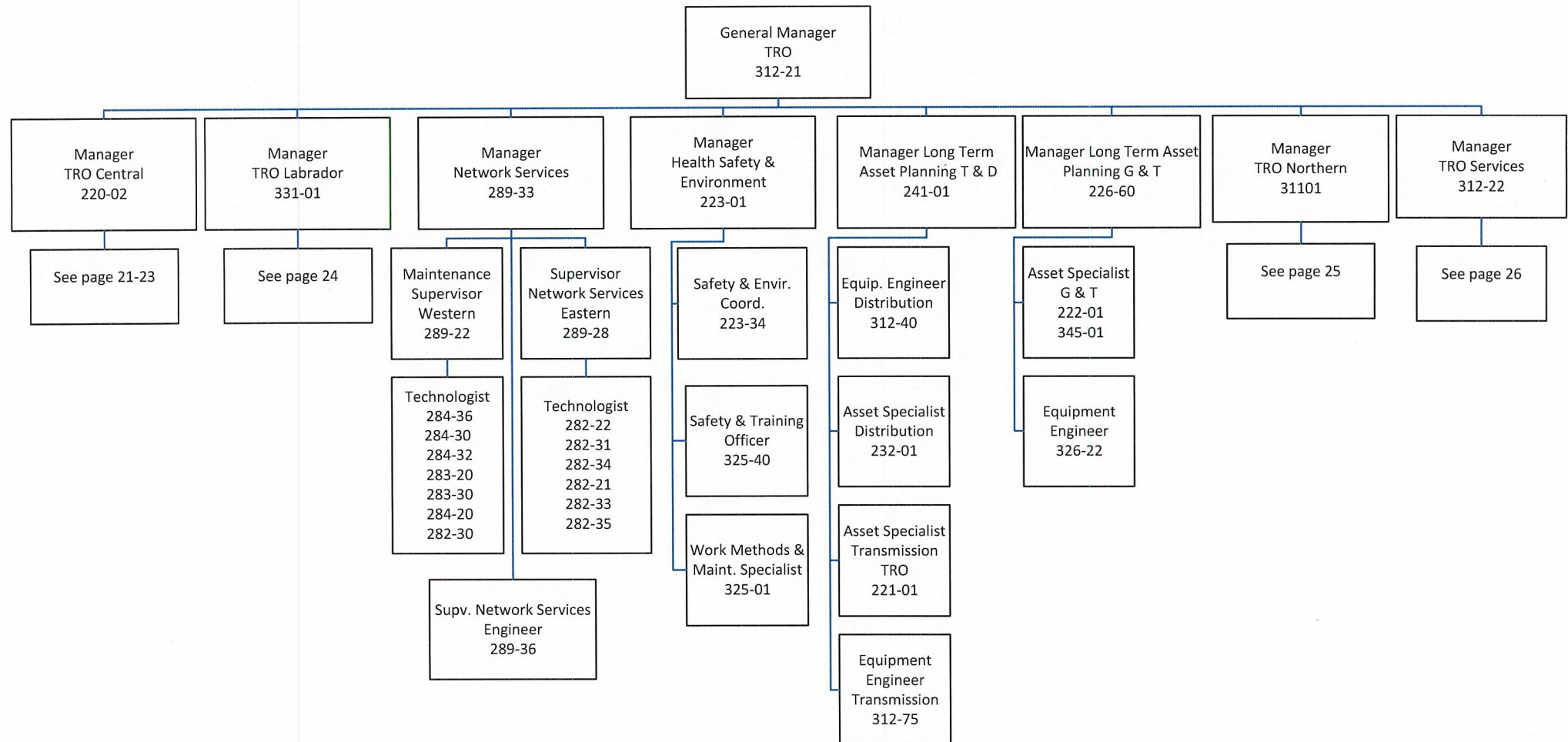


**Generation Operations
2 of 2 – Thermal Plant Operations**



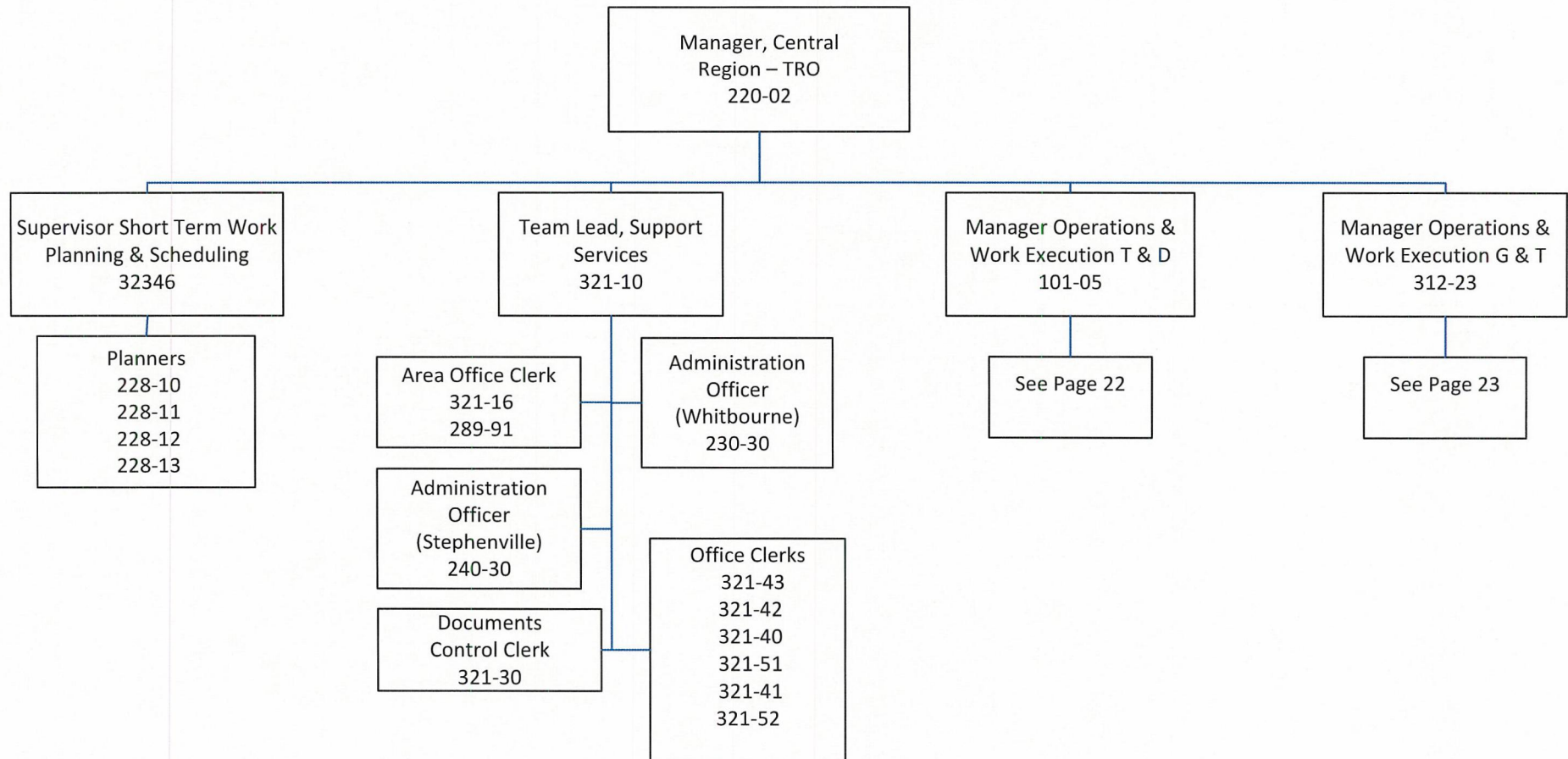
Transmission and Rural Operations (TRO)

1 of 7



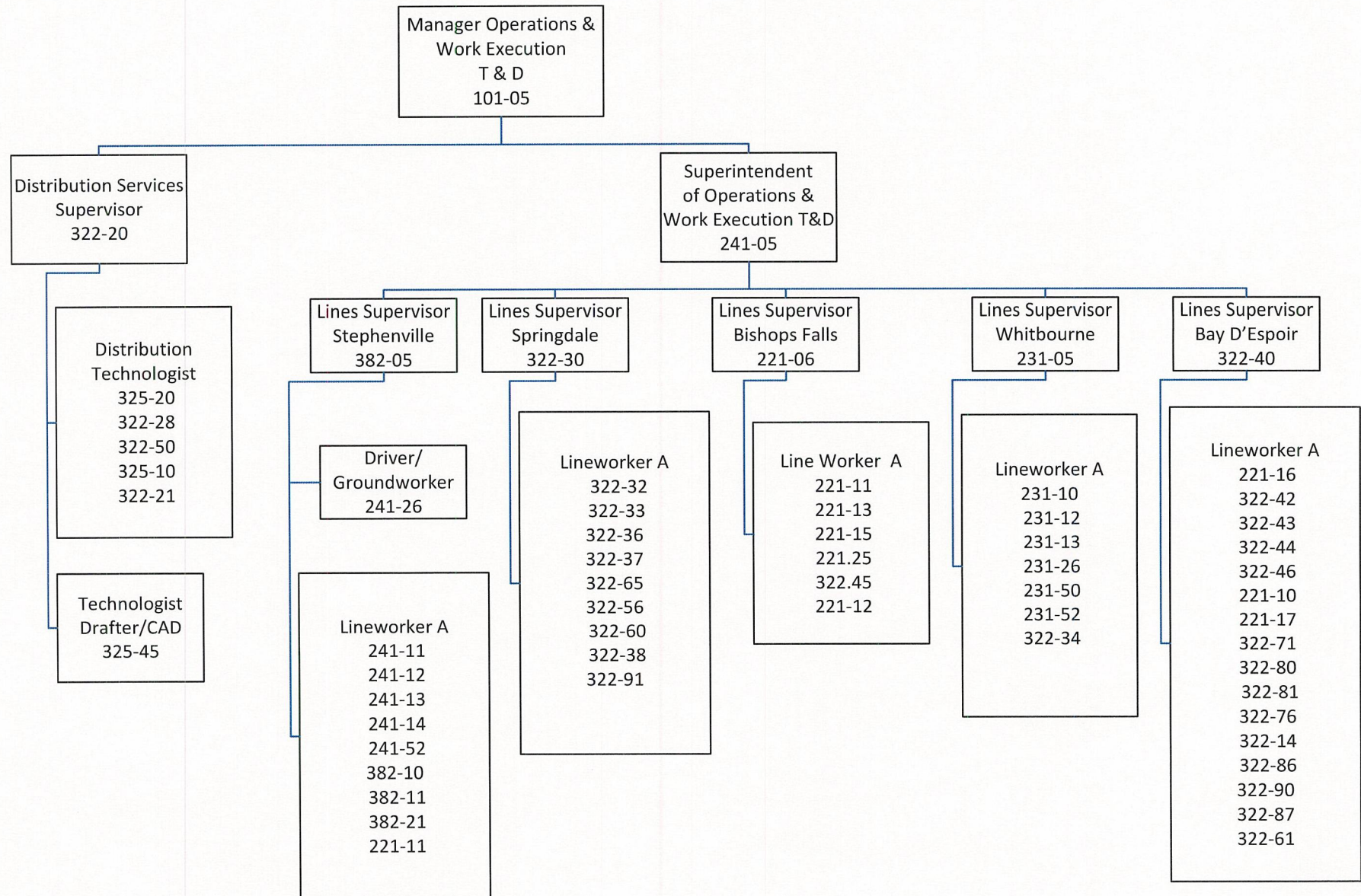
Transmission and Rural Operations

2 of 7 – Central Region



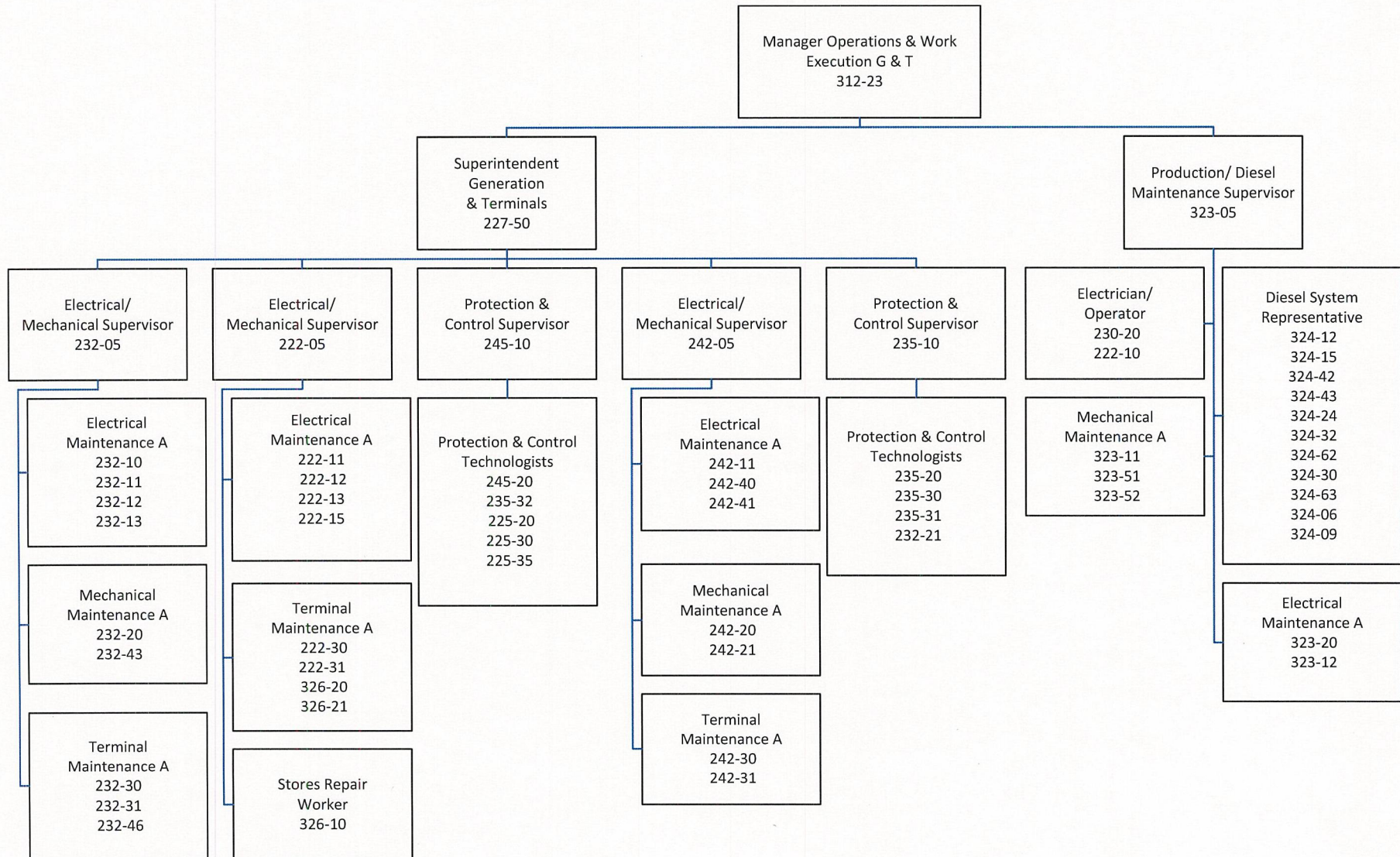
Transmission and Rural Operations

3 of 7 – Central Region



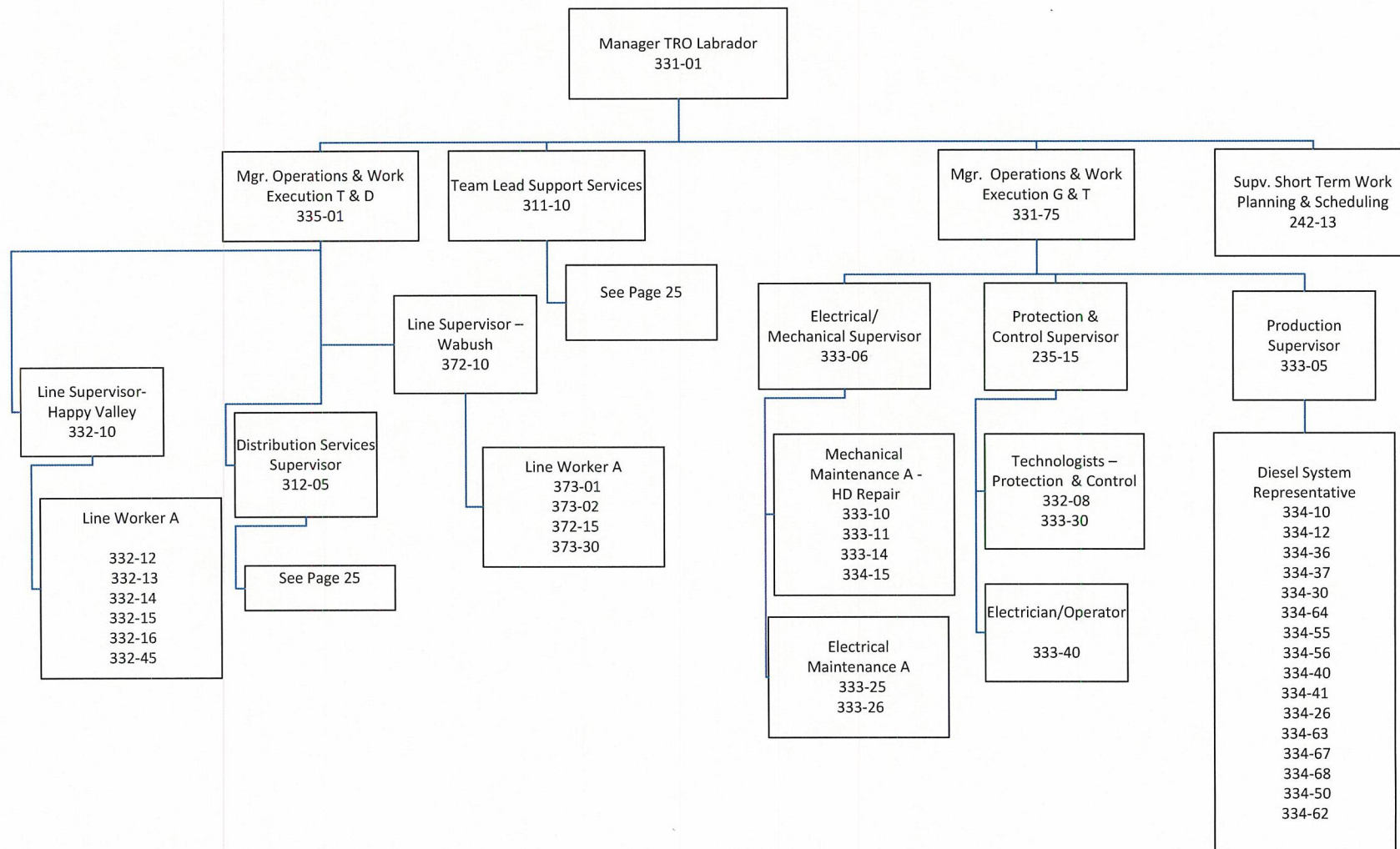
Transmission and Rural Operations

4 of 7 – Central Region



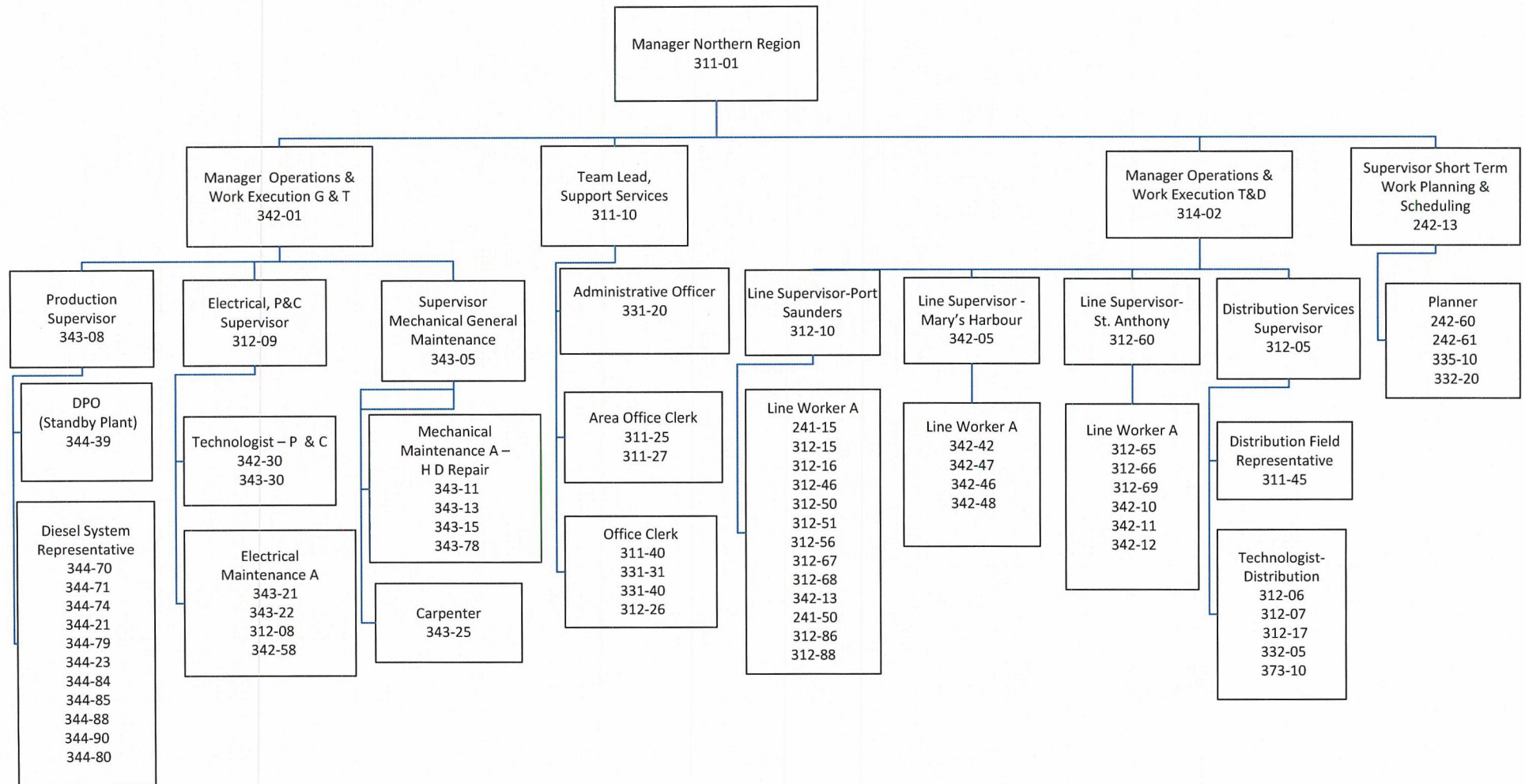
Transmission and Rural Operations

5 of 7 – Labrador Region



Transmission and Rural Operations

6 of 7 – Northern Region



Transmission and Rural Operations

7 of 7 – Support Services

